



New Providence Wharf

1 Fairmont Avenue, E14

Offers in excess of £1,500,000

A spectacular triple-aspect 15th floor 3 bedroom 3 bathroom penthouse apartment with exceptional river views & an enormous private river-facing roof terrace of approx. 3,000sq ft in the sought-after New Providence Wharf development. Valet parking for 2 cars is included & the property is offered chain-free.



New Providence Wharf

1 Fairmont Avenue, E14

- 15th floor 3 bedroom 3 bathroom penthouse apartment.
- Triple aspect with direct river views, & views towards Canary Wharf.
- Huge private roof terrace of approx. 3,000sq ft offering panoramic views.
- Exceptional residents' facilities on-site, inc: 24hr concierge; 25m pool & gym.
- Valet parking for 2 cars included.
- Offered chain-free.

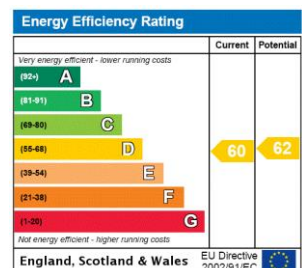


A spectacular 1900sq ft (including stores) triple-aspect 15th floor 3 bedroom 3 bathroom penthouse apartment with exceptional river views & an enormous river-facing roof terrace in the sought-after New Providence Wharf development. The apartment also benefits from views towards Canary Wharf, over the Poplar Marina & Blackwall Basin.

New Providence Wharf boasts excellent on-site facilities including 24 hour concierge & site security, a large & well-equipped residents' gym, 25 metre swimming pool, Jacuzzi pool, plus sauna/steam room. The development is located conveniently close to Blackwall DLR station for easy access to Canary Wharf & The City. The Elizabeth Line (formerly Crossrail) station at Canary Wharf, is situated approximately 800m away.

Valet parking is included for 2 vehicles & the property is offered chain free.

Tenure: Leasehold – 976 years remaining approx.
Service Charge: £16,971pa approx.
Ground Rent: £750pa
Local Authority: Tower Hamlets
Council Tax Band: H



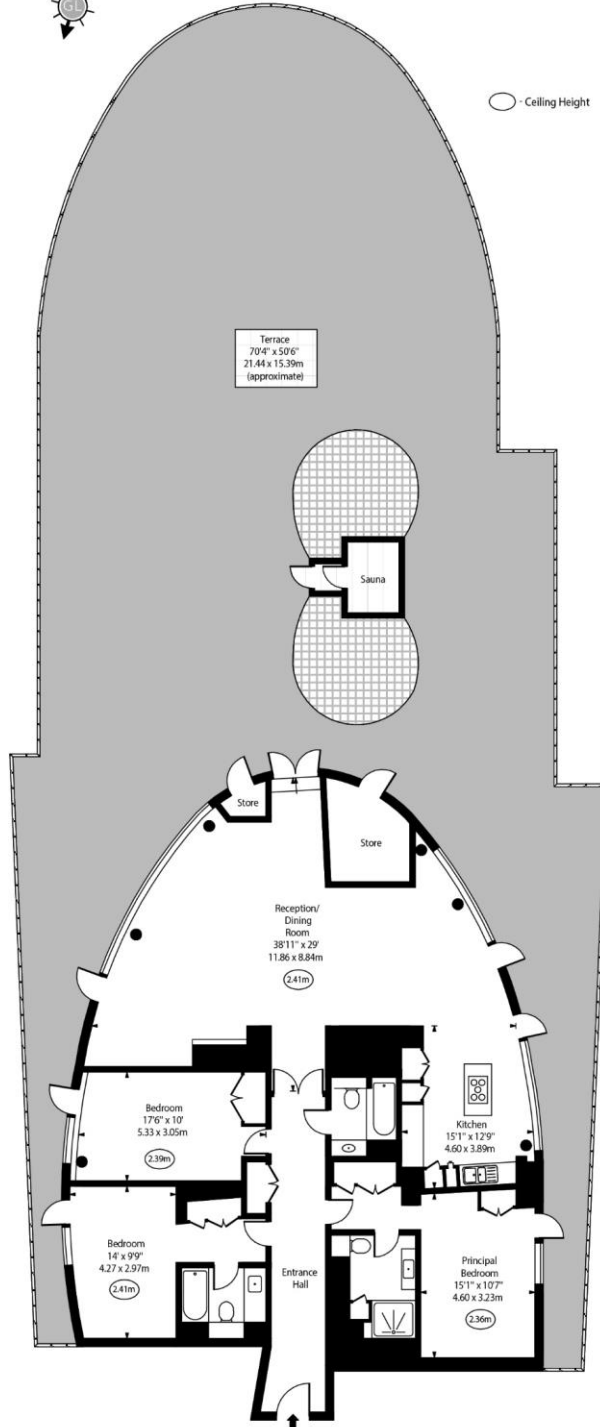
Chestertons Canary Wharf & Greenwich Sales

Harbour Island
 28 Harbour Exchange Square
 London
 E14 9GE
 canarywharf@chestertons.co.uk
 020 7510 8300
 chestertons.co.uk

New Providence Wharf,
Fairmont Avenue, E14



○ Ceiling Height



Fifteenth Floor

Approx Gross Internal Area 1815 Sq Ft - 168.61 Sq M
(Excluding Stores)

Approx Gross Internal Area 1900 Sq Ft - 176.51 Sq M
(Including Stores)

For Illustration Purposes Only - Not To Scale
www.goldlens.co.uk
Ref. No. 024684M

Chesterton Global Ltd trading as Chestertons for themselves and for the vendor of this property whose agents they are, give notice that (i) these particulars do not constitute any part of an offer or contract, (ii) all statements contained within these particulars are made without responsibility on the part of Chestertons or the vendor, (iii) whilst made in good faith, none of the statements contained within these particulars are to be relied upon as a statement or representation of fact, (iv) any intending purchasers must satisfy themselves by inspection or otherwise as to the correctness of each of the statements contained within these particulars, (v) the vendor does not make or give either Chestertons or any person in their employment any authority to make or give representation or warranty whatsoever in relation to this property. Wide angle lenses may be used. ©Copyright Chestertons | Chesterton Global Ltd | Registered Office 40 Connaught Street, Hyde Park, London W2 2AB Registered Company Number 05334580.



This paper is
100% recyclable