



Westferry Road

London, E14

Asking Price £500,000

Two bedroom-terraced house situated on Westferry Road. The property comes with a parking space and is chain free.



Westferry Road

London, E14

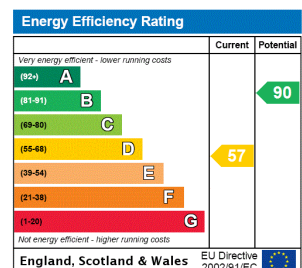
- Two bedroom terrace house
- Private garden
- Two double bedrooms
- Open plan kitchen & living room
- Allocated parking space to rear
- Chain free



Two bedroom-terraced house situated on Westferry Road on the Isle of Dogs. This freehold property comprises of an open plan kitchen and living room, two double bedrooms and a family bathroom. The property also benefits from a private rear garden, front garden and allocated parking space.

The closest DLR station is Mudchute, which is approximately 0.5 miles away. There is a regular bus service that gives swift access to Canary Wharf.

Tenure: Freehold
Service Charge: £381 approx.
Ground Rent: £0
Local Authority:
Council Tax Band:



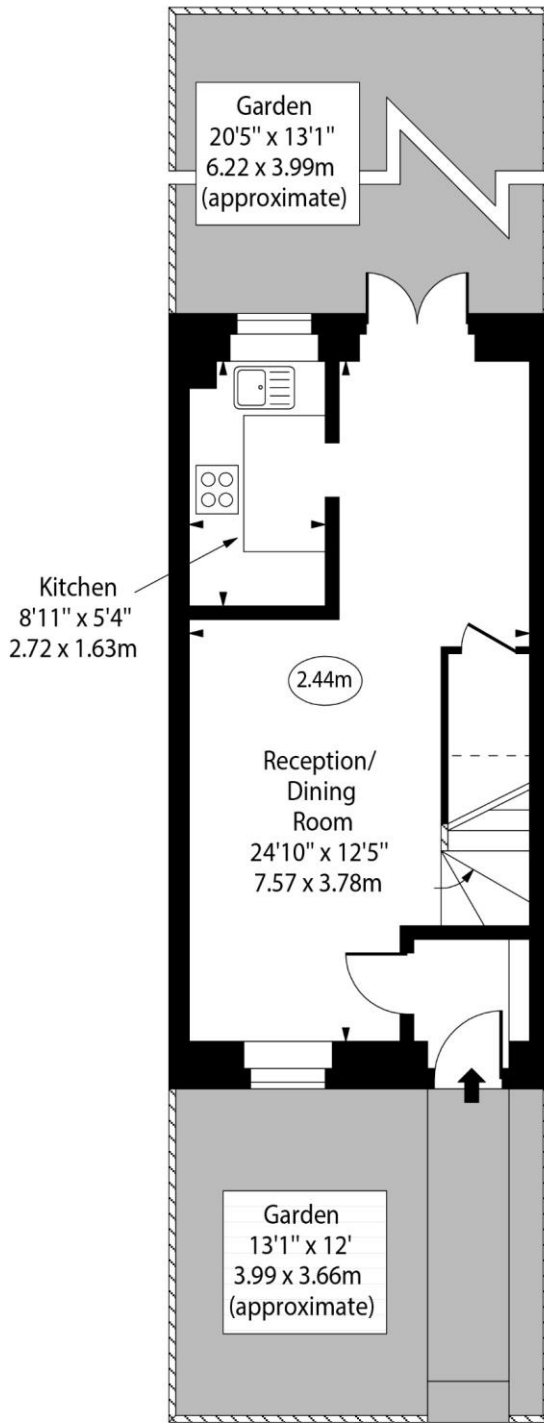
Chestertons Canary Wharf & Greenwich Sales

Harbour Island
 28 Harbour Exchange Square
 London
 E14 9GE
 canarywharf@chestertons.co.uk
 020 7510 8300
 chestertons.co.uk

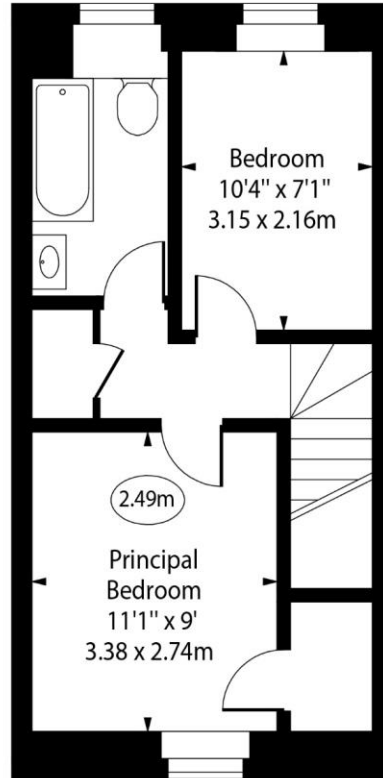
Westferry Road, E14



○ - Ceiling Height



Ground Floor



First Floor

Approx Gross Internal Area

635 Sq Ft - 58.99 Sq M

For Illustration Purposes Only - Not To Scale

www.goldlens.co.uk

Ref. No. 024583K

