



Birchfield Street

London, E14

Offers in excess of £700,000

This spacious, top-floor, two bedroom warehouse conversion boasts high vaulted ceilings with two mezzanine levels and a delightful west-facing private terrace. The apartment comes with an off street parking space.



Birchfield Street

London, E14

- Two bedroom split level apartment with two mezzanine levels
- Vaulted ceilings
- Two bathrooms
- Large private roof terrace
- Secure off street parking
- Close to Westferry DLR station
- Close to Canary Wharf
- Service charge £3291 approx
- Ground Rent £200
- Leasehold 100 years



This spacious top-floor two-bedroom warehouse conversion boasts a delightful west-facing private terrace. The accommodation is arranged over two floors and can be used in a variety of ways. The principle living area comprises an open-plan kitchen-dining area, with the reception space opening out onto a private roof terrace. The two principle bedrooms rooms have vaulted ceilings and one has a staircase leading to a mezzanine level, which could be used as an office/ study. The family bathroom is located off the main hallway. A staircase gives access to the second floor with a further mezzanine level, which could be used as a third bedroom/ study and has access to a shower room.

The property is a short walk away from Canary Wharf, Elizabeth Line and Westferry DLR station is moments away with direct links to the City, City Airport, Greenwich and Stratford.

Tenure: Leasehold 100 years 5 months

Service Charge: £3291 approx.

Ground Rent: £200 such sum to increase by £200 on every 25th anniversary of the Commencement Date

Council Tax Band: D

Local Authority: Tower Hamlets

Energy Efficiency Rating		Current	Potential
Very energy efficient - lower running costs			
(92-100)	A		
(81-91)	B		
(69-80)	C	70	70
(55-68)	D		
(39-54)	E		
(21-38)	F		
(1-20)	G		
Not energy efficient - higher running costs			
England, Scotland & Wales		EU Directive 2002/91/EC	

Chestertons Canary Wharf & Greenwich Sales

Harbour Island

28 Harbour Exchange Square

London

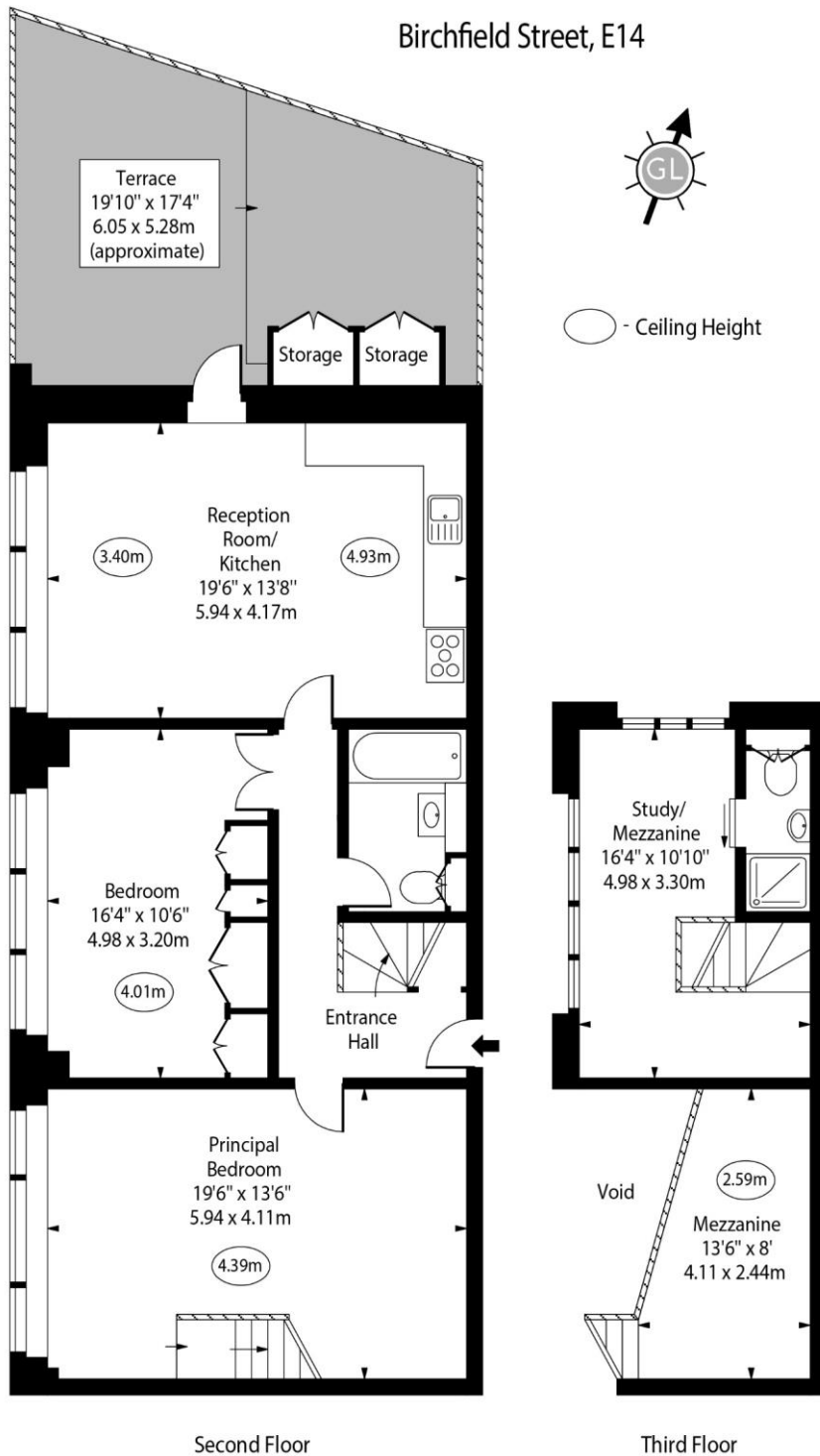
E14 9GE

canarywharf@chestertons.co.uk

020 7510 8300

chestertons.co.uk

Birchfield Street, E14



Second Floor

Third Floor

Approx Gross Internal Area 1144 Sq Ft - 106.28 Sq M
(Excluding Void & Storage)

For Illustration Purposes Only - Not To Scale
www.goldlens.co.uk
Ref. No. 024546K