



Discovery Dock Apartments East

3 South Quay Square, E14

Asking Price £1,100,000

The apartment boasts three double bedrooms, two limestone bathrooms, integrated kitchen & open-plan reception over-looking the docks. With wood flooring, under-floor heating, modern furnishings and appliances & floor to ceiling windows throughout.



Discovery Dock Apartments East

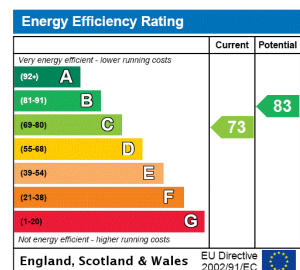
3 South Quay Square, E14

- Spacious 3 bedroom apartment in Discovery Dock East
- Circa 1165 sq ft of internal space
- Private balcony with dock views
- Two bathrooms
- Residents gym and swimming pool
- 24 hour concierge
- Parking space



A luxury three bedroom apartment to in Discovery Dock Apartments, E14 - a secure dockside development with 24 hour concierge, residents' gym and swimming pool on-site, located just a three minute walk from the centre of Canary Wharf and within a 20 minute commute of Bank. The apartment boasts approx. 1,100 square feet of living space, with three large double bedrooms, two limestone bathrooms, designer integrated kitchen and huge open-plan reception over-looking the docks and Canary Wharf. With wood flooring, under-floor heating, modern furnishings and appliances and floor to ceiling windows throughout.

- Tenure:** Leasehold – 976 years remaining approx.
Service Charge: £10,850 pa approx.
Ground Rent: £350pa increasing to £700pa for the next 25 years of the term increasing to £1,400pa for the next 25 years of the term increasing thereafter to £2,400pa for the remainder of the term
Local Authority: Tower Hamlets
Council Tax Band: F

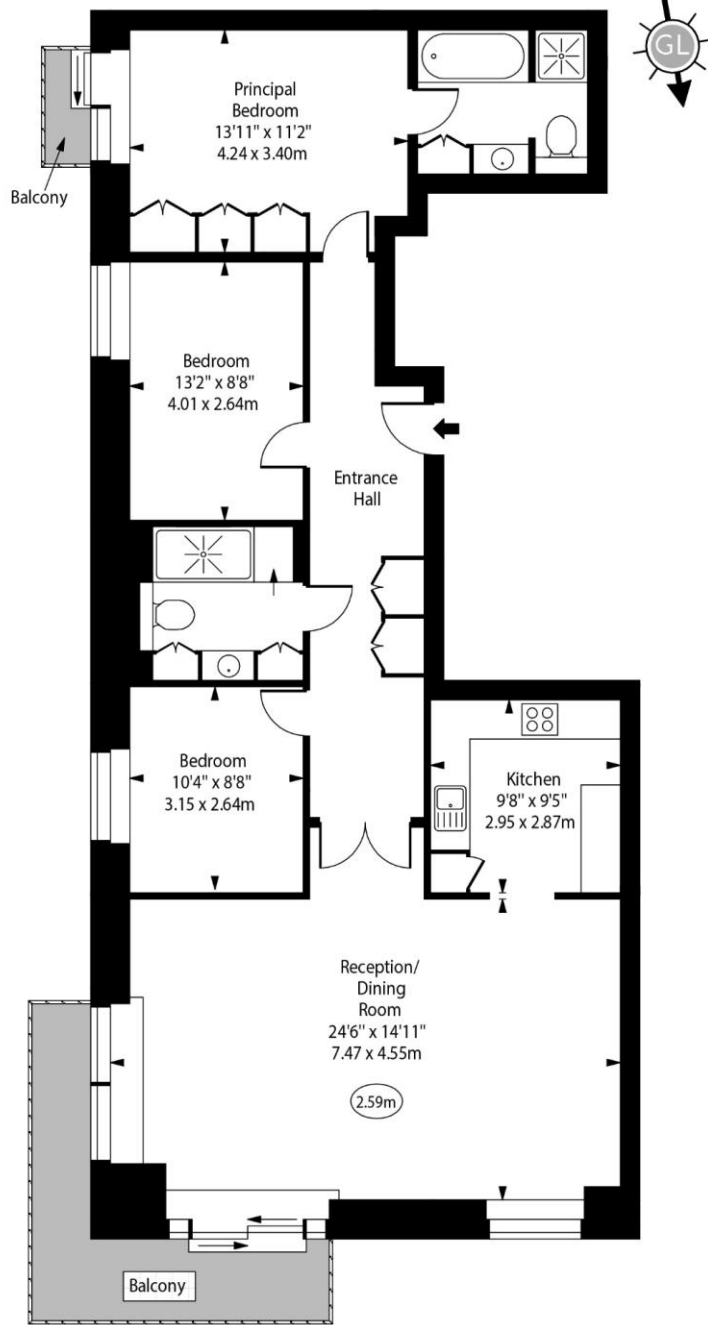


Chestertons Canary Wharf & Greenwich Sales

Harbour Island
 28 Harbour Exchange Square
 London
 E14 9GE
 canarywharf@chestertons.co.uk
 020 7510 8300
 chestertons.co.uk

Discovery Dock Apartments East,
South Quay Square, E14

○ - Ceiling Height



Fourth Floor

Approx Gross Internal Area 1168 Sq Ft - 108.50 Sq M

For Illustration Purposes Only - Not To Scale
www.goldlens.co.uk
Ref. No. 024431K

