



Ironmongers Place

London, E14

Asking Price £700,000

This wonderful 3 bedroom terraced freehold townhouse is located in Ironmongers Place, a quiet residential development, located close to Mudchute DLR station.



Ironmongers Place

London, E14

- 3 bedroom terraced house in Ironmongers Place
- 2 bathrooms
- Recently refurbished
- Small integral garage useful for storage and bikes
- Off-street parking
- Patio garden



A 3 bedroom terraced freehold townhouse in Ironmongers Place in the Isle of Dogs. Ironmongers Place is a quiet, residential development, located close to Mudchute DLR station and is a popular location for families.

The house has recently been refurbished and benefits from a new integrated kitchen leading to a bright reception room. There are 3 bedrooms and 2 bathrooms. The garage has been shortened to accommodate the second bathroom but still serves as a useful storage space.

Tenure: Freehold
Service Charge: £952 approx.
Ground Rent: £0 N/A
Local Authority: Tower Hamlets
Council Tax Band: D

Energy Efficiency Rating		Current	Potential
Very energy efficient - lower running costs			
(92-100)	A		
(81-91)	B		84
(69-80)	C	71	
(55-68)	D		
(39-54)	E		
(21-38)	F		
(1-20)	G		
Not energy efficient - higher running costs			
England, Scotland & Wales		EU Directive 2002/91/EC	

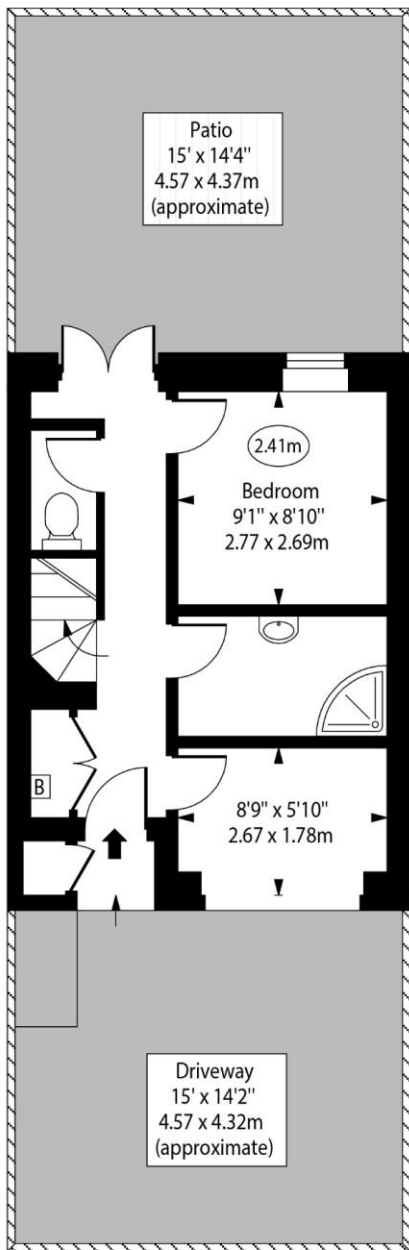
Chestertons Canary Wharf & Greenwich Sales

Harbour Island
 28 Harbour Exchange Square
 London
 E14 9GE
 canarywharf@chestertons.co.uk
 020 7510 8300
 chestertons.co.uk

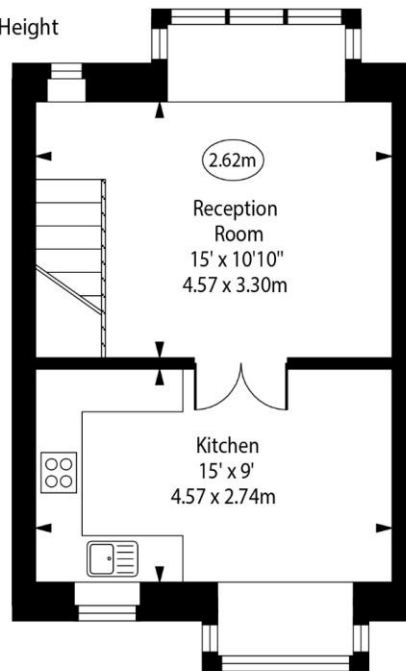
Ironmongers Place, E14



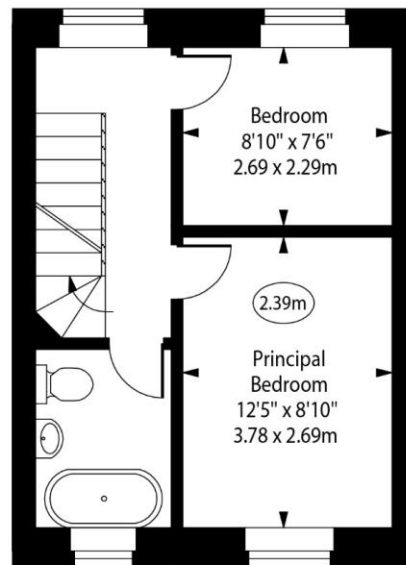
○ - Ceiling Height



Ground Floor



Second Floor



First Floor

Approx Gross Internal Area 912 Sq Ft - 84.72 Sq M

For Illustration Purposes Only - Not To Scale

www.goldlens.co.uk

Ref. No. 024480K

Chesterton Global Ltd trading as Chestertons for themselves and for the vendor of this property whose agents they are, give notice that (i) these particulars do not constitute any part of an offer or contract, (ii) all statements contained within these particulars are made without responsibility on the part of Chestertons or the vendor, (iii) whilst made in good faith, none of the statements contained within these particulars are to be relied upon as a statement or representation of fact, (iv) any intending purchasers must satisfy themselves by inspection or otherwise as to the correctness of each of the statements contained within these particulars, (v) the vendor does not make or give either Chestertons or any person in their employment any authority to make or give representation or warranty whatsoever in relation to this property. Wide angle lenses may be used. ©Copyright Chestertons | Chesterton Global Ltd | Registered Office 40 Connaught Street, Hyde Park, London W2 2AB Registered Company Number 05334580.



This paper is 100% recyclable