



Horizons Tower

1 Yabsley Street, E14

Offers in excess of £400,000

Located in Horizons Tower this charming 1 bedroom apartment offers a good sized kitchen and separate reception room. The bedroom is spacious and leads to private South facing balcony. Canary Wharf is easily accessible by walking, bus or DLR.



Horizons Tower

1 Yabsley Street, E14

- Bright 1 bedroom apartment in Horizons Tower
- Located on the 3rd floor
- Spacious bedroom with built in wardrobe
- Separate kitchen with dining area
- Lift access
- Concierge service
- Private south facing balcony
- Access to residents gym
- Playground area



This impressive 1 bedroom apartment in Horizon Tower is located on the 3rd floor, with a private south facing balcony. Residents have use of a gym and concierge services.

The apartment comes with floor-to-ceiling windows in the bedroom and reception room. There is a modern fully fitted kitchen with space for dining.

The DLR at Blackwall Station provides direct links to the city through Bank and the Jubilee Line at Canary Wharf, for quick trips across the city through Waterloo, Westminster, and Oxford Street. Cross rail is also available at Canary Wharf.

Tenure: Leasehold 986 years 4 months

Service Charge: £3234 approx.

Ground Rent: £0 Peppercorn

Local Authority: Tower Hamlets

Council Tax Band: E

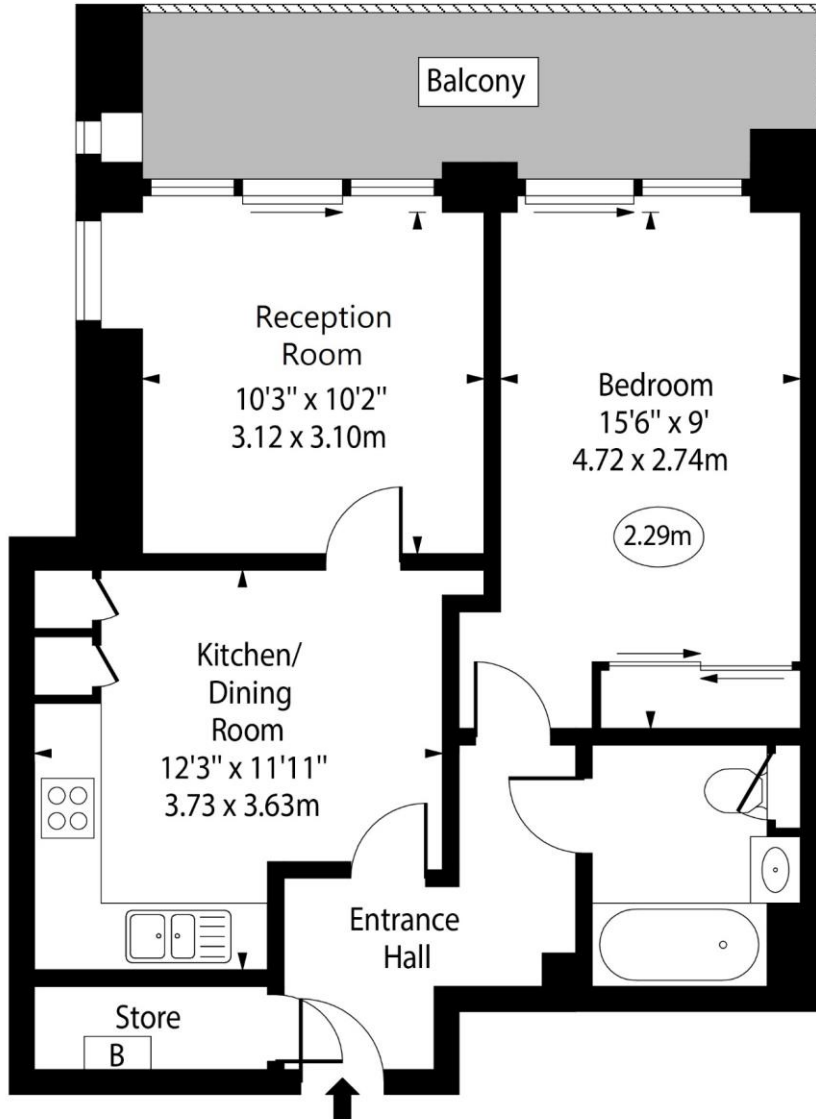
Energy Efficiency Rating		Current	Potential
Very energy efficient - lower running costs			
(92-100)	A		
(81-91)	B	84	84
(69-80)	C		
(55-68)	D		
(39-54)	E		
(21-38)	F		
(1-20)	G		
Not energy efficient - higher running costs			
England, Scotland & Wales		EU Directive 2002/91/EC	

Chestertons Canary Wharf & Greenwich Sales

Harbour Island
 28 Harbour Exchange Square
 London
 E14 9GE
 canarywharf@chestertons.co.uk
 020 7510 8300
 chestertons.co.uk

Horizons Tower, Yabsley Street, E14

○ - Ceiling Height



Third Floor

Approx Gross Internal Area 542 Sq Ft - 50.35 Sq M

For Illustration Purposes Only - Not To Scale

www.goldlens.co.uk

Ref. No. 024452K

