



Skyline Apartments

11 Makers Yard, E3

Asking Price £425,000

A stunning 1 bedroom apartment in Skyline Apartments E3, located on the 16th floor. The apartment is very modern and benefits from a private balcony with and the development has a concierge service.



Skyline Apartments

11 Makers Yard, E3

- Large 1 bed apartment
- Private balcony
- Concierge service
- Residents cinema room
- Close to Bromley by Bow underground station and Devons Road DLR
- Service charge - approx £2824 per annum
- Leasehold - approx 993 years
- Ground rent - £250



This 1 bedroom apartment is located on the 16th floor of Skyline Apartments in Bow Creek with Canary Wharf views.

It has an open plan kitchen/living area, a private balcony Residents have access to amenities such as a 24-hour concierge, cinema screening room and communal gardens.

Located where the three waters of Bow Creek, the River Lea and Limehouse meet in the heart of East London, Three Waters sits within the city's fastest growing area, offering vibrant waterside living. With the Tube at Bromley By Bow and Docklands Light Railway from Devons Road (DLR) close by giving swift access to Canary Wharf and the City.

Tenure: Leasehold 993 years 11 months

Service Charge: £2824

Ground Rent: £250 reviewed each and every 10th anniversary from the

Local Authority: Tower Hamlets

Council Tax Band: D

Energy Efficiency Rating		Current	Potential
Very energy efficient - lower running costs	A		
(92-100)	B	86	86
(81-91)	C		
(69-80)	D		
(55-68)	E		
(39-54)	F		
(21-38)	G		
Not energy efficient - higher running costs			
England, Scotland & Wales		EU Directive 2002/91/EC	

Chestertons Canary Wharf & Greenwich Sales

Harbour Island

28 Harbour Exchange Square

London

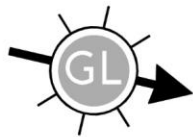
E14 9GE

canarywharf@chestertons.co.uk

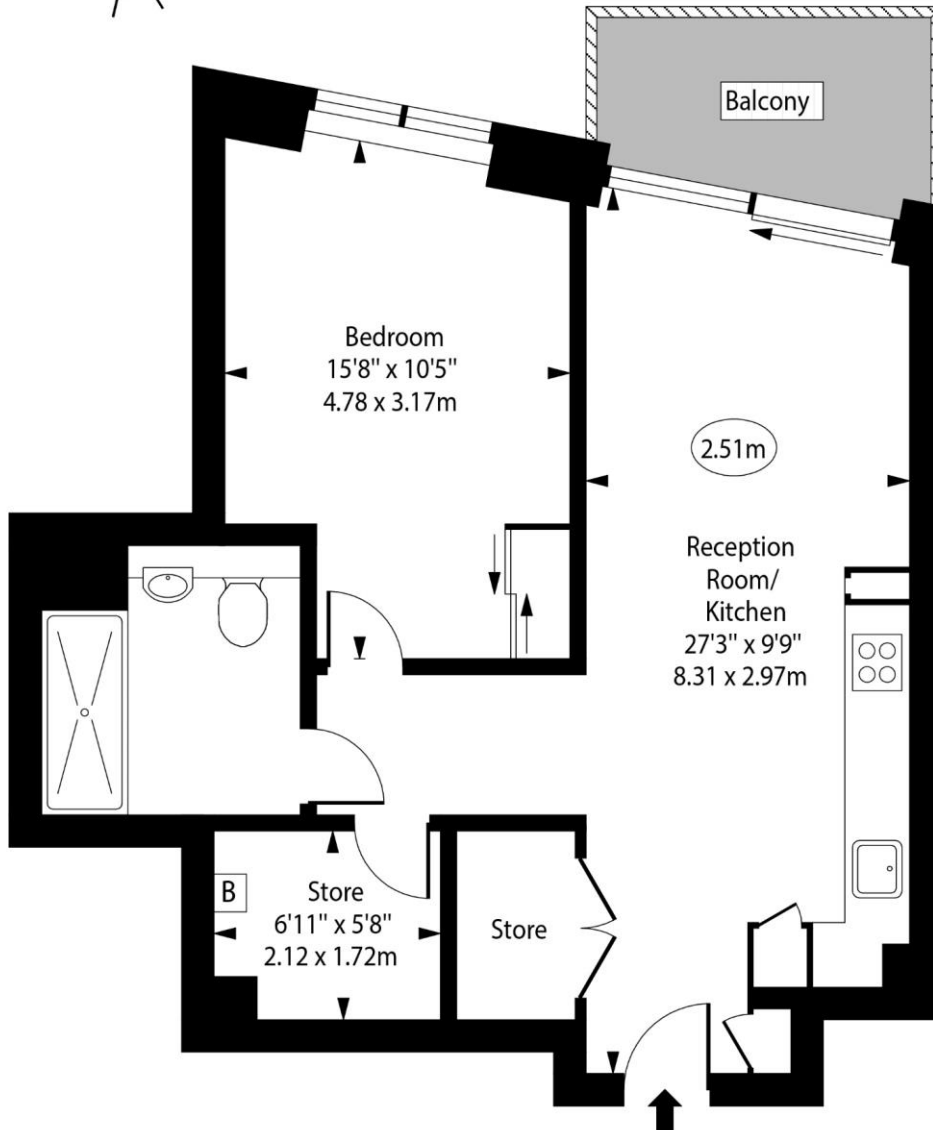
020 7510 8300

chestertons.co.uk

Skyline Apartments, Makers Yard, E3



○ - Ceiling Height



Sixteenth Floor

Approx Gross Internal Area 592 Sq Ft - 55.00 Sq M

For Illustration Purposes Only - Not To Scale

www.goldlens.co.uk

Ref. No. 024260K

