



Paper Mill Wharf

50 Narrow Street, E14

Asking Price £550,000

An extremely spacious 694sq ft, South-facing 5th floor 1 bedroom apartment with balcony overlooking the river, & offering sweeping views from Canary Wharf to The City, in perhaps Limehouse's most exclusive riverside development: Paper Mill Wharf.

CHESTERTONS



Paper Mill Wharf

50 Narrow Street, E14

- 694sq ft 5th floor 1 bedroom apartment with balcony.
- South-facing with direct river views; prime Limehouse location.
- Boutique, exclusive residential development with daytime portage.
- Converted warehouse at river front.
- Secure underground parking.



An extremely spacious 694sq ft, South-facing 5th floor 1 bedroom apartment with balcony overlooking the river, & offering sweeping views from Canary Wharf to The City, in perhaps Limehouse's most exclusive riverside development: Paper Mill Wharf.

Paper Mill Wharf is a converted warehouse - a "boutique" residential development - situated in the heart of "prime" Limehouse, on Narrow Street, adjacent to The River Thames. The development benefits from modernised communal areas, offering a high calibre feel to the development, as well as a daytime concierge service.

Narrow Street boasts an enviable collection of riverside pubs, restaurants, including Gordon Ramsay's Bread Street kitchen (formerly The Narrow), & is located conveniently for easy access to The City & Canary Wharf via Limehouse (DLR & overground) station.

The property comes with secure, underground parking.

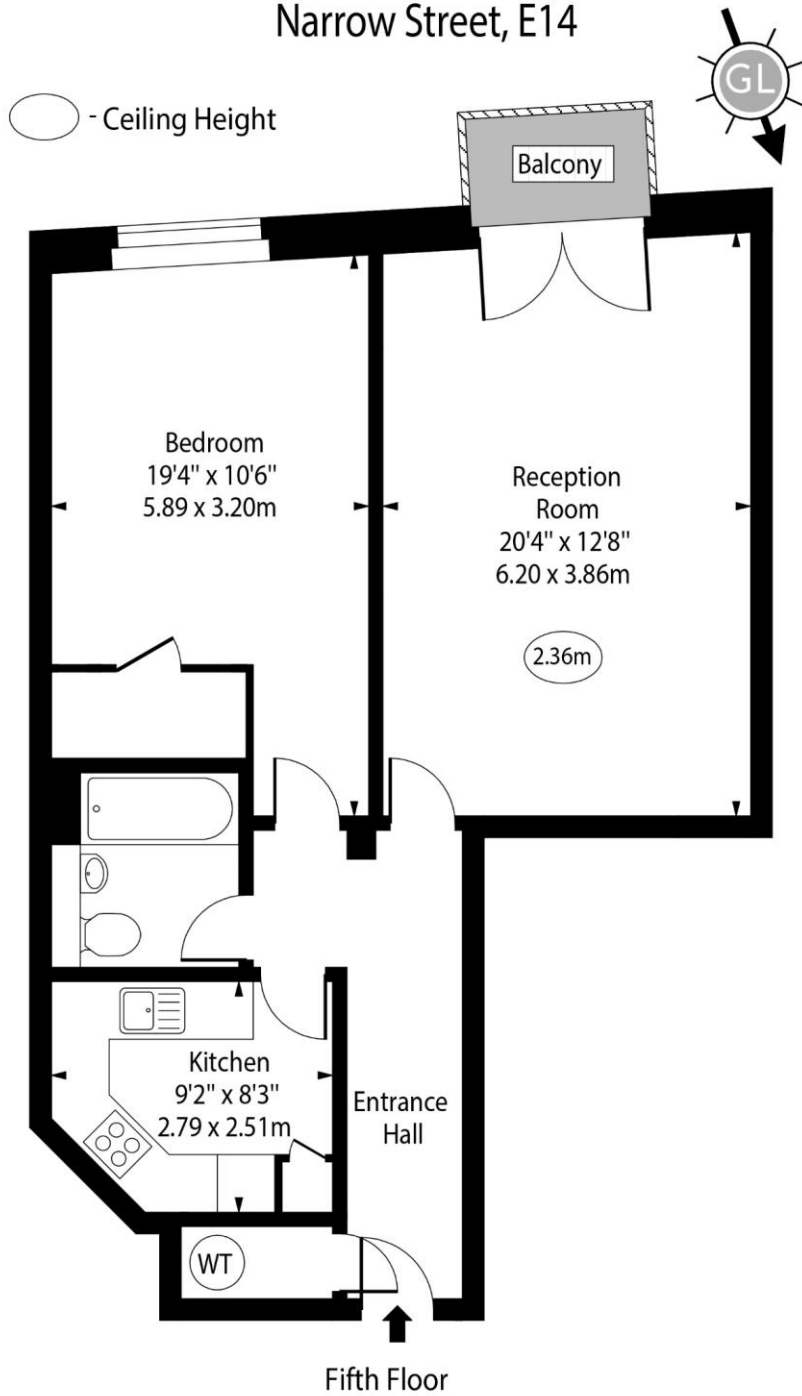
Tenure: Leasehold w/Share of Freehold – 93 years remaining approx.
Service Charge: £4,969pa approx.
Ground Rent: nil
Local Authority: Tower Hamlets
Council Tax Band: E

Energy Efficiency Rating		Current	Potential
Very energy efficient - lower running costs			
(92-)	A		
(81-91)	B	83	87
(69-80)	C		
(55-68)	D		
(39-54)	E		
(21-38)	F		
(1-20)	G		
Not energy efficient - higher running costs			
England, Scotland & Wales		EU Directive 2002/91/EC	

Chestertons Canary Wharf & Greenwich Sales

Harbour Island
 28 Harbour Exchange Square
 London
 E14 9GE
 canarywharf@chestertons.co.uk
 020 7510 8300
 chestertons.co.uk

Paper Mill Wharf, Narrow Street, E14



Approx Gross Internal Area 694 Sq Ft - 64.47 Sq M

For Illustration Purposes Only - Not To Scale

www.goldlens.co.uk

Ref. No. 024259K

