



Empire Wharf Road

London, E14

Asking Price £325,000

First floor 1 bed apartment in Empire Wharf Road, E14. Perfect apartment for a first time buyer wanting space at an affordable price.

CHESTERTONS



Empire Wharf Road

London, E14

- One bedroom apartment
- Close to Island Gardens DLR station
- Separated fitted kitchen
- Chain free



First floor, one bed, one bath apartment in Empire Wharf Road, E14. Comprising a spacious bedroom and living area and a separate fitted kitchen.

Millwall Park is close by offering an open green space to escape the urban scene. The property is located moments from Island Gardens (5mins walk) DLR station. The Thames clipper services, Greenwich foot tunnel and other local transport links are close by. From Island Gardens Canary Wharf can be reached via DLR services to Heron Quays in just 8mins. From Canary Wharf Elizabeth Line and Jubilee Line services operate simplifying commutes to key destinations around the capital.

Tenure: Leasehold 88 years 11 months

Service Charge: £1649 approx.

Ground Rent: £10

Local Authority: Tower Hamlets

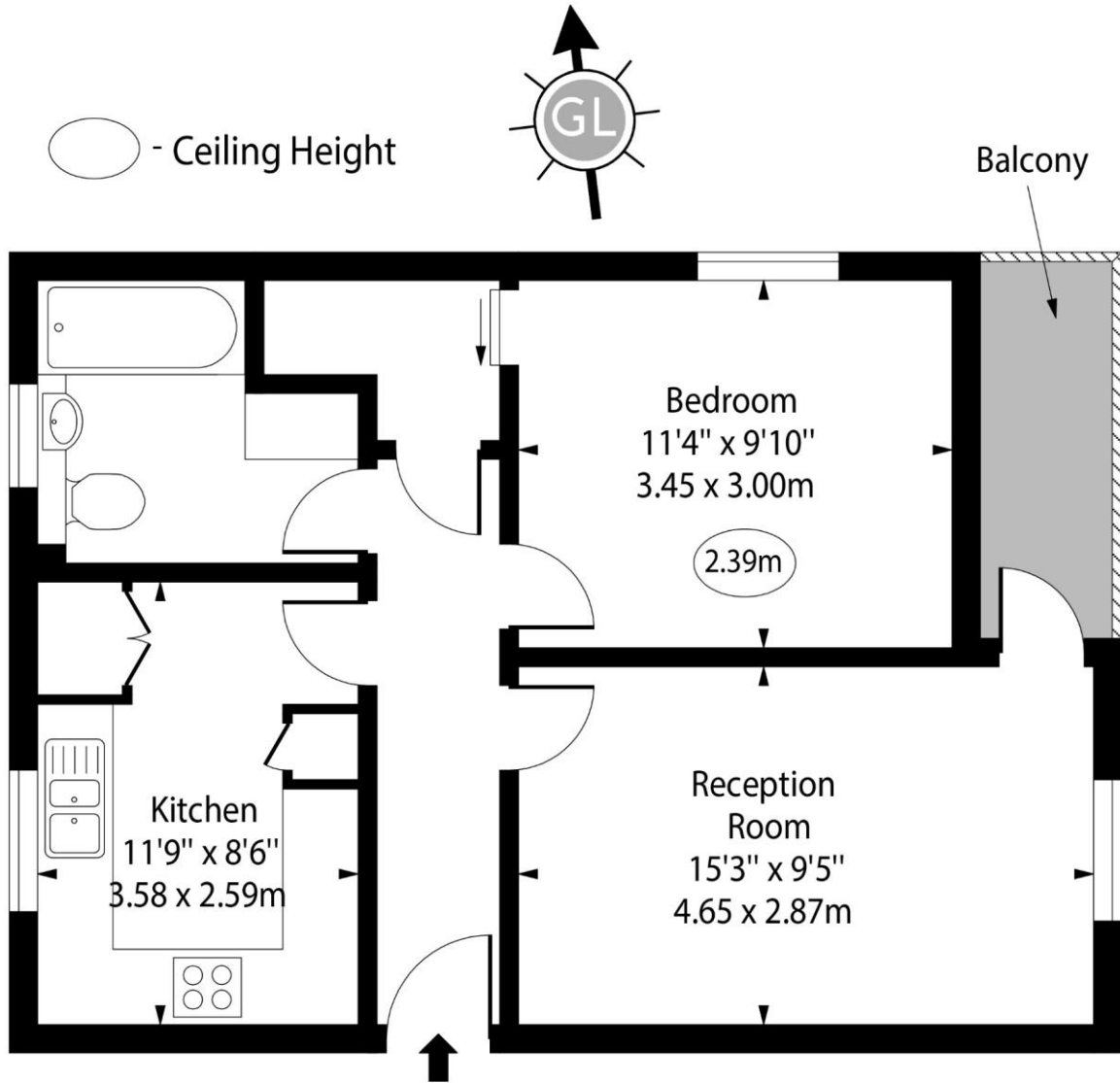
Council Tax Band: C

Energy Efficiency Rating		Current	Potential
Very energy efficient - lower running costs			
(92-100)	A		
(81-91)	B		
(69-80)	C	72	73
(55-68)	D		
(39-54)	E		
(21-38)	F		
(1-20)	G		
Not energy efficient - higher running costs			
England, Scotland & Wales		EU Directive 2002/91/EC	

Chestertons Canary Wharf & Greenwich Sales

Harbour Island
 28 Harbour Exchange Square
 London
 E14 9GE
 canarywharf@chestertons.co.uk
 020 7510 8300
 chestertons.co.uk

Empire Wharf Road, E14



Second Floor

Approx Gross Internal Area 515 Sq Ft - 47.84 Sq M

For Illustration Purposes Only - Not To Scale

www.goldlens.co.uk

Ref. No. 024124E

