



Poseidon Court

Homer Drive, E14

Asking Price £475,000

This stunning 1 bedroom apartment boasts outstanding views from its fourth floor, South Westerly aspect over the River Thames. A viewing is highly recommended to appreciate the space and finish of this lovely apartment !



Poseidon Court

Homer Drive, E14

- Large one bedroom apartment in Poseidon Court
- Excellent condition throughout
- River views
- Private balcony
- 24 hour concierge
- Access to residents gym, swimming pool and Jacuzzi
- Leasehold 993 years approx with Share of Freehold



A beautiful one-bedroom apartment in Poseidon Court with South Westerly aspect overlooking the River Thames. This apartment is presented in excellent condition throughout and boasts a larger-than-average balcony.

The apartment benefits from secure off-street parking and access to a residents' gym, swimming pool, Jacuzzi, and a 24-hour concierge service within the tranquil Cyclops Wharf gated development.

Nestled on Homer Drive, a highly sought-after residential area, it enjoys close proximity to Canary Wharf's exceptional array of shops, bars, and restaurants. Mudchute DLR station lies nearby, providing convenient links to the City and Canary Wharf. The latter has Elizabeth Line and Jubilee Line connections. Furthermore, a Thames Clipper service in the vicinity offers direct connections to Greenwich and Embankment.

Tenure: Share of Freehold 993 years 6 months

Service Charge: £6077 approx.

Ground Rent: £0 peppercorn

Local Authority: Tower Hamlets

Council Tax Band: E

Energy Efficiency Rating		Current	Potential
Very energy efficient - lower running costs			
(92-100)	A		
(81-91)	B	82	83
(69-80)	C		
(55-68)	D		
(39-54)	E		
(21-38)	F		
(1-20)	G		
Not energy efficient - higher running costs			
England, Scotland & Wales		EU Directive 2002/91/EC	

Chestertons Canary Wharf & Greenwich Sales

Harbour Island

28 Harbour Exchange Square

London

E14 9GE

canarywharf@chestertons.co.uk

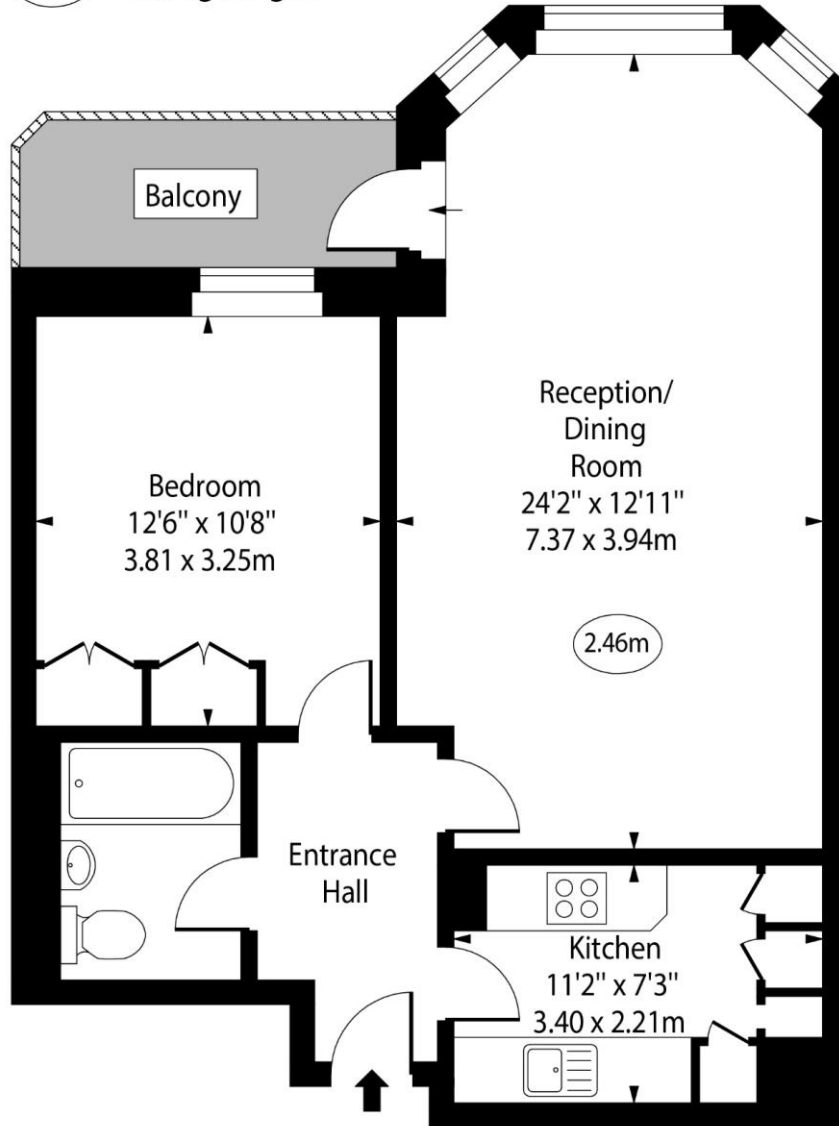
020 7510 8300

chestertons.co.uk

Poseidon Court,
Homer Drive, E14



○ - Ceiling Height



Fourth Floor

Approx Gross Internal Area 618 Sq Ft - 57.41 Sq M

For Illustration Purposes Only - Not To Scale

www.goldlens.co.uk

Ref. No. 024201K

