



Baltimore Wharf

London, E14

Asking Price £1,250,000

A 2024sq ft 9th floor 3 bedroom top floor apartment with a triple aspect reception & wraparound roof terrace. The property boasts a high specification, excellent on-site facilities inc. large gym, 25m swimming pool, 24hr concierge & 2 parking spaces.



Baltimore Wharf

London, E14

- 2065sq ft 3 bedroom 3 bathroom 9th floor penthouse apartment.
- Floor-to-ceiling windows; triple aspect reception; wraparound roof terrace.
- 24 hour concierge; 25 metre swimming pool; excellent on-site gym facilities.
- 2 parking spaces; offered chain free.



A 2024sq ft 9th (top) floor 3 bedroom 3 bathroom apartment with a very spacious triple aspect, open-plan reception room & wraparound roof terrace. The property boasts a high specification, floor-to-ceiling windows throughout, 3 double bedrooms (2 with en suite bathrooms), as well as 2 underground parking spaces. The premier apartments & penthouses at Baltimore Wharf also benefit from air conditioning / comfort cooling.

Baltimore Wharf offers residents excellent on-site facilities including access to the Nuffield Health gym, with its 25m swimming pool, & 24hr concierge & valet parking.

Baltimore Wharf is located within 100m of Crossharbour DLR station, with the shops, cafes, takeaways of Pepper Street also very close by, & Canary Wharf approximately 1km away.

The property is offered chain-free.

Tenure: Leasehold 981 years approx. remaining

Service Charge: £17,758 pa approx.

Ground Rent: £500 pa

Local Authority: Tower Hamlets

Council Tax Band: H

Chestertons Canary Wharf & Greenwich Sales

Harbour Island

28 Harbour Exchange Square

London

E14 9GE

canarywharf@chestertons.co.uk

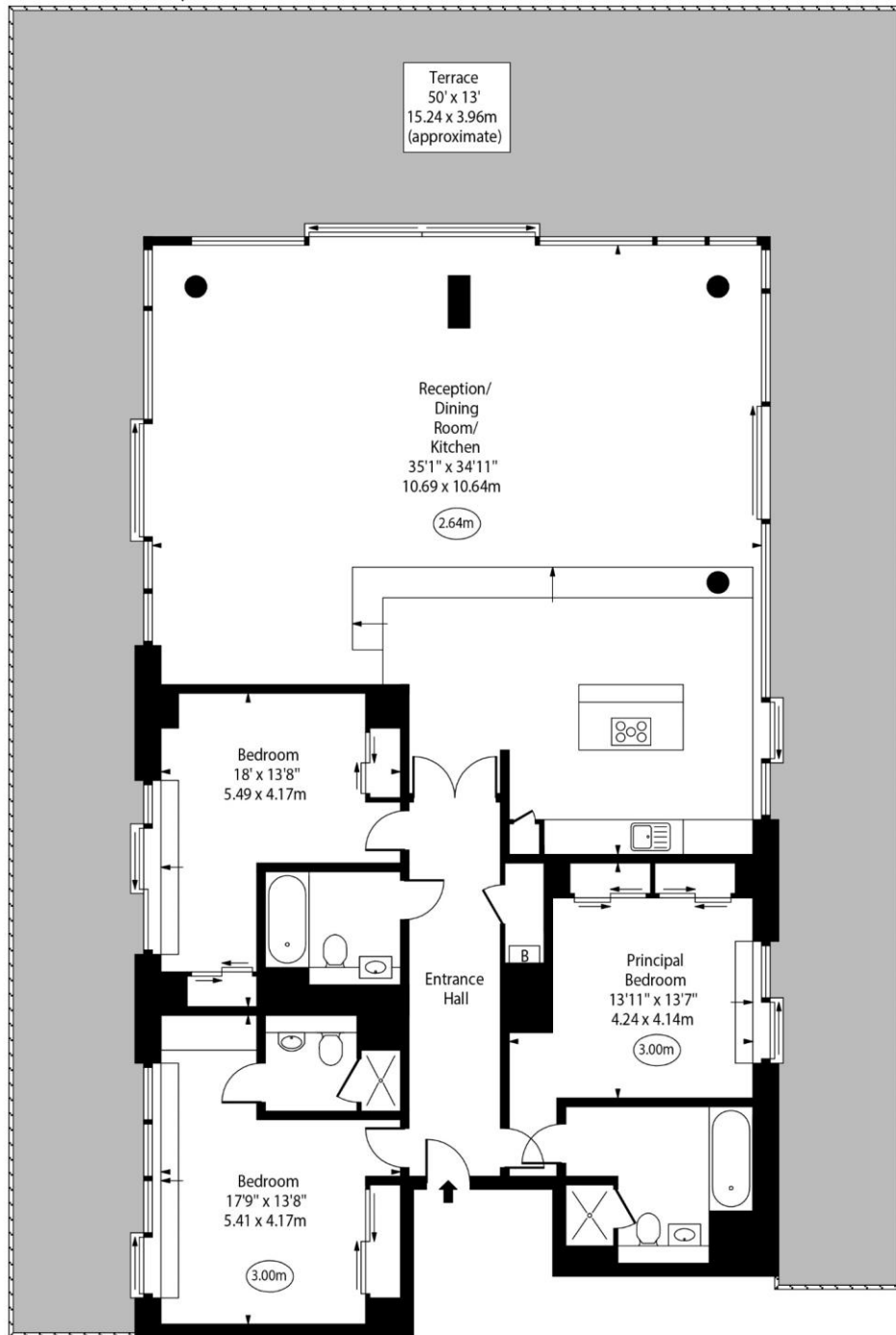
020 7510 8300

chestertons.co.uk



Baltimore Wharf, E14

○ - Ceiling Height



Ninth Floor

Approx Gross Internal Area 2024 Sq Ft - 188.03 Sq M

For Illustration Purposes Only - Not To Scale
www.goldlens.co.uk
Ref. No. 024168K

Chesterton Global Ltd trading as Chestertons for themselves and for the vendor of this property whose agents they are, give notice that (i) these particulars do not constitute any part of an offer or contract, (ii) all statements contained within these particulars are made without responsibility on the part of Chestertons or the vendor, (iii) whilst made in good faith, none of the statements contained within these particulars are to be relied upon as a statement or representation of fact, (iv) any intending purchasers must satisfy themselves by inspection or otherwise as to the correctness of each of the statements contained within these particulars, (v) the vendor does not make or give either Chestertons or any person in their employment any authority to make or give representation or warranty whatsoever in relation to this property. Wide angle lenses may be used. ©Copyright Chestertons | Chesterton Global Ltd | Registered Office 40 Connaught Street, Hyde Park, London W2 2AB Registered Company Number 05334580.



This paper is
100% recyclable