



Ontario Tower

4 Fairmont Avenue, E14

Price Range: £375,000 to £400,000

An exclusive, premier 1 bedroom apartment on the 27th floor of Ballymore's prestigious Ontario Tower development. The property benefits from towering views over London & the river, towards the Thames Barrier, as well as an upgraded specification. Offered chain-free.



Ontario Tower

4 Fairmont Avenue, E14

- 600sq ft 27th floor 1 bedroom premier apartment.
- Far-reaching views over East London & the River Thames.
- Striking modern building located in a prestigious development.
- Exceptional on-site facilities include: 24hr concierge, huge residents' gym & 25m swimming pool.
- Offered chain-free.

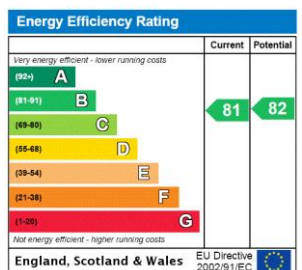


An exclusive, premier 1 bedroom apartment on the 27th floor of Ballymore's prestigious Ontario Tower at New Providence Wharf. The property benefits from towering views over London & the river, towards the Thames Barrier, as well as an upgraded internal specification only available on apartments on the 24th floor or higher.

Ontario Tower benefits from striking architecture by renowned architects Skidmore Owings & Merrill, & was built by Ballymore Properties, completed in 2007. The building benefits from 24 hour concierge, a sizeable residents' gym, & 25 metre swimming pool, as well as 24 hour site security. The development is located within 200m of Blackwall DLR station & within 1km of the Elizabeth Line (formerly Crossrail) station at Canary Wharf.

Offered chain-free.

Tenure: Leasehold – 976 years remaining approx.
Service Charge: £6,944pa approx.
Ground Rent: £400pa
Local Authority: Tower Hamlets
Council Tax Band: F

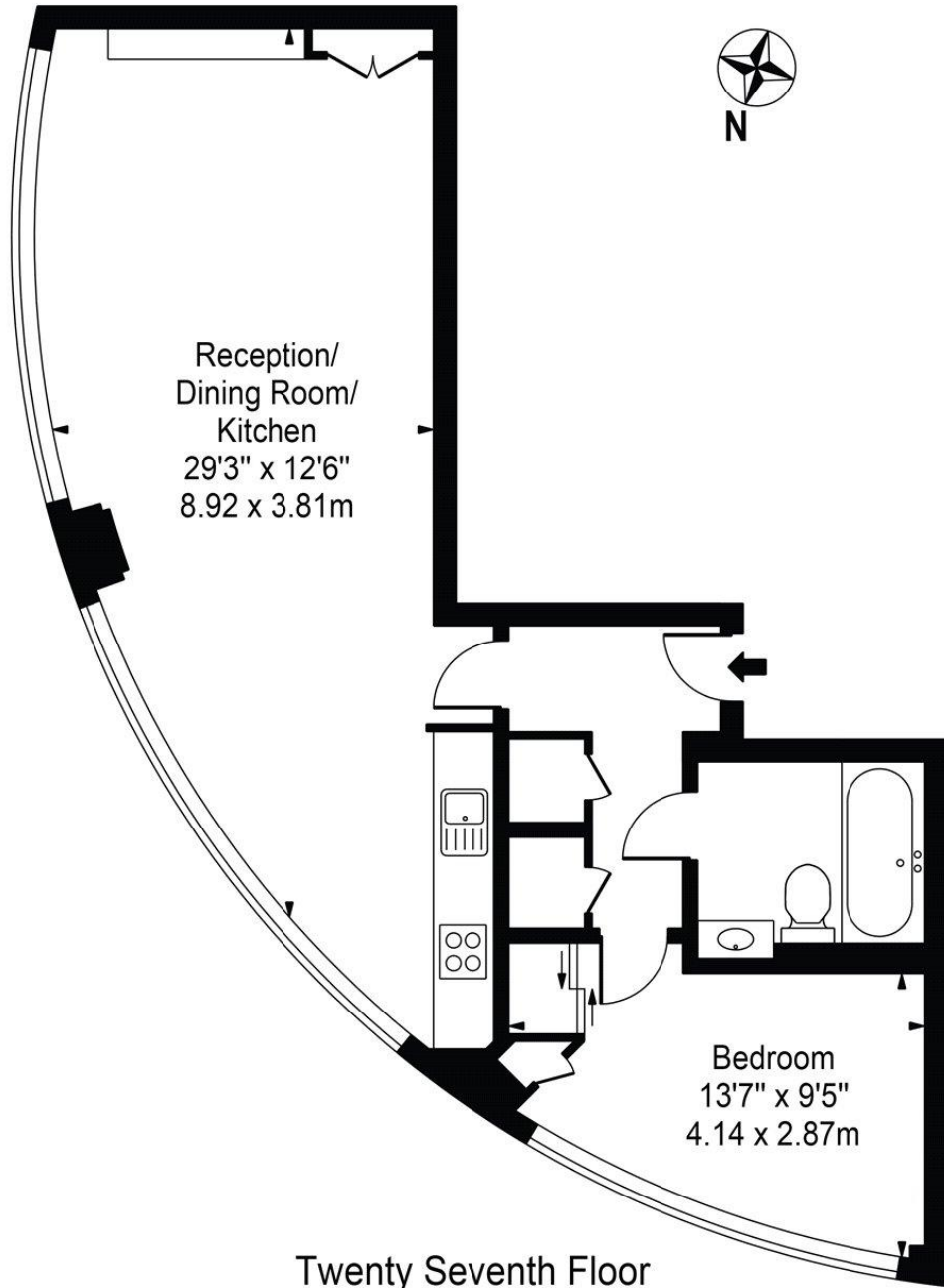


Chestertons Canary Wharf & Greenwich Sales

Harbour Island
 28 Harbour Exchange Square
 London
 E14 9GE
 canarywharf@chestertons.co.uk
 020 7510 8300
 chestertons.co.uk

Ontario Tower, E14

Approx. Gross Internal Area 604 Sq Ft - 56.11 Sq M



Twenty Seventh Floor

For Illustration Purposes Only - Not To Scale

This floor plan should be used as a general outline for guidance only and does not constitute in whole or in part an offer or contract. Any intending purchaser or lessee should satisfy themselves by inspection, searches, enquiries and full survey as to the correctness of each statement. Any areas, measurements or distances quoted are approximate and should not be used to value a property or be the basis of any sale or let.

