

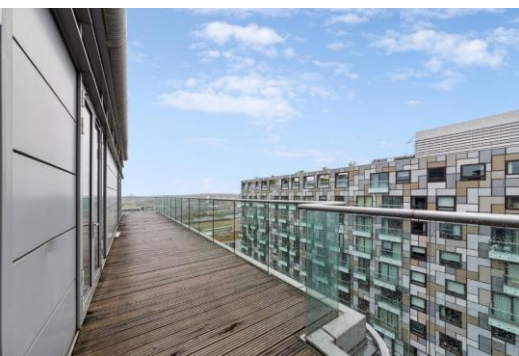


Ability Place

Canary Wharf, E14

Asking Price £850,000

A spacious 21st floor penthouse apartment in this sought after development. The property boasts 2 double bedrooms, 2 bathrooms, a large & spacious reception with open plan kitchen & wraparound balcony boasting views of the Canary Wharf sky line. Secure, underground parking space included. Offered chain-free.



Ability Place

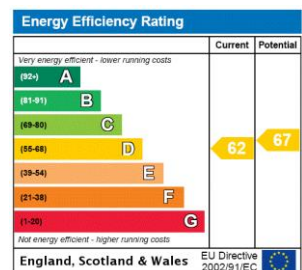
Canary Wharf, E14

- 1122sq ft 21st floor 2 bedroom 2 bathroom apartment.
- Penthouse apartment with wraparound terrace.
- Views of the Canary Wharf sky line.
- 24hr concierge; residents' gym; secure underground parking space.



A spacious 21st floor penthouse apartment in this sought after development close to Canary Wharf. The property boasts 2 double bedrooms, 2 bathrooms a large and spacious reception with open plan kitchen & wraparound balcony boasting views of the Canary Wharf sky line. The development benefits from a 24 hour concierge & residents' gym & is located walking distance from Canary Wharf & all its amenities. The property benefits from a secure allocated parking space, & is offered chain-free.

Tenure: Leasehold – 109 years remaining approx.
Service Charge: £8,500pa approx
Ground Rent: £500pa
Local Authority: Tower Hamlets
Council Tax Band: F

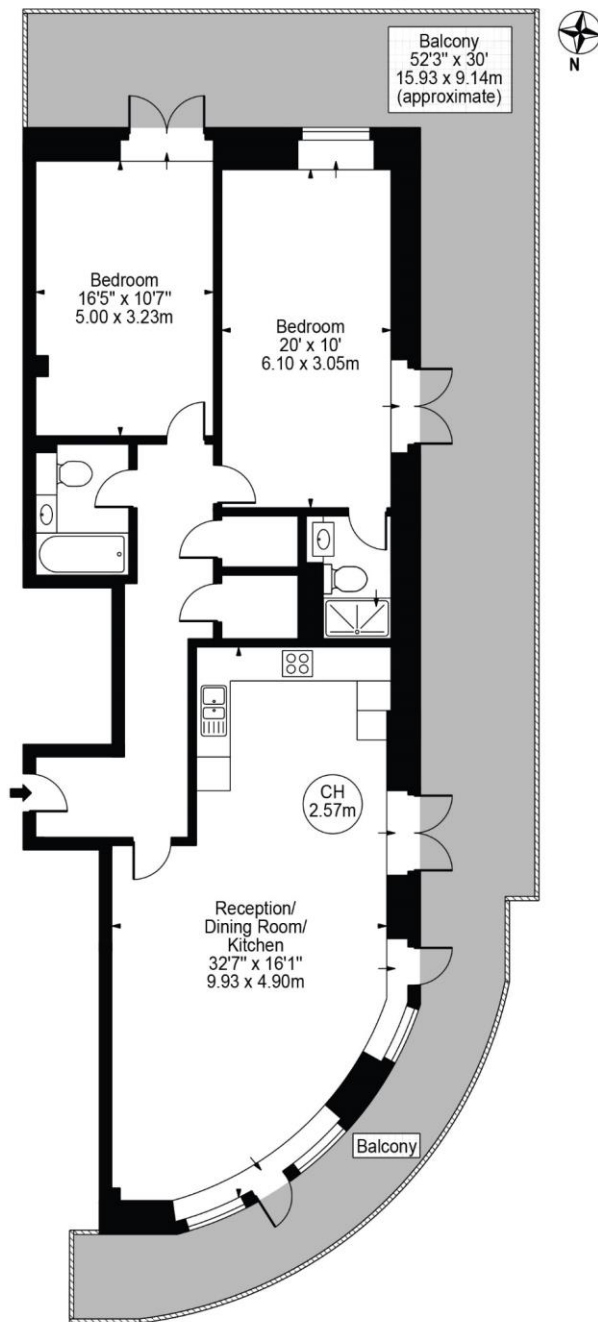


Chestertons Canary Wharf & Greenwich Sales

Harbour Island
 28 Harbour Exchange Square
 London
 E14 9GE
 canarywharf@chestertons.co.uk
 020 7510 8300
 chestertons.co.uk

Ability Place, E14

Approx. Gross Internal Area 1122 Sq Ft - 104.24 Sq M



Twenty First Floor
For Illustration Purposes Only - Not To Scale

This floor plan should be used as a general outline for guidance only and does not constitute in whole or in part an offer or contract. Any intending purchaser or lessee should satisfy themselves by inspection, searches, enquiries and full survey as to the correctness of each statement. Any areas, measurements or distances quoted are approximate and should not be used to value a property or be the basis of any sale or let.

