

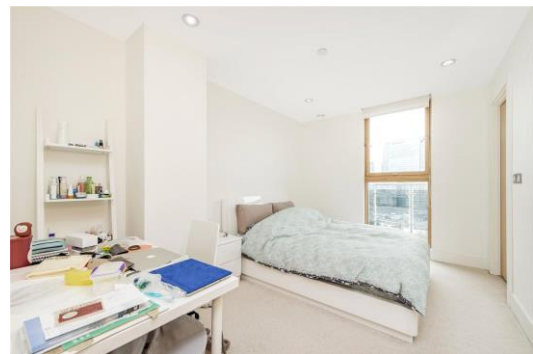


Streamlight Tower

9 Province Square, E14

Asking Price £525,000

Comprising 2 double bedrooms, 2 bathrooms and a sleek finish, this apartment boasts views of Canary Wharf and Poplar Marina from the private balcony. Ideally located walking distance to Canary Wharf and all its amenities.



Streamlight Tower

9 Province Square, E14

- Two bedroom apartment
- 21st Floor
- Stunning Canary Wharf & City Views
- Private Balcony
- Two Bathrooms
- Underfloor Heating
- Concierge
- Lease: 999 years from and including 24 June 2011



A stunning two bedroom, two bathroom apartment set in this modern development. This beautiful bright apartment features a bright open plan kitchen reception room, floor to ceiling windows and a full length balcony with stunning river views.

Streamlight Tower is moments from the Poplar Dock Marina and within easy reach of the shops, bars and restaurants of Canary Wharf. The property is within walking distance of Blackwall Station for DLR and Canary wharf Station for Jubilee line and Crossrail.

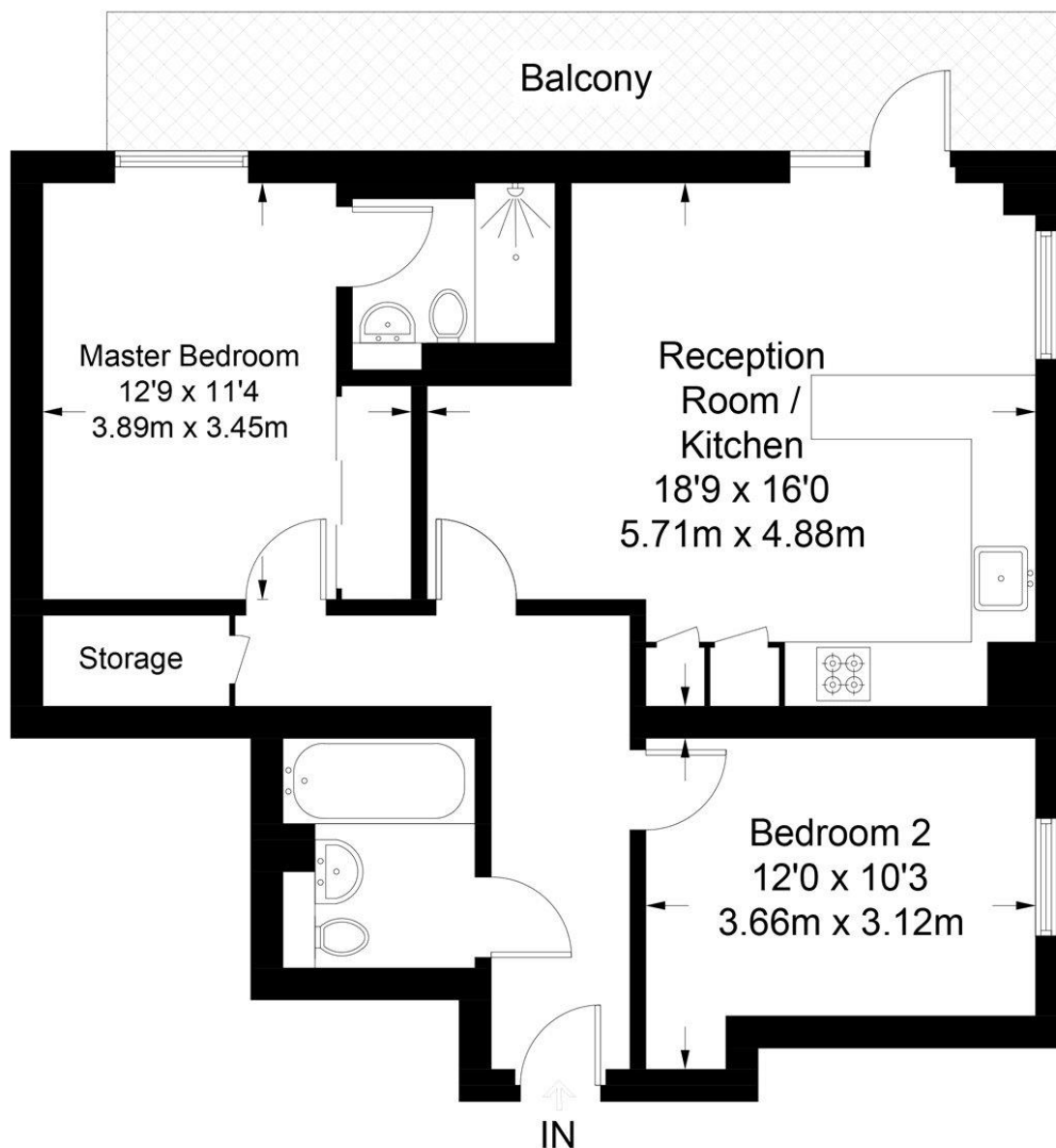
Tenure: Leasehold 986 years
Service Charge: £4821 pa approx.
Ground Rent: £350 pa
Local Authority: Tower Hamlets
Council Tax Band: E

Chestertons Canary Wharf & Greenwich Sales

Harbour Island
28 Harbour Exchange Square
London
E14 9GE
canarywharf@chestertons.co.uk
020 7510 8300
chestertons.co.uk

Streamlight Tower

Approximate Gross Internal Area = 719 sq ft / 66.8 sq m



Twenty First Floor

Not to scale, for guidance only and must not be relied upon as a statement of fact.
All measurements and areas are approximate only and have been prepared in accordance with the current edition of the RICS Code of Measuring Practice.

