



Prince Court

5 Nelson Street, E16

Offers in Excess of £500,000

A stylish, & modern 1050sq ft 2nd floor 3 bedroom 2 bathroom apartment with balcony in Prince Court, in the Royal Gateway development in Canning Town. The property offers spacious accommodation throughout, as well as a convenient location. Offered chain-free.



Prince Court

5 Nelson Street, E16

- 1050sq ft 2nd floor 3 bedroom 2 bathroom apartment with balcony.
- Modern development (5-6 years' old approx.) with 24hr concierge service.
- Excellent location approx. 600m from Canning Town station.
- Close to local amenities.
- Offered chain-free.



A stylish & modern 1050sq ft 2nd floor 3 bedroom 2 bathroom apartment with balcony in Prince Court, in the Royal Gateway development in Canning Town. The property offers spacious accommodation throughout, as well as a convenient location very close to Canning Town Jubilee Line & DLR station for easy access to Canary Wharf, Stratford & Central London. The local shops, cafes, takeaways, & amenities of Canning Town are also nearby.

The Royal Gateway development offers a 24 hour concierge service. The property is offered chain-free.

Tenure: Leasehold – 239 years remaining approx.
Service Charge: £5,344pa approx.
Ground Rent: £650pa
Local Authority: Newham
Council Tax Band: E

Energy Efficiency Rating		Current	Potential
Very energy efficient – lower running costs	A		
(92-100)	B	88	88
(81-91)	C		
(69-80)	D		
(55-68)	E		
(39-54)	F		
(21-38)	G		
Not energy efficient – higher running costs			
England, Scotland & Wales		EU Directive 2002/91/EC	

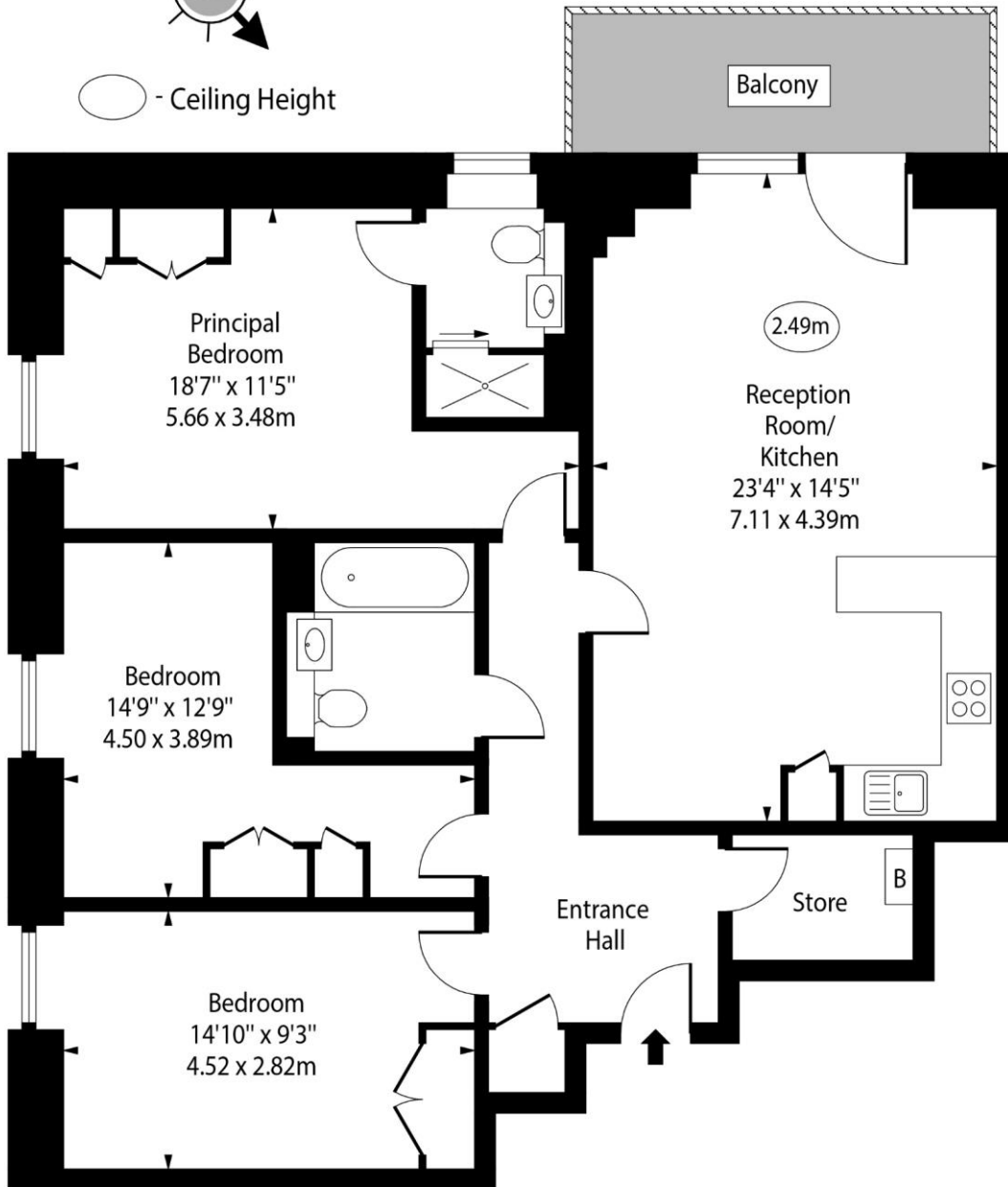
Chestertons Canary Wharf & Greenwich Sales

Harbour Island
 28 Harbour Exchange Square
 London
 E14 9GE
 sales.docklands@chestertons.co.uk
 020 7510 8300
 chestertons.co.uk

Prince Court,
Nelson Street, E16



○ - Ceiling Height



Second Floor

Approx Gross Internal Area 1050 Sq Ft - 97.55 Sq M

For Illustration Purposes Only - Not To Scale

www.goldlens.co.uk

Ref. No. 020826K

