



# Mellish Street

London, E14

Offers in excess of £800,000

A Victorian mid terrace Freehold house with spacious interior and a private garden to the rear. Mellish Street benefits from a close proximity to Canary Wharf for a wealth of bars, restaurants and shops. South Quay and Crossharbour DLR are close by.



# Mellish Street

London, E14

- 3/4 bedroom Victorian terraced house
- Spacious kitchen/diner
- Private front and rear garden
- Loft space
- Fireplaces in bedrooms
- South Quay and Crossharbour DLR stations 0.3 mile
- Walking distance to Canary Wharf 0.6 mile



This 3/4 bed Victorian terraced house is idyllically located in the heart of the Isle of Dogs. Mellish Street enjoys easy access to a range of local amenities and transport links, as well as the superb shops and trendy eateries that Canary Wharf affords.

The high ceilings and large windows provide an abundance of natural light, enhancing the warmth and inviting feeling throughout.

This house is currently configured for the Lettings market with 4 double bedrooms all with feature fireplaces. There is a large kitchen-diner and separate reception room. The layout could be redesigned to suit a family and there is potential to extend and develop the loft space.

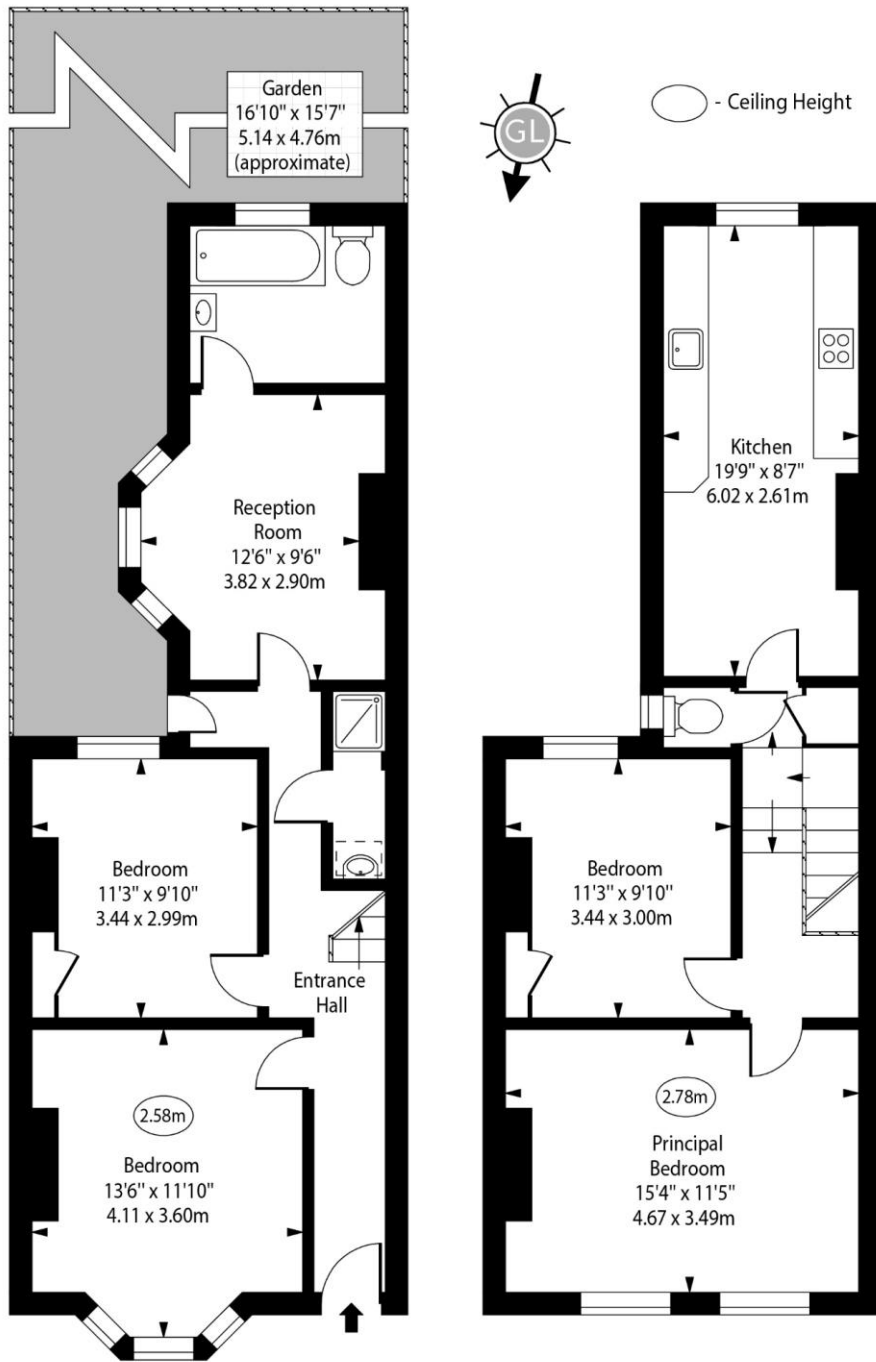
**Tenure:** Freehold  
**Service Charge:** £0  
**Ground Rent:** £0  
**Local Authority:** Tower Hamlets  
**Council Tax Band:** D

Energy Efficiency Rating		Current	Potential
Very energy efficient - lower running costs	A		
(92-100)	B		86
(81-91)	C		
(69-80)	D	64	
(55-68)	E		
(39-54)	F		
(21-38)	G		
(1-20)			
Not energy efficient - higher running costs			
England, Scotland & Wales		EU Directive 2002/91/EC	

### Chestertons Canary Wharf & Greenwich Sales

Harbour Island  
 28 Harbour Exchange Square  
 London  
 E14 9GE  
 canarywharf@chestertons.co.uk  
 020 7510 8300  
 chestertons.co.uk

# Mellish Street, E14



Ground Floor

Approx Gross Internal Area

First Floor

1140 Sq Ft - 105.90 Sq M

For Illustration Purposes Only - Not To Scale

[www.goldlens.co.uk](http://www.goldlens.co.uk)

Ref. No. 022670J

