



Indecon Square

London, E14

Offers in excess of £700,000

A 10th floor 1,183 sq ft 3 bedroom apartment located in Indecon Square, a popular development in one of the most desirable locations in E14. The property offers an abundance of space & a modern finish throughout. A secure parking space (right to park) is included.



Indescon Square

London, E14

- 1,183 sq ft 3-bedroom 3 bathroom apartment.
- Located in the heart of South Quay.
- Close to Canary Wharf & all amenities.
- 24hr concierge service.
- Secure underground parking space (right to park).
- Offered chain-free.

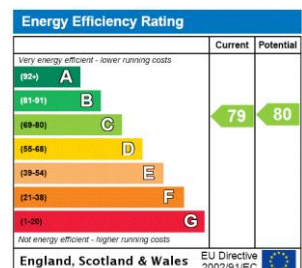


A 10th floor 1,183 sq ft 3 bedroom apartment located in Indecon Square, a popular development in one of the most desirable locations in E14 - set within the heart of South Quay. The property offers an abundance of space & a modern finish throughout, as well as a large, covered balcony, & a viewing corridor towards Canary Wharf.

In addition to 3 double bedrooms, the property comprises 3 bathrooms, a large open plan reception & fully equipped kitchen, 2 balconies & a secure, underground parking space (right to park).

Nearby amenities, include a 24hr supermarket, a Tian Tian Chinese supermarket, the Canary Wharf Shopping Centre and various local amenities. The property is also within close proximity to Canary Wharf Jubilee Line station & South Quay DLR station, as well as the Elizabeth Line station.

Tenure: Leasehold – 980 years remaining approx.
Service Charge: £5,009pa approx.
Ground Rent: £500pa doubling every 25th anniversary of the Commencement Date
Local Authority: Tower Hamlets
Council Tax Band: G

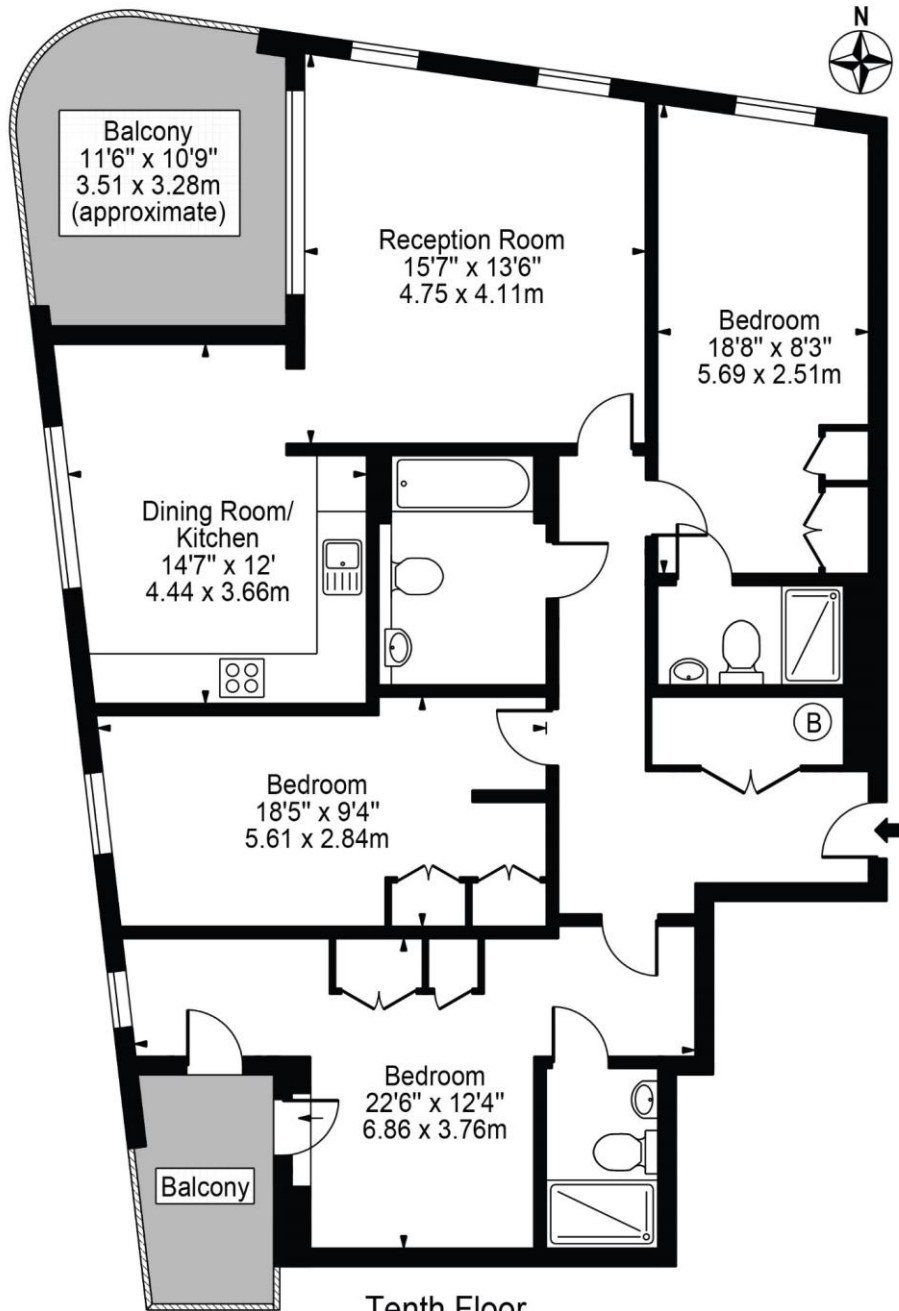


Chestertons Canary Wharf & Greenwich Sales

Harbour Island
 28 Harbour Exchange Square
 London
 E14 9GE
 canarywharf@chestertons.co.uk
 020 7510 8300
 chestertons.co.uk

Indecon Square, E14

Approx. Gross Internal Area 1183 Sq Ft - 109.90 Sq M



For Illustration Purposes Only - Not To Scale

This floor plan should be used as a general outline for guidance only and does not constitute in whole or in part an offer or contract. Any intending purchaser or lessee should satisfy themselves by inspection, searches, enquiries and full survey as to the correctness of each statement. Any areas, measurements or distances quoted are approximate and should not be used to value a property or be the basis of any sale or let.

