



Indecon Square

London, E14

Asking Price £800,000

A 10th floor 1,183 sq ft 3 bedroom apartment located in Indecon Square, a popular development in one of the most desirable locations in E14. The property offers an abundance of space & a modern finish throughout. Allocated parking is included. Offered chain-free.



Indescon Square

London, E14

- 1,183 sq ft 3-bedroom 3 bathroom apartment.
- Located in the heart of South Quay.
- Close to Canary Wharf & all amenities.
- 24hr concierge service.
- Secure underground parking space.
- Offered chain-free.



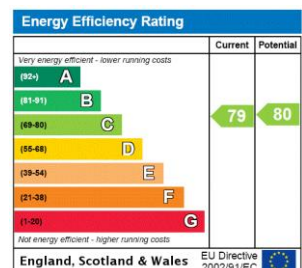
A 10th floor 1,183 sq ft 3 bedroom apartment located in Indecon Square, a popular development in one of the most desirable locations in E14 - set within the heart of South Quay. The property offers an abundance of space & a modern finish throughout, as well as a large, covered balcony, & a viewing corridor towards Canary Wharf.

In addition to 3 double bedrooms, the property comprises 3 bathrooms, a large open plan reception & fully equipped kitchen, 2 balconies & an allocated parking space.

Nearby amenities include a 24hr supermarket, a Tian Tian Chinese supermarket, the Canary Wharf Shopping Centre and various local amenities. The property is also within close proximity to Canary Wharf Jubilee Line station & South Quay DLR station, as well as the Elizabeth Line station.

Offered chain-free.

Tenure:	Leasehold – 981 years remaining approx.
Service Charge:	£5,009pa approx.
Ground Rent:	£500pa
Local Authority:	Tower Hamlets
Council Tax Band:	G

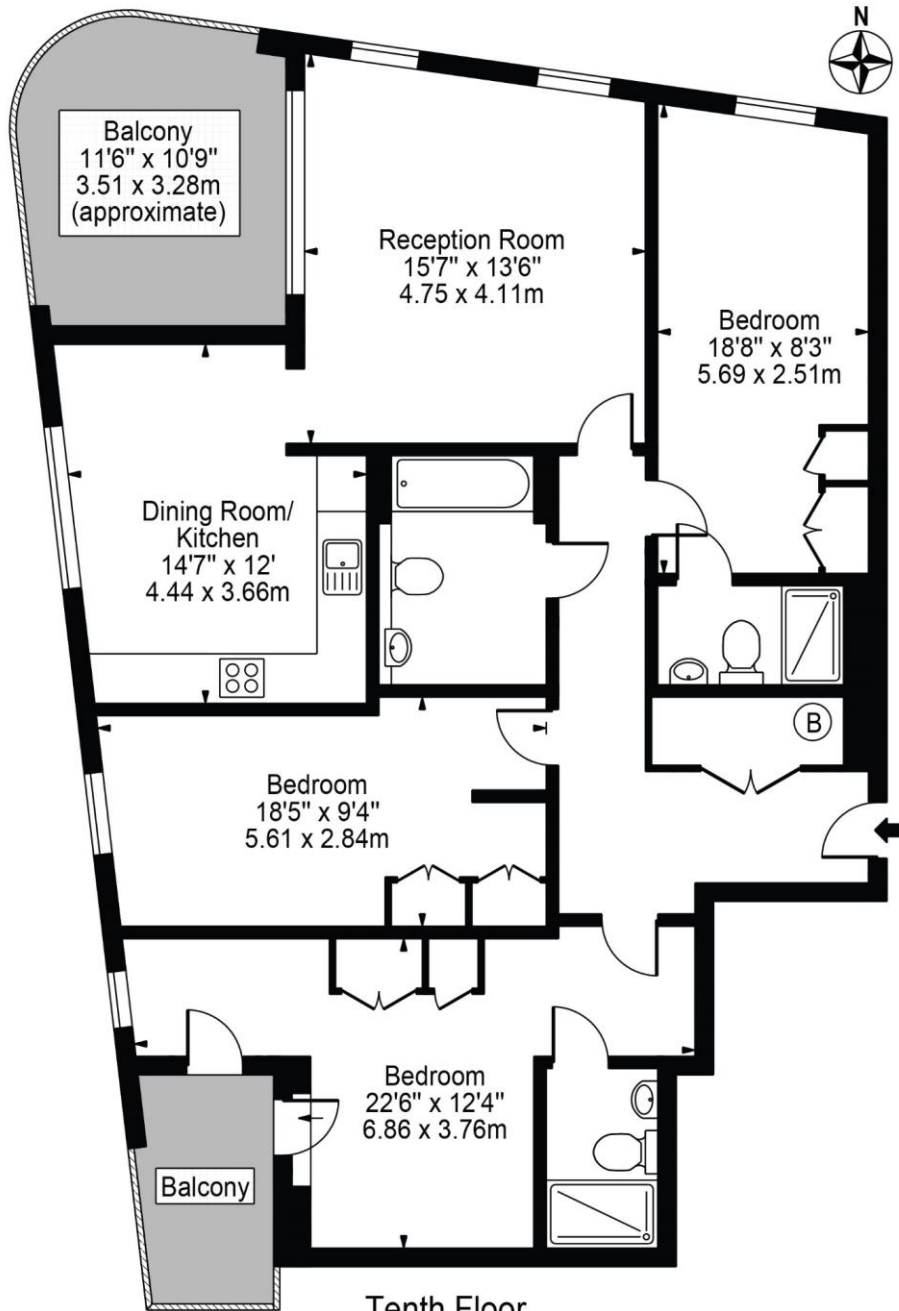


Chestertons Canary Wharf & Greenwich Sales

Harbour Island
 28 Harbour Exchange Square
 London
 E14 9GE
 canarywharf@chestertons.co.uk
 020 7510 8300
 chestertons.co.uk

Indecon Square, E14

Approx. Gross Internal Area 1183 Sq Ft - 109.90 Sq M



Tenth Floor
For Illustration Purposes Only - Not To Scale

This floor plan should be used as a general outline for guidance only and does not constitute in whole or in part an offer or contract. Any intending purchaser or lessee should satisfy themselves by inspection, searches, enquiries and full survey as to the correctness of each statement. Any areas, measurements or distances quoted are approximate and should not be used to value a property or be the basis of any sale or let.