



# Riverway House

260 Westferry Road, E14

Asking Price £350,000

A well-presented two double-bedroomed, lateral apartment, situated in Riverway House, part of the ever-popular Burrell's Wharf Square development generating 6.5% Gross Yield!





# Riverway House

## 260 Westferry Road, E14

- Popular Thameside Development
- Buy-To-Let Investment 6.5% Gross Yield!
- Share of Freehold
- Allocated Parking
- 24hr Concierge
- Residents Gym
- Sauna & Swimming Pool
- Mudchute DLR Station 0.42km





Accommodation comprises of two good-sized double bedrooms, a large reception room, with space for a dining area, alongside a lovely separate kitchen and a well-presented three-piece bathroom suite.

The apartment is rented out on an AST Agreement for £1,900pcm until 10/01/2027.

Burrell's Wharf was the site of the construction of (at the time) the world's largest steam ship - SS Great Eastern. The 1850s & 1860s-built buildings were converted in the late 1980s by Galliard Homes, & the site was completed in the early 1990s with the addition of a number of newly-built blocks.

Burrell's Wharf features a community feel absent in many developments in the area. The development is centred around a communal courtyard, & is located next to the River Thames. On-site facilities are excellent: well-staffed site office (24 hour portering), a residents' gym, sauna & swimming pool.

Burrell's Wharf is located approximately 600m from Mudchute DLR station, & within 100m of Mast House Terrace pier for Thames Clipper service for easy access to Canary Wharf, The O2 Centre & central London.

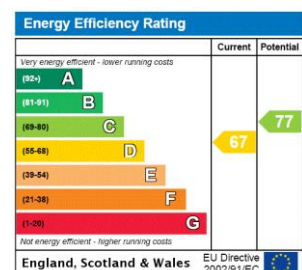
**Tenure:** Share of Freehold 89 years

**Service Charge:** £3930 pa approx.

**Ground Rent:** £50 pa

**Local Authority:** Tower Hamlets

**Council Tax Band:** C



### *Chestertons Canary Wharf & Greenwich Sales*

Harbour Island

28 Harbour Exchange Square

London

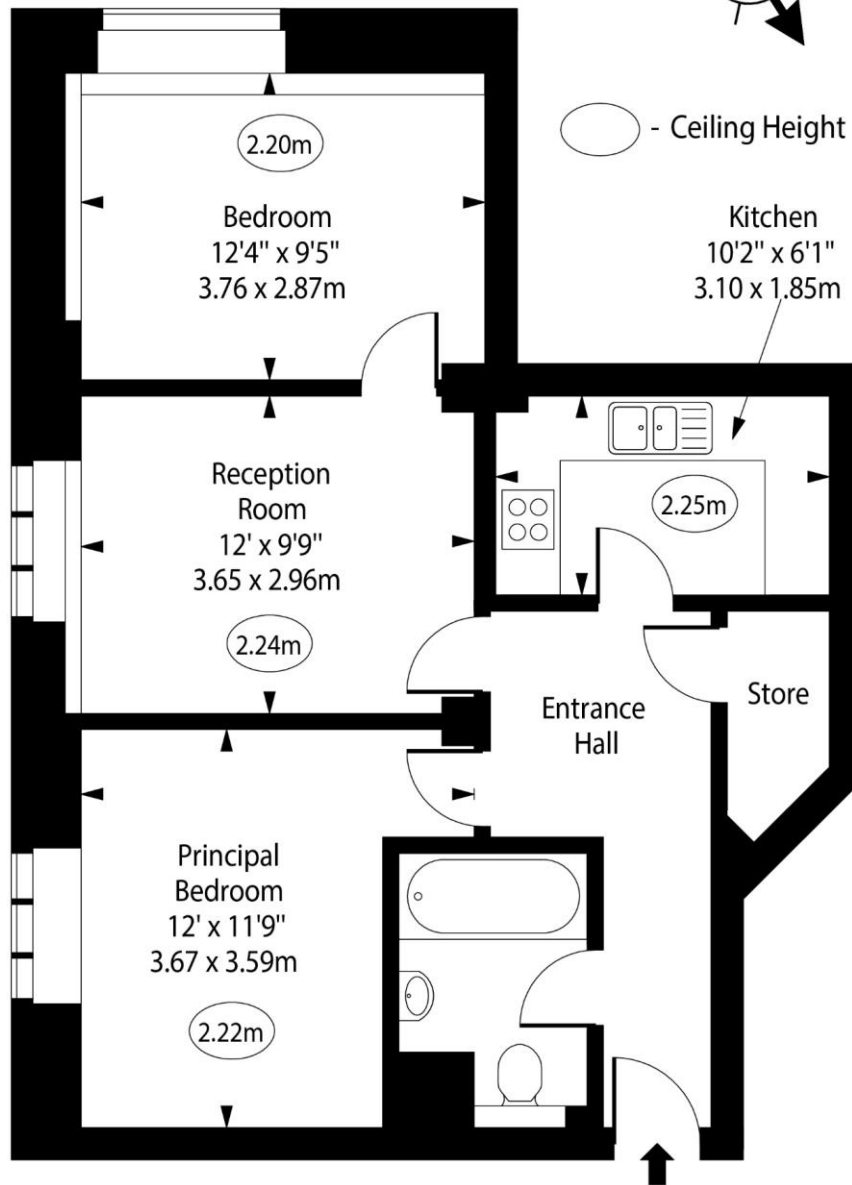
E14 9GE

canarywharf@chestertons.co.uk

020 7510 8300

chestertons.co.uk

# Riverway House, Westferry Road, E14



Lower Ground Floor

Approx Gross Internal Area      600 Sq Ft - 55.74 Sq M

For Illustration Purposes Only - Not To Scale

[www.goldlens.co.uk](http://www.goldlens.co.uk)

Ref. No. 022106R

