



Pointers Close

London, E14

Offers in Excess of £900,000

A beautiful, extended 1416sq ft 4 bedroom 3 bathroom freehold house in Pointers Close. The house is wider than average for these houses, & enjoys a fabulous, open-plan kitchen / living room with marble-effect porcelain flooring, & a large kitchen island with skylight.



Pointers Close

London, E14

- 1416sq ft 4 bedroom 3 bathroom freehold townhouse with garden.
- Located in a riverside development next to the Thames Path.
- Renovated throughout to an excellent standard.
- Ground floor rear extension incorporating a large open-plan kitchen / reception room.
- Offered chain-free.

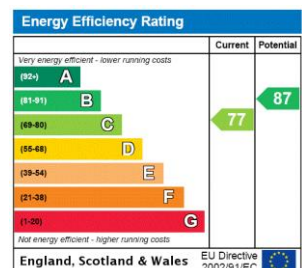


A beautiful, & extended 1416sq ft 4 bedroom 3 bathroom freehold townhouse in Pointers Close. The house is wider than average for these houses, & enjoys a fabulous, open-plan German kitchen / living room with marble-effect porcelain flooring, a large kitchen island with skylight that bathes the room in natural light. There is a ground floor bedroom with accompanying shower room, ideal for elderly guests, or a live-in nanny. On the 1st floor there are 2 double bedrooms, 1 with en suite, & the 2nd floor is occupied by the principal bedroom & deluxe bathroom suite. The house also benefits from a paved, private rear garden, & parking to the front of the house.

Pointers Close is situated close to the Thames Path, for riverside walks around the island, & via the Greenwich Foot Tunnel to Greenwich beyond. Masthouse Terrace Pier is located within 200m for Thames Clipper / Uberboat services to Westminster, & beyond, all the way to Putney. Mudchute DLR station is located within 750m.

The house is offered chain-free.

Tenure: Freehold
Local Authority: Tower Hamlets
Council Tax Band: E



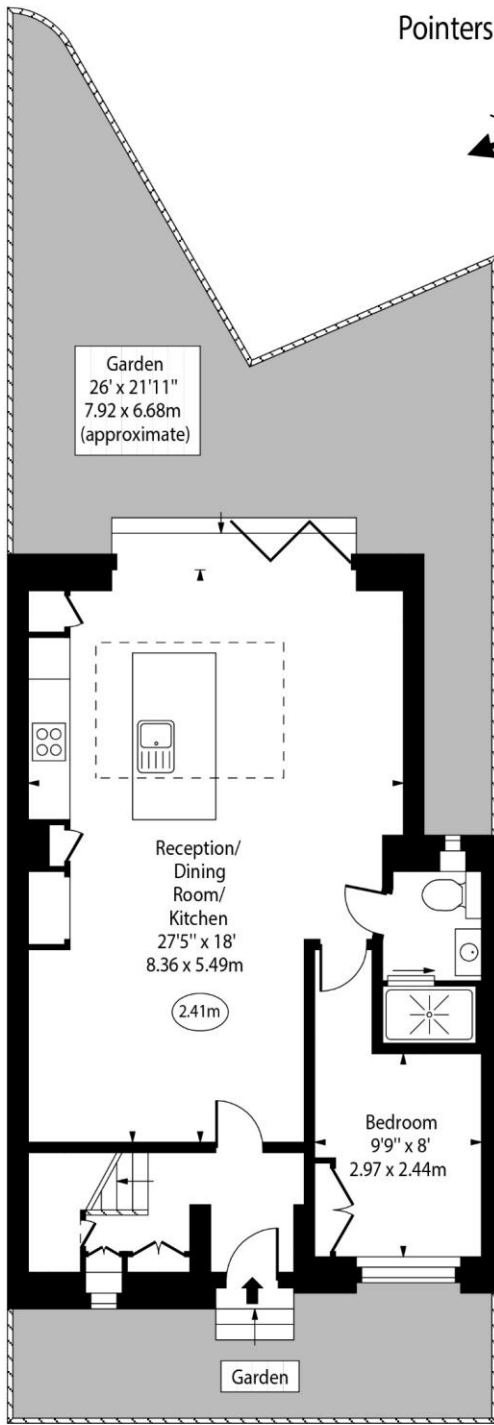
Chestertons Canary Wharf & Greenwich Sales

Harbour Island
 28 Harbour Exchange Square
 London
 E14 9GE
 canarywharf@chestertons.co.uk
 020 7510 8300
 chestertons.co.uk

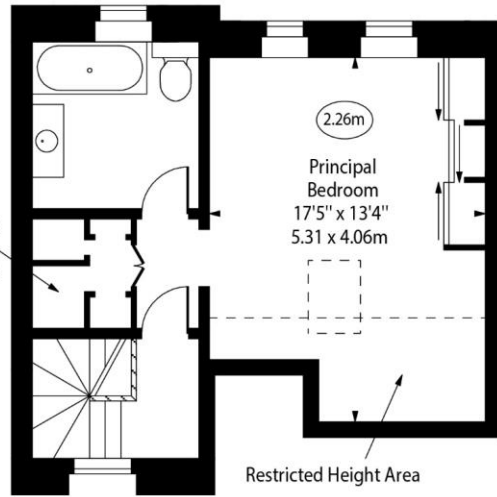
Pointers Close, E14



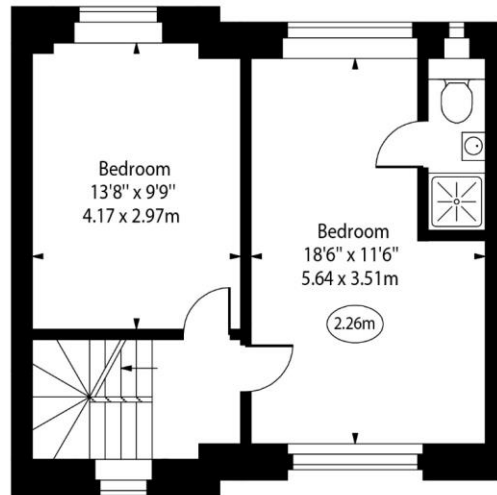
○ - Ceiling Height



Ground Floor



Second Floor



First Floor

Approx Gross Internal Area 1415 Sq Ft - 131.45 Sq M

Approx. Floor Area Including Restricted Heights 1465 Sq Ft - 136.10 Sq M

For Illustration Purposes Only - Not To Scale

www.goldlens.co.uk

Ref. No. 021862K

Chesterton Global Ltd trading as Chestertons for themselves and for the vendor of this property whose agents they are, give notice that (i) these particulars do not constitute any part of an offer or contract, (ii) all statements contained within these particulars are made without responsibility on the part of Chestertons or the vendor, (iii) whilst made in good faith, none of the statements contained within these particulars are to be relied upon as a statement or representation of fact, (iv) any intending purchasers must satisfy themselves by inspection or otherwise as to the correctness of each of the statements contained within these particulars, (v) the vendor does not make or give either Chestertons or any person in their employment any authority to make or give representation or warranty whatsoever in relation to this property. Wide angle lenses may be used. ©Copyright Chestertons | Chesterton Global Ltd | Registered Office 40 Connaught Street, Hyde Park, London W2 2AB Registered Company Number 05334580.



This paper is 100% recyclable