



Landmark East Tower

24 Marsh Wall, E14

Asking Price £1,350,000

A 37th floor 3 bedroom 2 bathroom apartment with balcony & floor-to-ceiling windows throughout in the extremely well-located Landmark East Tower development, very close to Canary Wharf. Facilities inc. 24hr concierge & residents' gym. Underground parking is included, & the property is offered chain-free.



Landmark East Tower

24 Marsh Wall, E14

- 1478sq ft 37th floor 3 bedroom 2 bathroom apartment with balcony.
- South-facing; floor-to-ceiling windows.
- Towering views over the Isle of Dogs & River Thames.
- 24hr concierge; residents' gym on-site.
- Exceptional location close to Canary Wharf.
- Underground parking; offered chain-free.



A superb, South-facing 1478sq ft 37th floor 3 bedroom 2 bathroom apartment in the ever-popular Landmark East Tower development at the top of Westferry Road, located exceptionally close to Canary Wharf. The property boasts floor-to-ceiling windows throughout the reception room, offering an abundance of natural light, a South-facing balcony offering far-reaching views over the Isle of Dogs, & River Thames.

Landmark East Tower offers 24 hour concierge service & residents' gym, as well as an enviable location close to the shops, bars, restaurants, & business district of Canary Wharf. Nearby transport links are exceptional & include: the Canary Wharf pier (for Uberboat/Thames Clipper service), Canary Wharf Jubilee Line, & Elizabeth Line, & Heron Quays DLR stations, all within 500-1200m of the development, approximately. The property comes with an underground parking space.

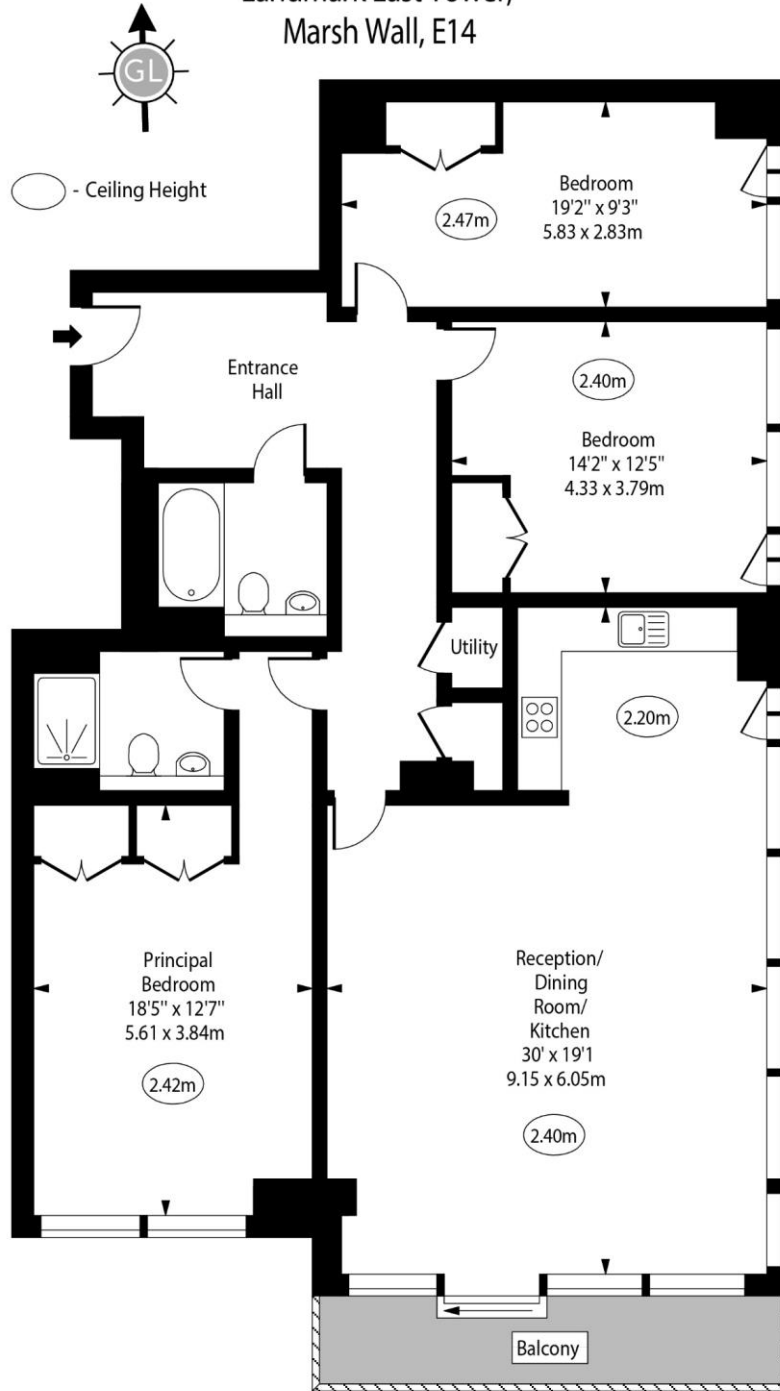
Offered chain-free.

Tenure:	Leasehold – 983 years remaining approx.
Service Charge:	£10,727pa approx.
Ground Rent:	£850pa
Local Authority:	Tower Hamlets
Council Tax Band:	G

Chestertons Canary Wharf & Greenwich Sales

Harbour Island
28 Harbour Exchange Square
London
E14 9GE
sales.docklands@chestertons.com
020 7510 8300
chestertons.com

Landmark East Tower,
Marsh Wall, E14



Thirty Seventh Floor

Approx Gross Internal Area 1478 Sq Ft - 137.31 Sq M

For Illustration Purposes Only - Not To Scale
www.goldlens.co.uk
 Ref. No. 018524R