

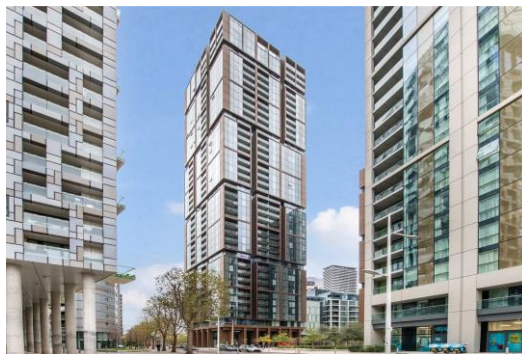


Maine Tower

9 Harbour Way, E14

Offers in Excess of
£595,000

A luxury 635 sq. ft. one bedroom apartment with a west facing private balcony, situated on the tenth floor in the highly desired Maine Tower. The development is superbly located just 0.2 miles from South Quay DLR and 0.5 miles from Canary Wharf.



Maine Tower

9 Harbour Way, E14

- Luxury One Bedroom in Maine Tower.
- Superb South Quay Location.
- Private Balcony.
- Tenth Floor.
- Comfort Cooling.
- SMEG Appliances.
- Residents Cinema and Business Lounge.



A luxurious and spacious one-bedroom apartment, spanning 635 sq.ft with a west facing private balcony, situated on the tenth floor in the highly desired Maine Tower, superbly located in the heart of South Quay. The bright open-plan living room has ceiling to floor windows letting in plenty of light. The kitchen is fitted with engineered stone worktops and SMEG built-in appliances including microwave and dishwasher and instant boiling water with the addition a cooker tap.

The south facing bedroom offers plenty of natural light, is carpeted throughout, and has plenty of built-in wardrobe space. Features include comfort cooling, USB sockets and light dimmer switches are present throughout the property.

The development is superbly located in the heart of South Quay 0.2 miles from South Quay DLR and 0.5 miles from Canary Wharf Jubilee Line and Crossrail. Onsite amenities include 24 hour concierge, a residents lounge, Cinema, games room and business centre.

Tenure: Leasehold - 992 years remaining approx.
Service Charge: £3,529pa approx.
Ground Rent: £350
Local Authority: Tower Hamlets
Council Tax Band: E

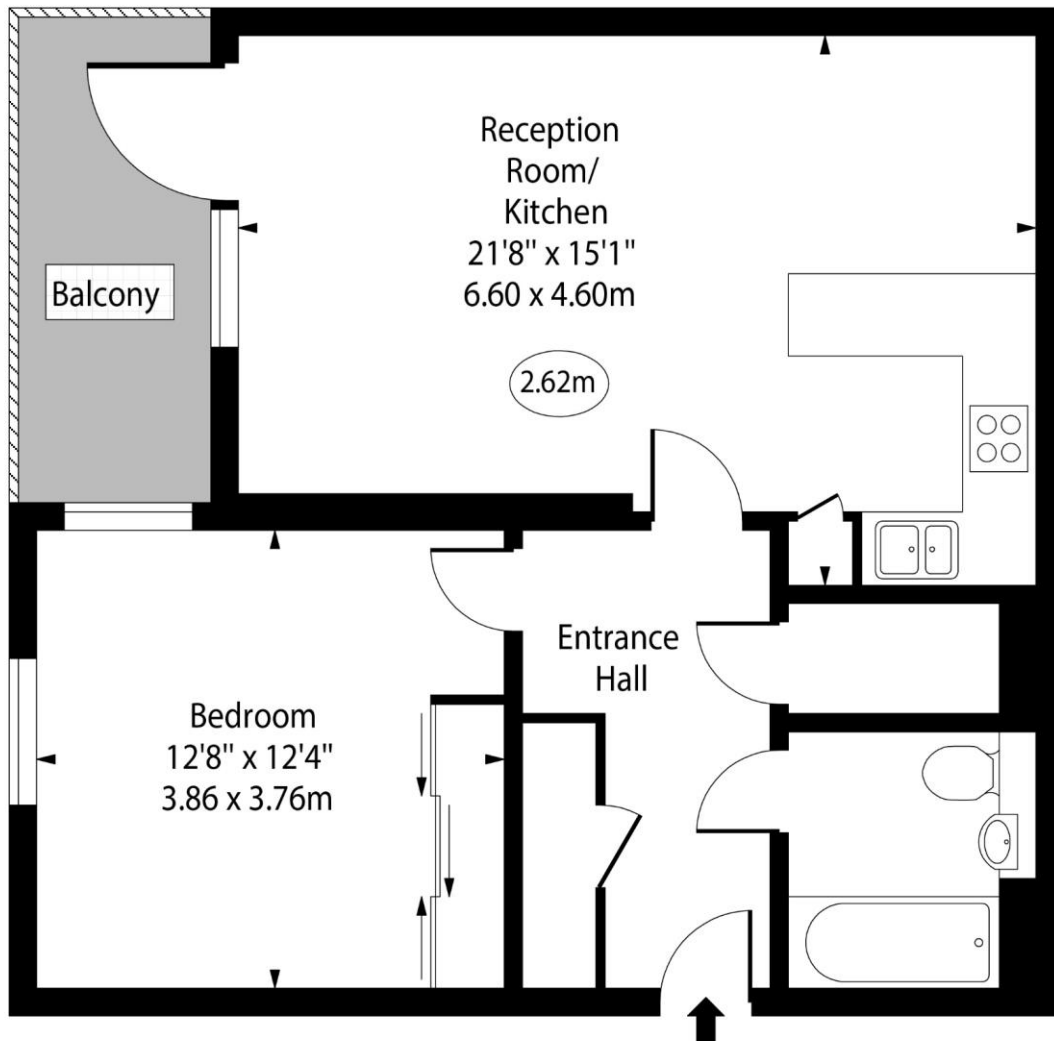
Energy Efficiency Rating		
	Current	Potential
Very energy efficient - lower running costs		
(92-100) A		
(81-91) B	86	86
(69-80) C		
(55-68) D		
(39-54) E		
(21-38) F		
(1-20) G		
Not energy efficient - higher running costs		
England, Scotland & Wales EU Directive 2002/91/EC		

Chestertons Canary Wharf & Greenwich Sales

Harbour Island
 28 Harbour Exchange Square
 London
 E14 9GE
sales.docklands@chestertons.com
 020 7510 8300
chestertons.com

Maine Tower, Harbour Way, E14

○ - Ceiling Height



Tenth Floor

Approx Gross Internal Area 635 Sq Ft - 58.99 Sq M

For Illustration Purposes Only - Not To Scale

www.goldlens.co.uk

Ref. No. 019286E

