



Ontario Tower

4 Fairmont Avenue, E14

Asking Price £290,000

A 374sq ft, West-facing 16th floor studio/suite apartment in Ontario Tower at New Providence Wharf. The property boasts high-quality fixtures & fittings, & views towards Canary Wharf. Located close to Blackwall DLR station. Offered chain-free.



Ontario Tower

4 Fairmont Avenue, E14

- Premier residential development.
- Excellent facilities inc. gym & 25m swimming pool.
- 24 hour concierge.
- Chain free.



A 374sq ft, West-facing 16th floor studio/suite apartment in Ontario Tower at New Providence Wharf. The property boasts high-quality fixtures & fittings, & views towards Canary Wharf. Located close to Blackwall DLR station.

Ontario Tower benefits from striking architecture by renowned architects Skidmore Owings & Merrill, & was built by Ballymore Properties, completed in 2007. The building benefits from 24 hour concierge, a sizeable residents' gym, & 25 metre swimming pool, as well as 24 hour site security. The development is located within 200m of Blackwall DLR station & within 800m of the forthcoming Elizabeth Line (formerly Crossrail) station at Canary Wharf.

Offered chain-free.

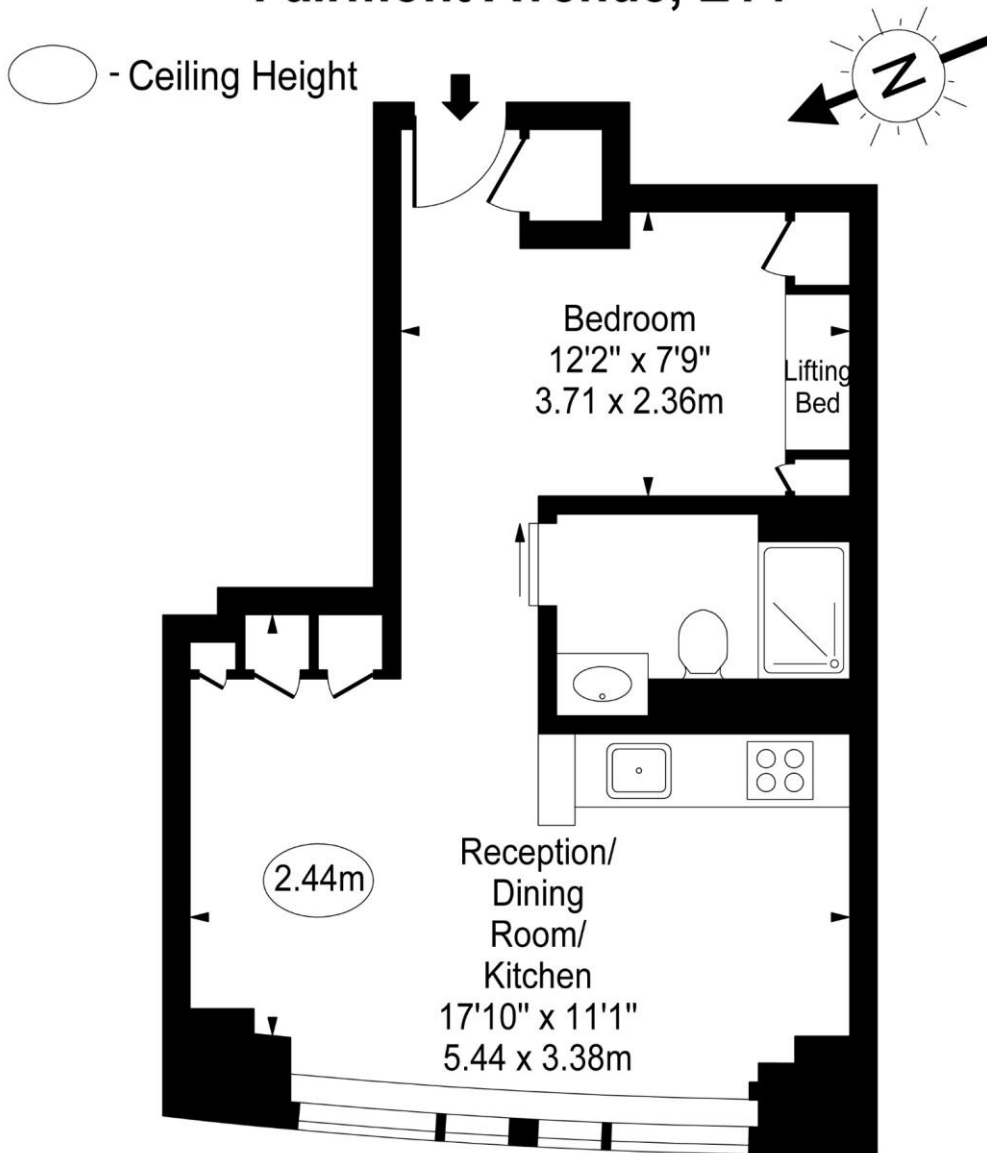
Tenure: Leasehold – 977 years remaining approx.
Service Charge: £5,072pa approx
Ground Rent: £300pa
Local Authority: Tower Hamlets
Council Tax Band: D

Energy Efficiency Rating		Current	Potential
Most energy efficient – lower running costs			
(92-100)	A		
(81-91)	B		
(69-80)	C	72	75
(55-68)	D		
(39-54)	E		
(21-38)	F		
(1-20)	G		
Not energy efficient – higher running costs			
England, Scotland & Wales		EU Directive 2002/91/EC	

Chestertons Canary Wharf & Greenwich Sales

Harbour Island
 28 Harbour Exchange Square
 London
 E14 9GE
 sales.docklands@chestertons.co.uk
 020 7510 8300
 chestertons.co.uk

Ontario Tower, Fairmont Avenue, E14



Sixteenth Floor

Approx Gross Internal Area **374 Sq Ft - 34.74 Sq M**

For Illustration Purposes Only - Not To Scale

www.goldlens.co.uk

Ref. No. 015864E

