



Aegean Apartments

19 Western Gateway, E16

Asking Price £635,000

A well-presented two bedroom apartment in Aegean Apartments, part of the popular Capital East development. The development benefits from 24hr concierge and residents gym. Transport links include Royal Victoria and Custom House DLR and Elizabeth Line.



Aegean Apartments

19 Western Gateway, E16

- Large two bedroom apartment
- 1053 sq ft of internal space
- Two bathrooms
- Private balcony with South facing dock views
- 24hr concierge
- Residents gym
- Lease- 134 years
- Service charge-£7,000pa approx.
- Ground Rent- £250



A well-presented two bedroom flat in Aegean Apartments, part of the popular Capital East development E16. Accommodation is comprised of a large reception room opening onto a private balcony with river views. There is a separate kitchen, two double bedrooms and two bathrooms. The development benefits from 24hr concierge and residents gym.

The dockside location benefits from restaurants, two floating hotels and water sports centre.

Aegean Apartments is superbly located for transportation links with Royal Victoria DLR and Custom House DLR and Elizabeth Line on your doorstep! The Emirates Cable Car, Canning Town, Jubilee Line is also nearby.

Tenure:	Leasehold – 134 years remaining approx.
Service Charge:	£7,000pa approx.
Ground Rent:	£250pa
Local Authority:	Newham
Council Tax Band:	F

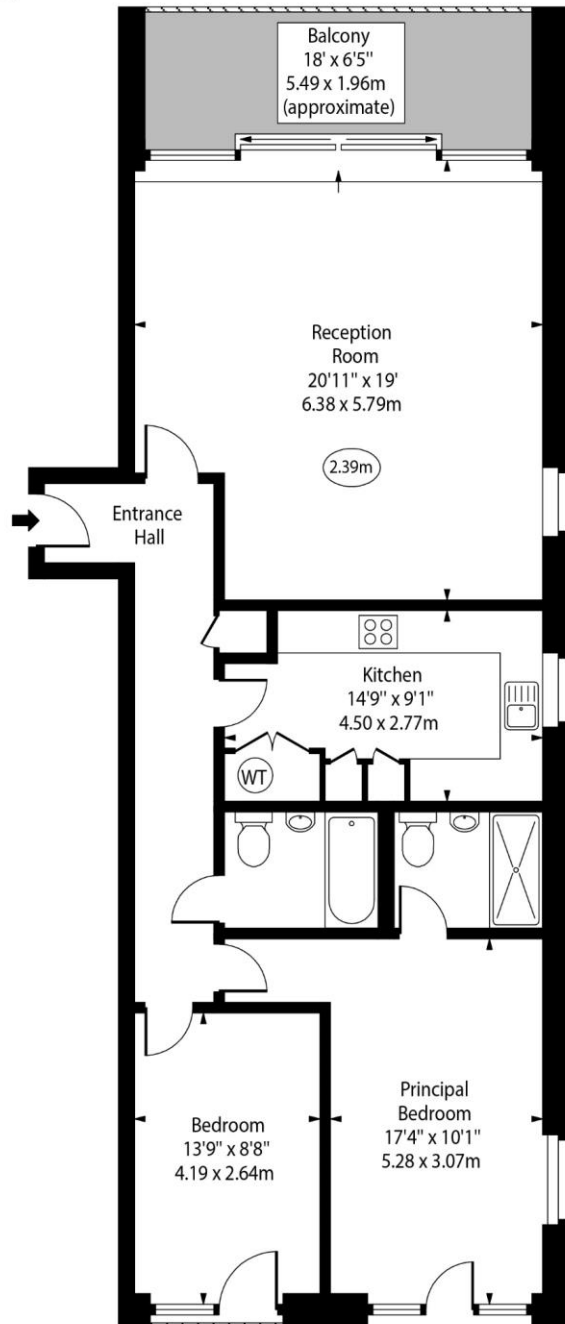
Energy Efficiency Rating		
	Current	Potential
Very energy efficient - lower running costs		
A (94-100)		
B (81-93)		82
C (69-80)		
D (55-68)	68	
E (39-54)		
F (21-38)		
Not energy efficient - higher running costs		
G (1-20)		
England, Scotland & Wales EU Directive 2002/91/EC		

Chestertons Canary Wharf & Greenwich Sales

Harbour Island
28 Harbour Exchange Square
London
E14 9GE
sales.docklands@chestertons.co.uk
020 7510 8300
chestertons.co.uk

Aegean Apartments, Western Gateway, E16

○ - Ceiling Height



Fourth Floor

Approx Gross Internal Area 1053 Sq Ft - 97.82 Sq M

For Illustration Purposes Only - Not To Scale
www.goldlens.co.uk
Ref. No. 020094.1K

