



Ringwood Gardens

London, E14

Offers in excess of
£290,000

A light and bright spacious studio apartment in excellent order throughout. Set on the third floor of this small private riverside development in this quiet cul de sac in the heart of the Isle of Dogs, London E14.

CHESTERTONS



Ringwood Gardens

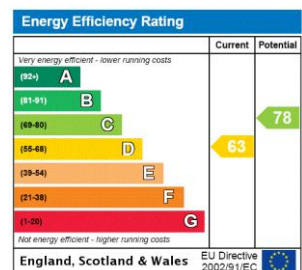
London, E14

- Well Presented Studio
- Riverside Development in Isle of Dogs
- Residents Parking.
- Close to Thames Path and River Thames.
- EWS1 Compliant.
- Third Floor.



A light and bright spacious studio apartment in excellent order throughout. Set on the third floor of this small private riverside development in this quiet cul de sac in the heart of the Isle of Dogs, London E14. Ringwood Gardens is superbly positioned for access to Canary Wharf and is minutes nearby transport links such as Mudchute and Crossharbour DLR stations are within easy walking distance. Allocated parking is also included making this an excellent first time buy or rental investment. Ringwood Gardens offers private parking for residents.

Tenure: Leasehold - 95 years remaining approx.
Service Charge: £1,520pa approx.
Ground Rent: £180pa
Local Authority: Tower Hamlets
Council Tax Band: B

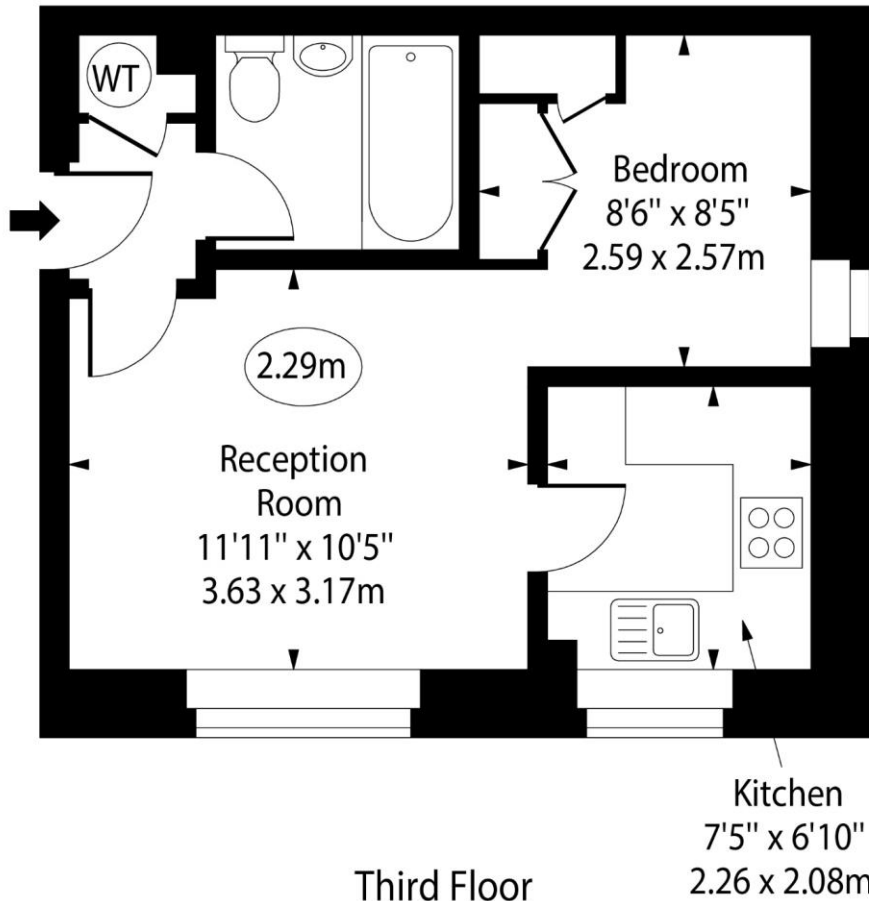


Chestertons Canary Wharf & Greenwich Sales

Harbour Island
 28 Harbour Exchange Square
 London
 E14 9GE
 sales.docklands@chestertons.co.uk
 020 7510 8300
 chestertons.co.uk

Ringwood Gardens, E14

○ - Ceiling Height



Third Floor

Approx Gross Internal Area 304 Sq Ft - 28.24 Sq M

For Illustration Purposes Only - Not To Scale

www.goldlens.co.uk

Ref. No. 018635K

