



Chiswick High Road  
London, W4

CHESTERTONS









This extremely spacious second-floor apartment offers over 1,000 sq. ft. of well-designed accommodation, perfect for modern living. Situated in a sought-after purpose-built block, the property benefits from lift access, allocated underground parking, and CCTV for added security and convenience.

The apartment features a large open-plan reception and dining area, two generously sized double bedrooms, and two modern bathrooms (including an en-suite to the principal bedroom). With its contemporary style, abundance of natural light, and ample storage, this property provides a comfortable and secure lifestyle.

Ideally located close to local amenities and transport links, this apartment is an excellent choice for professionals and families alike. miles away from Gunnersbury Tube Station and Chiswick Business Park, and 0.4 miles away from the shopping and transport facilities of the High Road.

- Second Floor Purpose Built Flat
- Two Double Bedroom
- Large Open Plan Reception/Kitchen
- Two Bathrooms
- Two South Facing Balconies
- Close to both Chiswick Park and Gunnersbury

Asking Price £700,000

Energy Efficiency Rating		Current	Potential
92-100	A		
81-91	B		
69-80	C		
55-68	D		
49-54	E		
45-48	F		
35-39	G		
Not energy efficient - higher running costs			
England, Scotland & Wales			
			EU Directive 2002/91/EC

**Tenure:** Leasehold 124 years (150 years from 29 September 1999)

**Service Charge:** £5125.8 Cleaning, maintenance of building

**Ground Rent:** £150 for the first 33 years, rising to £250 for years 34-65, rising to £450 for years 66-99, rising to £800 thereafter

**Local Authority:** London Borough of Hounslow

**Council Tax Band:** F

**Chestertons Chiswick Sales**

155 Chiswick High Road

Chiswick

London

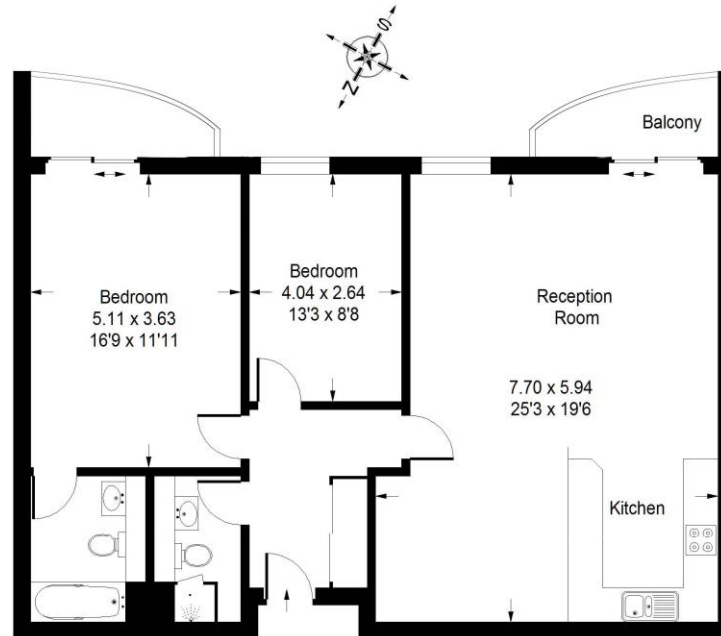
W4 2DT

chiswick@chestertons.co.uk

020 8995 3443

## Chiswick High Road, W4

Approx. Gross Internal Area :-  
93 sq m / 1001 sq ft



### Second Floor

Whilst every attempt has been made to ensure the accuracy of the floor plan, measurements are approximate and not to scale.  
No guarantee is given on the total square footage of the property quoted on the plan. Figures given are for guidance.  
Plan is for illustration purposes only.

Chesterton UK Services Limited trading as Chestertons for themselves and for the vendor of this property whose agents they are, give notice that (i) these particulars do not constitute any part of an offer or contract, (ii) all statements contained within these particulars are made without responsibility on the part of Chestertons or the vendor, (iii) whilst made in good faith, none of the statements contained within these particulars are to be relied upon as a statement or representation of fact, (iv) any intending purchasers must satisfy themselves by inspection or otherwise as to the correctness of each of the statements contained within these particulars, (v) the vendor does not make or give either Chestertons or any person in their employment any authority to make or give representation or warranty whatsoever in relation to this property. Wide angle lenses may be used. ©Copyright Chestertons | Chesterton UK Services Limited | Registered Office 40 Connaught Street, Hyde Park, London W2 2AB Registered Company Number 05334580.

