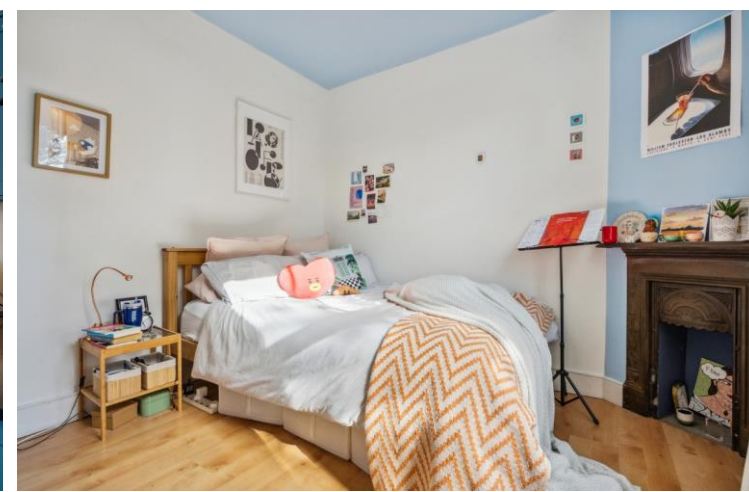




South Parade
London, W4

CHESTERTONS





This flat is in the heart of Chiswick, where modern living meets comfort and convenience. This beautifully presented 3-bedroom duplex flat offer spacious living across two levels, making it the perfect for families or professionals seeking a blend of style and functionality.

****Key Features:****

- ****Spacious Interior:**** The open-plan living area boasts large windows that flood the space with natural light, creating a warm and inviting atmosphere. The well-proportioned lounge is perfect for relaxation or entertaining guests.

- ****Three Generously Sized Bedrooms:**** The upper level houses three well-appointed bedrooms, each offering comfortable living space.

- ****Stylish Bathrooms:**** The flat is complemented by modern bathrooms that feature elegant fittings and fixtures, ensuring a spa-like experience at home.

- ****Private Outdoor Space:**** Step outside to enjoy your private balcony or garden area, perfect for alfresco dining or relaxing with a book.

- ****Prime Location:**** Situated in the desirable Chiswick area, you are just a stone's throw away from a range of amenities including boutique shops, cafes, and

- Three bedrooms
- Fitted Kitchen Area
- Bathroom
- Split-level
- South Facing Reception Room
- Close to both Chiswick Park and Turnham Green

Asking Price £650,000

Energy Efficiency Rating		Current	Potential
90-100	A		
81-89	B		
69-80	C		74
55-68	D	53	
39-54	E		
21-38	F		
1-20	G		

Not energy efficient - higher running costs

England, Scotland & Wales EU Directive 2002/91/EC

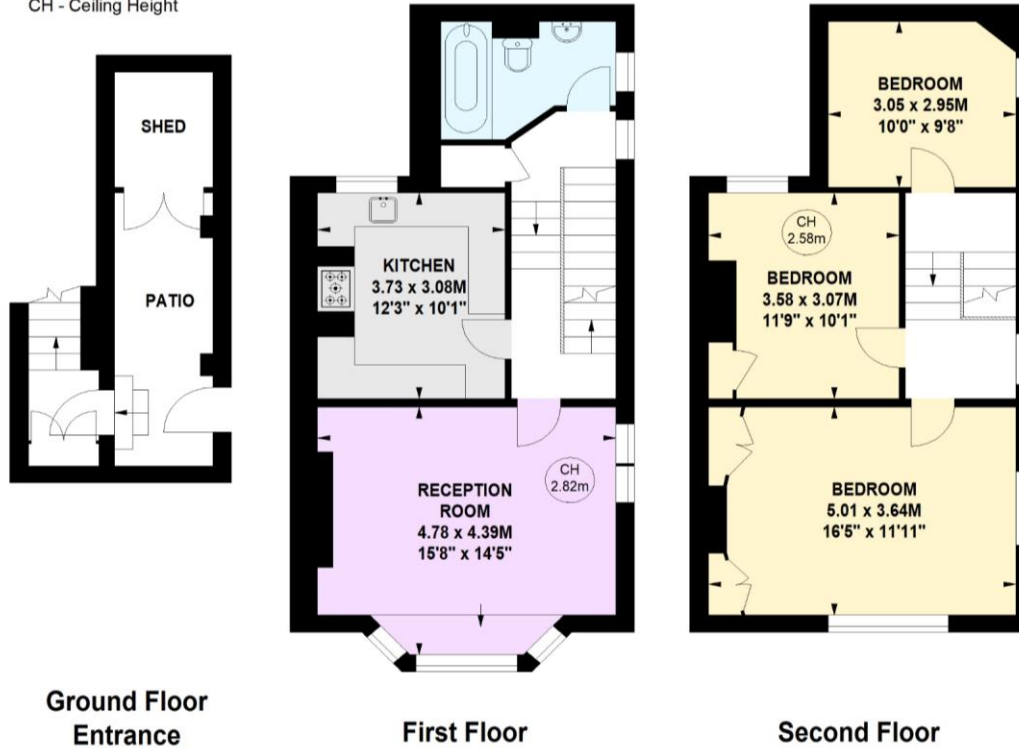
Tenure: Leasehold
Service Charge: TBC
Ground Rent: £100
Local Authority: London Borough Of Ealing
Council Tax Band: C

Chestertons Chiswick Sales
 155 Chiswick High Road
 Chiswick
 London
 W4 2DT
 chiswick@chestertons.co.uk
 020 8995 3443

South Parade, W4
 Approximate gross internal area
 96.72 sq m / 1041 sq ft



Key :
 CH - Ceiling Height



Not to scale, for guidance only and must not be relied upon as a statement of fact.
 All measurements and areas are approximate only

Chesterton UK Services Limited trading as Chestertons for themselves and for the vendor of this property whose agents they are, give notice that (i) these particulars do not constitute any part of an offer or contract, (ii) all statements contained within these particulars are made without responsibility on the part of Chestertons or the vendor, (iii) whilst made in good faith, none of the statements contained within these particulars are to be relied upon as a statement or representation of fact, (iv) any intending purchasers must satisfy themselves by inspection or otherwise as to the correctness of each of the statements contained within these particulars, (v) the vendor does not make or give either Chestertons or any person in their employment any authority to make or give representation or warranty whatsoever in relation to this property. Wide angle lenses may be used. ©Copyright Chestertons | Chesterton UK Services Limited | Registered Office 40 Connaught Street, Hyde Park, London W2 2AB Registered Company Number 05334580.



This paper is
 100% recyclable