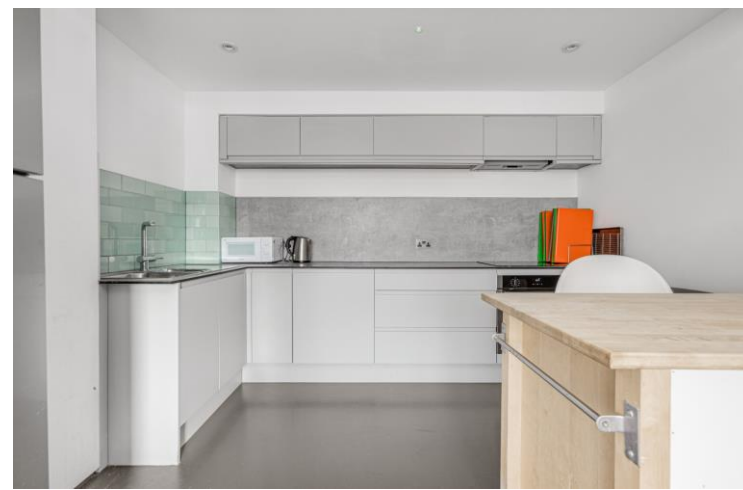




Warple Mews
Warple Way, W3





Warple Mews is an attractive gated mews off Warple Way, a vibrant mixed use area close to the Factory Quarter development with shops, restaurants and cafes nearby on the Vale and Uxbridge Road. Turnham Green Underground Station and Acton Central Overground Station are within walking distance and the A4020 provides excellent links to the West End and motorway network.

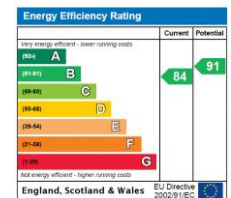
A very spacious modern build, three bedroom mews house set over three floors with a stylish and impressive roof terrace on the top floor. The property has large rooms and ample living space. Warple Mews is ideally located between Acton, Chiswick and Shepherd's Bush.

The house has a South-facing aspect and allocated parking.

There has been a recent high-spec refurbishment throughout and the property is beautifully finished and presented.

- Gated mews development
- Three bedrooms
- Stylish and impressive roof terrace
- Parking
- Spacious living accommodation
- Close to Acton, Chiswick and Shepherds Bush

Asking Price £1,175,000



Tenure: Freehold

Service Charge:

Ground Rent:

Local Authority: London Borough Of Ealing

Council Tax Band: TBC

Chestertons Chiswick Sales

155 Chiswick High Road

Chiswick

London

W4 2DT

chiswick@chestertons.co.uk

020 8995 3443

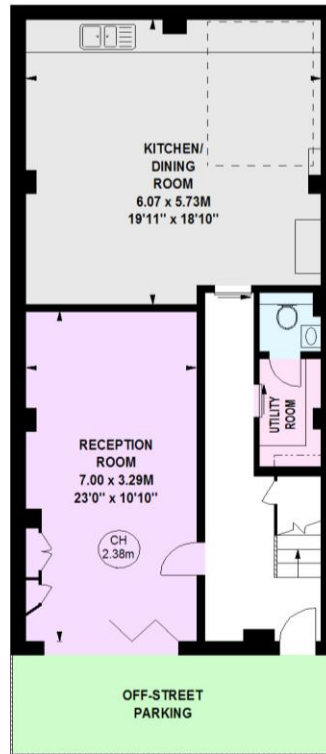
Warple Mews, W3

Approximate gross internal area

169.54 sq m / 1825 sq ft



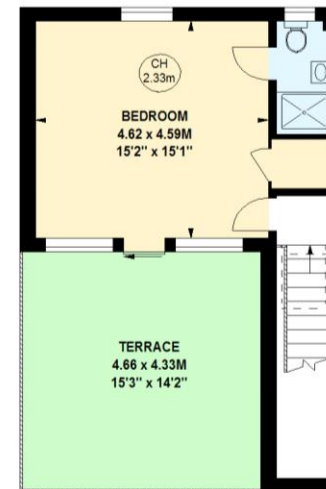
Key :
CH - Ceiling Height



810 sq ft
Ground Floor



708 sq ft
First Floor



307 sq ft
Second Floor

This floor plan is a representation for guidance purposes only, not for valuation.
Any figure is approximate and must not be relied on as a statement of fact.
Copyright of Wyatt Dixon Homes



Chesterton Global Ltd trading as Chestertons for themselves and for the vendor of this property whose agents they are, give notice that (i) these particulars do not constitute any part of an offer or contract, (ii) all statements contained within these particulars are made without responsibility on the part of Chestertons or the vendor, (iii) whilst made in good faith, none of the statements contained within these particulars are to be relied upon as a statement or representation of fact, (iv) any intending purchasers must satisfy themselves by inspection or otherwise as to the correctness of each of the statements contained within these particulars, (v) the vendor does not make or give either Chestertons or any person in their employment any authority to make or give representation or warranty whatsoever in relation to this property. Wide angle lenses may be used. ©Copyright Chestertons | Chesterton Global Ltd | Registered Office 40 Connaught Street, Hyde Park, London W2 2AB Registered Company Number 05334580.



This paper is
100% recyclable