



Laurel Road
Barnes, SW13

CHESTERTONS





A unique and architecturally designed house located in this idyllic position on the south side of Laurel Road, adjacent to Beverley Brook. This seven bedroom, detached house boasts lovely views across Barnes Common, off street parking for several cars, a beautiful garden and approximately 4880 sq ft of internal space.

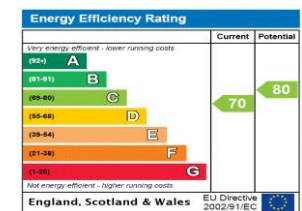
Originally two houses that have been remodelled to create one spacious property with amazing lateral living space and comprising seven bedrooms, five bathrooms and several multifunctional living areas. The ground floor offers a full width rear reception room, incorporating a dining area and high specification Bulthaup kitchen with large island. There are wonderful floor to ceiling and full width glass doors leading onto the garden, which has a tiled area for seating and a meticulously landscaped lawn, with mature planted borders and a further seating area. There is a front reception room, a study / library, a guest cloakroom, a utility room and a second kitchen.

The first floor comprises six double bedrooms, two modern bathrooms, a front living room and a generous terrace which is accessed from two bedrooms and looks over the garden and beyond onto the common. The entire second floor houses the main bedroom suite with two bathrooms, dressing area, walk in wardrobe, fitted wardrobes and plenty of eaves storage, as well as fabulous views.

Overall, this unique detached house with stunning garden is a perfect blend of modern design, natural beauty, and luxurious living. It offers a peaceful retreat from the hustle and bustle of everyday life, while still being conveniently located near amenities and attractions of Barnes village and local transport links.

- A Unique and Beautifully Designed Detached House
- Prime Barnes Village Road Adjacent to Beverley Brook
- 7 Bedrooms and 5 Bathrooms
- Stunning Garden and Large Terrace
- Views Over Barnes Common
- Off Street Parking
- Chain Free

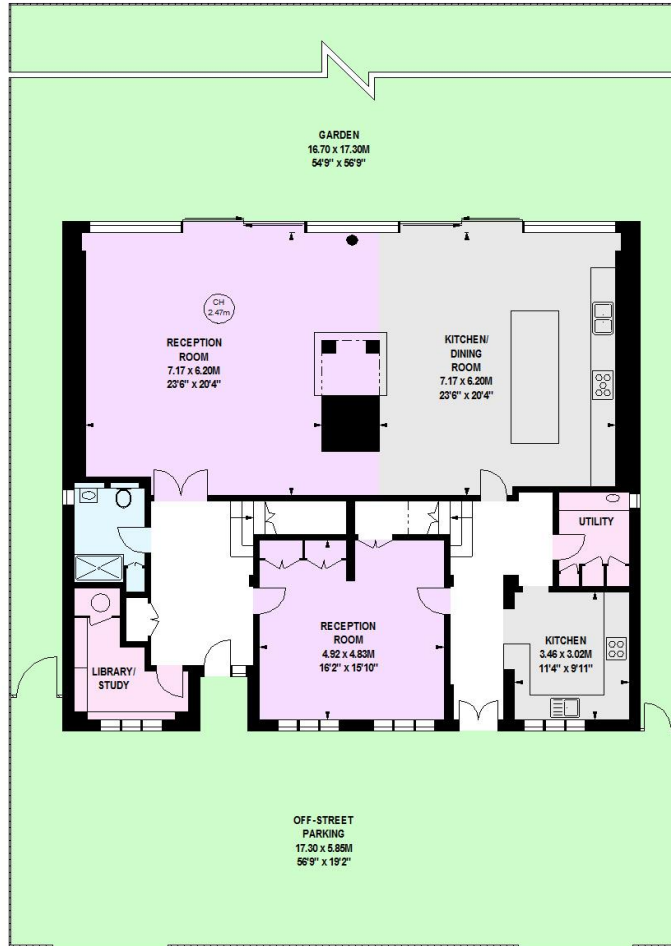
Asking Price
£4,750,000



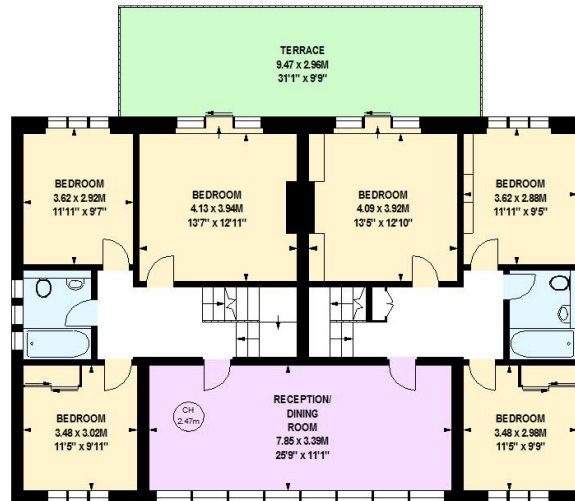
Tenure: Freehold
Service Charge: £0
EPC Rating: C
Local Authority: London Borough Of Richmond Upon Thames
Council Tax Band: G x 2

Chestertons Barnes Village Sales

68-69 Barnes High Street
 Barnes
 London
 SW13 9LD
 barnes@chestertons.co.uk
 020 8748 8833



1984 sq ft
Ground Floor



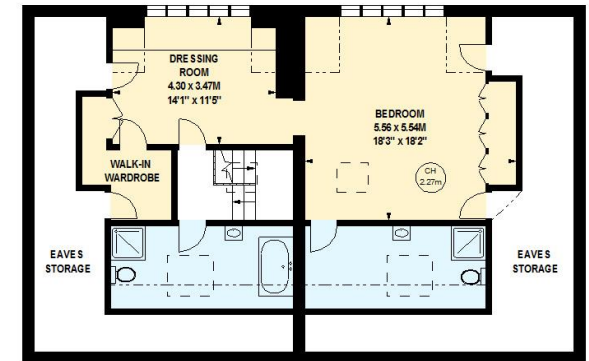
1528 sq ft
First Floor

Laurel Road, SW13

Approximate gross internal area
453.35 sq m / 4880 sq ft
(Including Eaves Storage)
Eaves Storage
45.99 sq m / 495 sq ft



Key:
CH - Ceiling Height



873 sq ft
Second Floor

This floor plan is a representation for guidance purposes only, not for valuation.
Any figure is approximate and must not be relied on as a statement of fact.
Copyright of Wyatt Dixon Homes



Chesterton Global Ltd trading as Chestertons for themselves and for the vendor of this property whose agents they are, give notice that (i) these particulars do not constitute any part of an offer or contract, (ii) all statements contained within these particulars are made without responsibility on the part of Chestertons or the vendor, (iii) whilst made in good faith, none of the statements contained within these particulars are to be relied upon as a statement or representation of fact, (iv) any intending purchasers must satisfy themselves by inspection or otherwise as to the correctness of each of the statements contained within these particulars, (v) the vendor does not make or give either Chestertons or any person in their employment any authority to make or give representation or warranty whatsoever in relation to this property. Wide angle lenses may be used. ©Copyright Chestertons | Chesterton Global Ltd | Registered Office 40 Connaught Street, Hyde Park, London W2 2AB Registered Company Number 05334580.



This paper is
100% recyclable