



Riverview Gardens

Barnes, SW13

Guide Price
£1,250,000

A rarely available ground floor mansion flat in the prestigious Riverview Gardens, Barnes. This spacious three bedroom apartment boasts direct views towards the river Thames and has direct access to beautiful communal gardens and a patio area.

Comprising a wide entrance hall with double doors through to a generous reception room, a double bedroom with en-suite shower room, two further bedrooms, a family bathroom and hallway with storage. To the rear is a bright open plan kitchen / reception room with central island and access to the outside space.

Riverview Gardens is a wonderful mansion block in Barnes with beautifully manicured communal gardens, a resident porter and is located just off Castelnau, next to Hammersmith Bridge.

Barnes is a small community with a beautiful village at its heart. The village perfectly balances city and country living thanks to its easy London transport links and the green spaces of Barnes common, Barnes green with its famous duck pond, the London wetland centre and the world famous Richmond Park close-by. An ideal location for families, the area has outstanding state and private school options, including St Pauls boys and juniors school, the Harrodian, the Swedish school, St. Osmonds, Barnes and Lowther primary schools. You will find everyday amenities such as dry cleaning, small supermarkets and coffee spots on your doorstep alongside a selection of pubs, cafes, delis and restaurants. Local favourites include Alma cafe, the Red Lion pub and Church Road restaurant. Barnes village also holds a farmers market every Saturday. For the sports enthusiasts, The Riverside Health Club is just across Barnes Bridge while Rocks Lane offers a wide range of sporting activities.

Hammersmith Station is the closet transport hub, with four underground rail lines (Hammersmith Bridge currently open to foot traffic). Nearby mainline stations, for regular routes into London Waterloo and out of London, are Barnes and Barnes Bridge.

CHESTERTONS



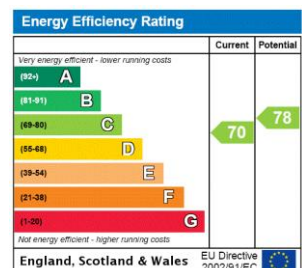
Riverview Gardens

Barnes, SW13

- A Rare Ground Floor Riverside Mansion Flat
- Well regarded Riverview Gardens
- Direct Access to Communal Gardens and Patio
- 3 Bedrooms and 2 Bathrooms
- Chain Free
- EPC Rating C



Tenure: Share of Freehold with Lease of 983 years remaining
Service Charge: £6202 p.a Inc Insurance, cleaning, rubbish removal, porter, gardening & reserve
Ground Rent: £0
Local Authority: London Borough Of Richmond Upon Thames
Council Tax Band: G



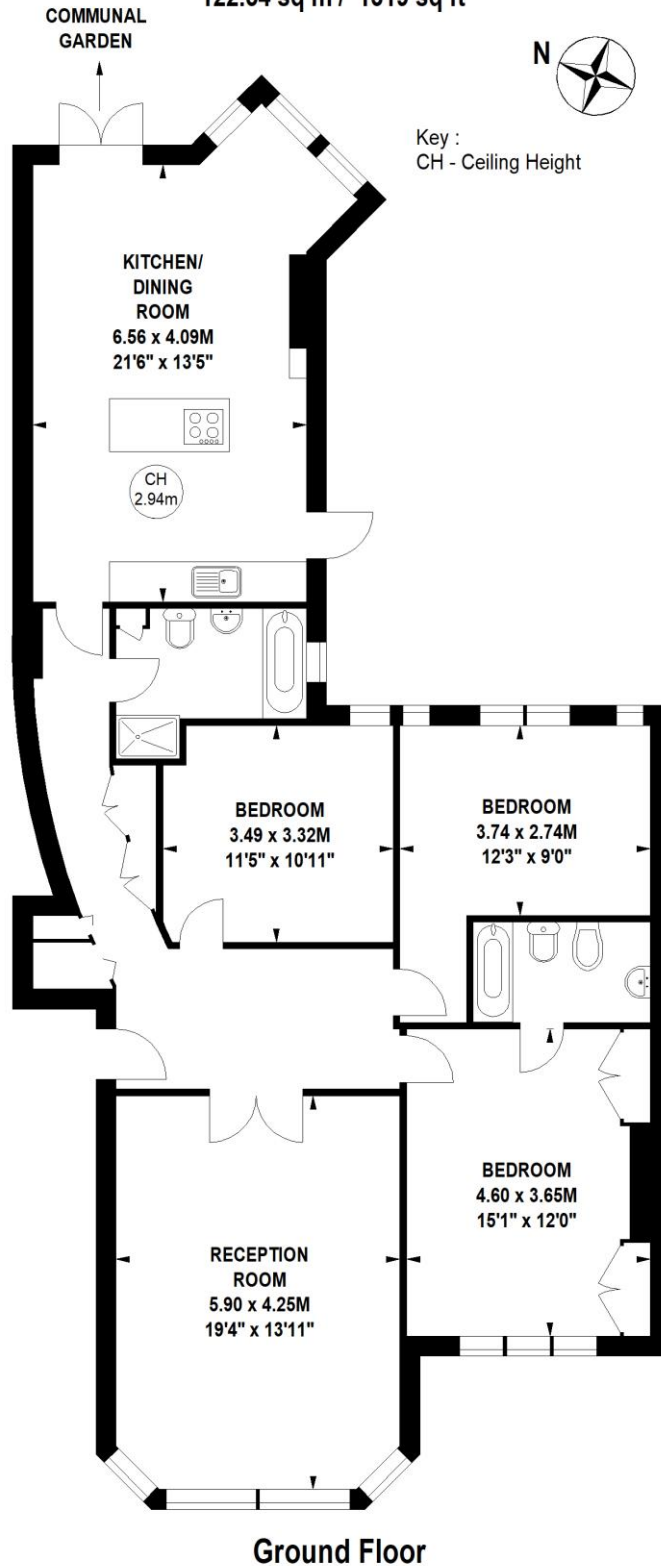
Chestertons Barnes Village Sales

68-69 Barnes High Street
Barnes
London
SW13 9LD
barnes@chestertons.co.uk
020 8748 8833
chestertons.co.uk

Riverview Gardens, SW13

Approximate gross internal area

122.54 sq m / 1319 sq ft



Not to scale, for guidance only and must not be relied upon as a statement of fact.
All measurements and areas are approximate only

Chesterton Global Ltd trading as Chestertons for themselves and for the vendor of this property whose agents they are, give notice that (i) these particulars do not constitute any part of an offer or contract, (ii) all statements contained within these particulars are made without responsibility on the part of Chestertons or the vendor, (iii) whilst made in good faith, none of the statements contained within these particulars are to be relied upon as a statement or representation of fact, (iv) any intending purchasers must satisfy themselves by inspection or otherwise as to the correctness of each of the statements contained within these particulars, (v) the vendor does not make or give either Chestertons or any person in their employment any authority to make or give representation or warranty whatsoever in relation to this property. Wide angle lenses may be used. ©Copyright Chestertons | Chesterton Global Ltd | Registered Office 40 Connaught Street, Hyde Park, London W2 2AB Registered Company Number 05334580.



This paper is
100% recyclable