



Queen Elizabeth Walk
Barnes, SW13





A well-presented semi-detached family home with a garage and driveway, located in the quiet and leafy part of Barnes. The gates to the London Wetlands Centre are a few hundred metres from the house, as is the Thames footpath leading to Putney and Hammersmith. This relatively modern house is arranged over three floors and offers balanced and bright accommodation throughout, with lovely views across Barn Elms playing fields.

The house has recently been redecorated and upgraded and is presented in excellent condition. The ground floor comprises an entrance hall, generous triple-aspect reception room with sliding doors onto the garden, a cloakroom, a stylish modern kitchen and additional breakfast room. On the first floor there are three double bedrooms with built-in wardrobes, two contemporary bathrooms and two balconies. The top floor is occupied by a large double bedroom with a new en-suite bathroom and plenty of eaves storage space.

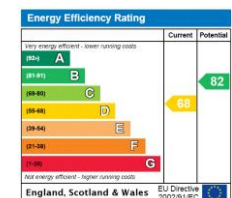
There is a generous rear garden which is private and secluded and has side access from the front of the property. Additional features include two terrace-style balconies at the front and rear of the house, distant views of the London skyline from the top floor rooms.

Queen Elizabeth Walk is a quiet tree-lined cul-de-sac leading to the River Thames from the crossroads at Castelnau, Rocks Lane and Church Road. Convenient transport links are at nearby Barnes and Barnes Bridge stations, which offer frequent services into London Waterloo, with Hammersmith tube station also just across Hammersmith bridge (currently accessible by foot only).

- A Unique Semi-Detached House
- Barnes Village Location
- 4 Bedrooms & 3 Bathrooms
- Garage & Driveway
- Near Barnes Mainline Station
- Historic Planning Permission Granted for rear extension and garage conversion refs - 19/1032/HOT and 02/2918

Asking Price

£2,150,000



Tenure: Freehold

Service Charge: £0

Ground Rent: £0

Local Authority: London Borough Of Richmond Upon Thames

Council Tax Band: G EPC Rating D

Chestertons Barnes Village Sales

68-69 Barnes High Street

Barnes

London

SW13 9LD

barnes@chestertons.co.uk

020 8748 8833

Queen Elizabeth Walk, SW13

Approximate gross internal area
192.40 sq m / 2071 sq ft
 (Including Eaves Storage & Garage)

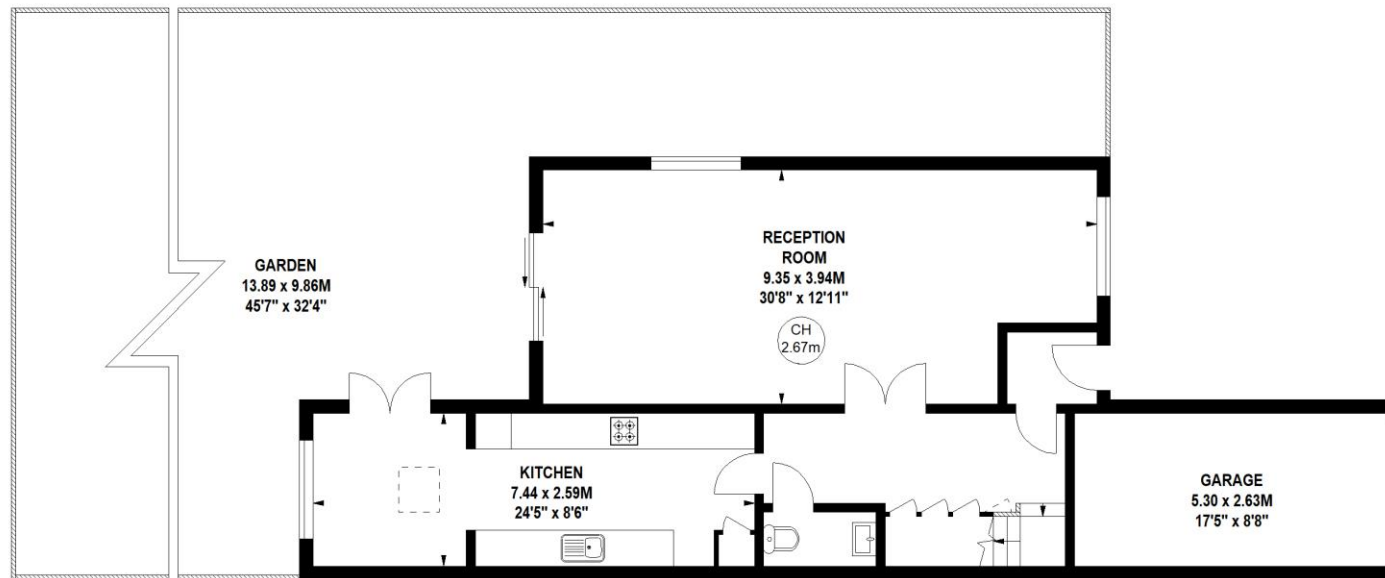
Eaves Storage
 4.27 sq m / 46 sq ft
 Garage
 13.94 sq m / 150 sq ft



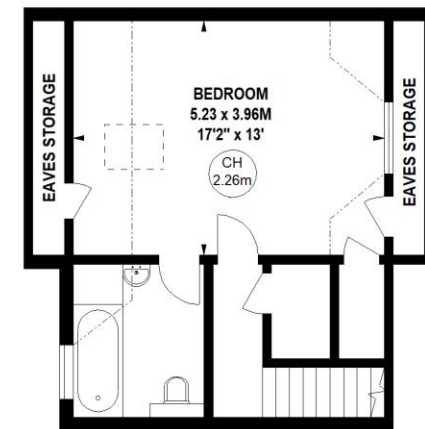
Key :
 CH - Ceiling Height



First Floor



Ground Floor



Second Floor

Not to scale, for guidance only and must not be relied upon as a statement of fact.
 All measurements and areas are approximate only

Chesterton Global Ltd trading as Chestertons for themselves and for the vendor of this property whose agents they are, give notice that (i) these particulars do not constitute any part of an offer or contract, (ii) all statements contained within these particulars are made without responsibility on the part of Chestertons or the vendor, (iii) whilst made in good faith, none of the statements contained within these particulars are to be relied upon as a statement or representation of fact, (iv) any intending purchasers must satisfy themselves by inspection or otherwise as to the correctness of each of the statements contained within these particulars, (v) the vendor does not make or give either Chestertons or any person in their employment any authority to make or give representation or warranty whatsoever in relation to this property. Wide angle lenses may be used. ©Copyright Chestertons | Chesterton Global Ltd | Registered Office 40 Connaught Street, Hyde Park, London W2 2AB Registered Company Number 05334580.



This paper is
 100% recyclable