

Trusted since 1802

HENLEY-ON-THAMES | MARLOW | BASINGSTOKE

**SIMMONS & SONS**



Constable Close, Black Dam

Basingstoke, Hampshire, RG21 3QY

Guide Price £360,000

Freehold

**25 Constable Close  
Black Dam  
Basingstoke  
RG21 3QY**

Detached Two Bedroom Bungalow being offered for sale with No Onward Chain.

- Two Bedrooms
- Kitchen
- Lounge/Diner
- Sun Room
- Bathroom
- Driveway Parking with Single Garage
- Enclosed Rear Garden
- Corner Plot Location
- Some Updating Required
- Council Tax Band D - £1928.56



This detached bungalow would benefit from some internal updating and currently offers hallway, two bedrooms, bathroom, lounge/diner, sun room and kitchen.

**Exterior**

The property occupies a corner plot location within this cul de sac with front lawn area and driveway to single garage and enclosed rear garden.



## Services

Mains electricity, gas and water

## Location / Directions

Satellite Navigation RG21 3QY

## EPC

Rating - D

## Tenure

Freehold

## Council Tax

Tax Band D

## Local Authority

Basingstoke and Deane Borough Council T: 01256 844844

## VIEWINGS - Strictly by appointment with:

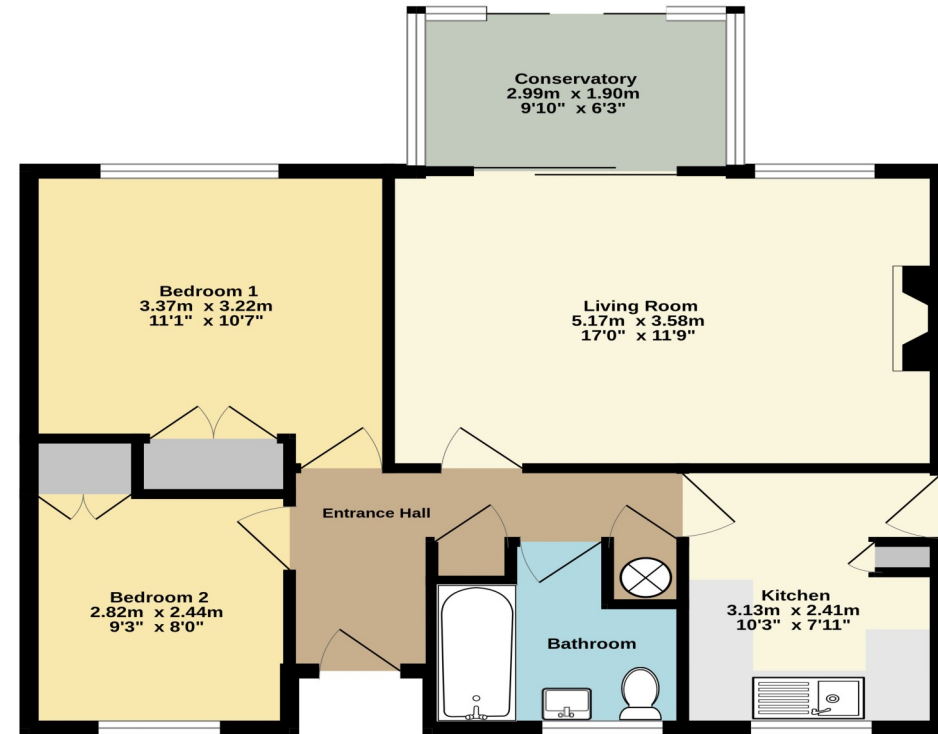
Simmons & Sons

12 Wote Street

Basingstoke

Hants RG21 7NW T: 01256 840077

E: [sales.basingstoke@simmonsandsons.com](mailto:sales.basingstoke@simmonsandsons.com)



TOTAL FLOOR AREA : 61.6 sq.m. (663 sq.ft.) approx.

Simmons & Sons Surveyors LLP for themselves and for the vendors or lessors of the property whose agents they are give notice that: (i) the particulars are produced in good faith, are set out as a general guide only and do not constitute any part of a contract or offer; (ii) all descriptions, dimensions, references to condition and necessary permissions for use and occupation, and any other details are given in good faith and are believed to be correct, but any intending purchasers or tenants should not rely on them as statements or representations of fact but must satisfy themselves by inspection or otherwise as to the correctness of each of them; (iii) no person in the employment of Simmons & Sons Surveyors LLP has any authority to make or give any representation or warranty whatsoever in relation to this property.

sales • lettings & management • commercial • development • rural

32 Bell Street  
Henley-on-Thames  
Oxon  
RG9 2BH  
T: 01491 571111

1 High Street  
Marlow  
Bucks  
SL7 1AX  
T: 01628 484353

12 Wote Street  
Basingstoke  
Hants  
RG21 7NW  
T: 01256 840077

Peper Harow  
The Estate Office  
Godalming  
GU8 6BQ  
T: 01483 418151



 GALLERY