



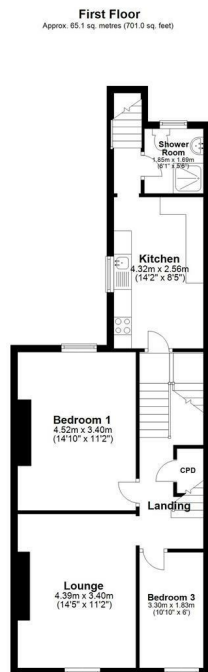
GUIDE PRICE

**£149,950**

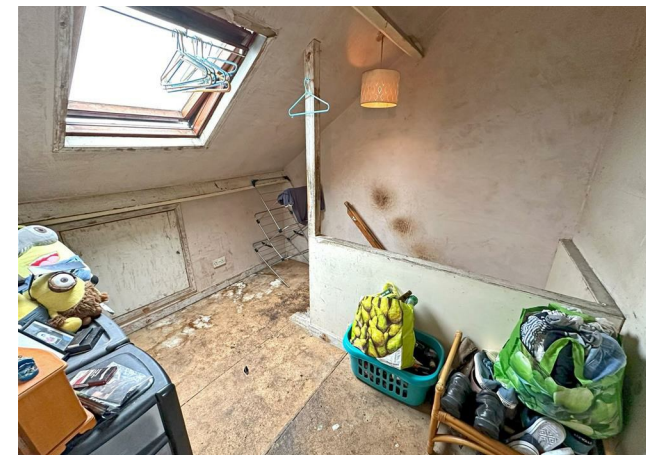
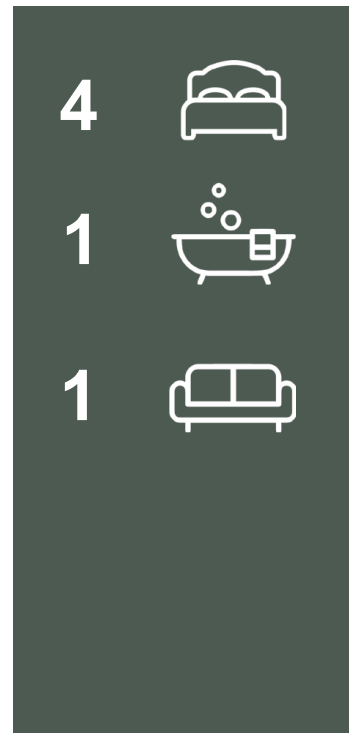
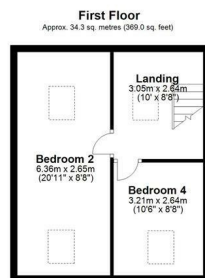
**Whitby Street**

North Shields, NE30 2HU





Total area: approx. 99.4 sq. metres (1070.0 sq. feet)



Energy Efficiency Rating		
	Current	Potential
Very energy efficient - lower running costs		
(92 plus) <b>A</b>		
(81-91) <b>B</b>		
(69-80) <b>C</b>		
(55-68) <b>D</b>		
(39-54) <b>E</b>		
(21-38) <b>F</b>		
(1-20) <b>G</b>		
Not energy efficient - higher running costs		
<b>England &amp; Wales</b>	55	75
	EU Directive 2002/91/EC	

Agents Note: Whilst every care has been taken to prepare these particulars, they are for guidance purposes only. All measurements are approximate and are for general guidance purposes only and whilst every care has been taken to ensure their accuracy, they should not be relied upon and potential buyers/tenants are advised to recheck the measurements



**OFFICE ADDRESS**  
63 Church Way  
North Shields  
Tyne & Wear  
NE29 0AE

**OFFICE DETAILS**  
0191 257 6823  
hello@fresh.property  
www.freshpropertycentre.co.uk