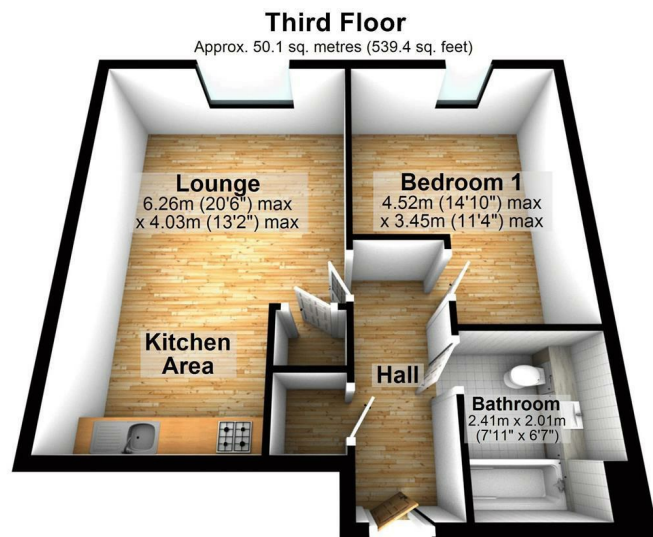


ASKING PRICE

£134,950

Smokehouse One Smiths Dock

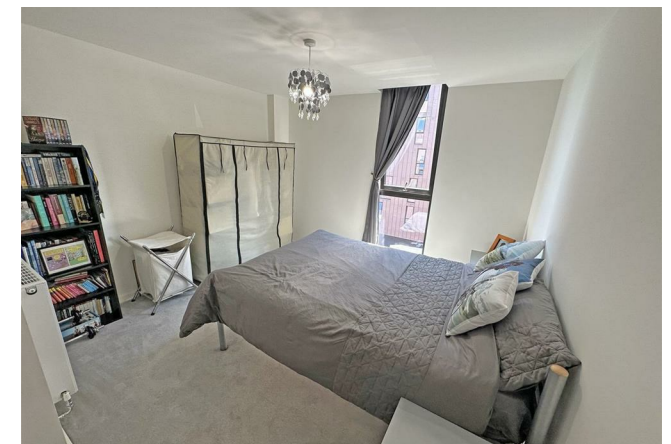
North Shields, NE29 6BU



Total area: approx. 50.1 sq. metres (539.4 sq. feet)



Energy Efficiency Rating		
	Current	Potential
Very energy efficient - lower running costs		
(92 plus) A		
(81-91) B	84	84
(69-80) C		
(55-68) D		
(39-54) E		
(21-38) F		
(1-20) G		
Not energy efficient - higher running costs		
England & Wales	EU Directive 2002/91/EC	



Agents Note: Whilst every care has been taken to prepare these particulars, they are for guidance purposes only. All measurements are approximate and are for general guidance purposes only and whilst every care has been taken to ensure their accuracy, they should not be relied upon and potential buyers/tenants are advised to recheck the measurements



OFFICE ADDRESS
63 Church Way
North Shields
Tyne & Wear
NE29 0AE

OFFICE DETAILS
0191 257 6823
hello@fresh.property
www.freshpropertycentre.co.uk