



Beanley Crescent, Tynemouth, Tyne and Wear

Three Bedroom Period Home | Tynemouth Village | Two Reception Rooms

Asking Price: £349,950



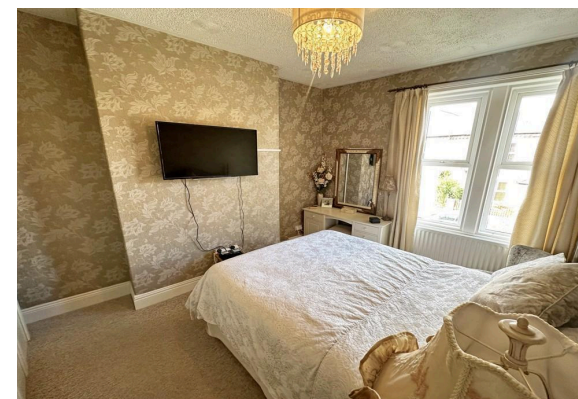
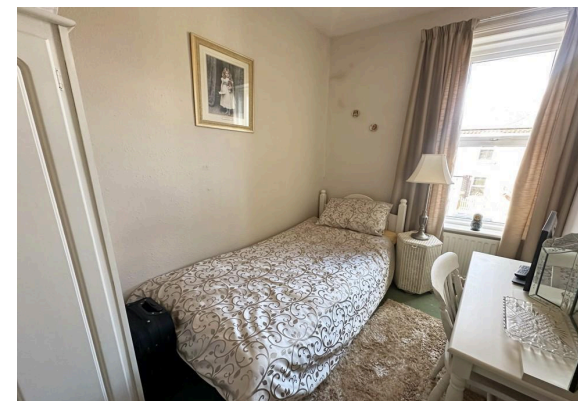
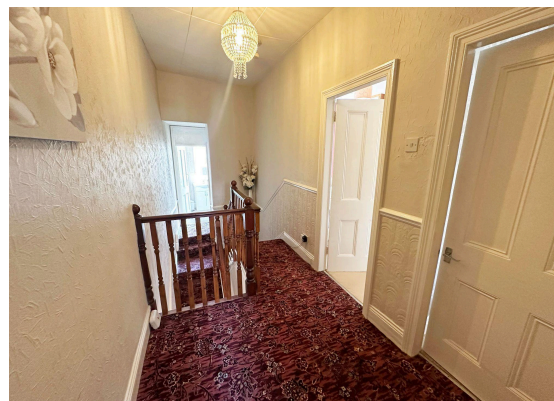
Beanley Crescent, North Shields, Tyne and Wear

DESCRIPTION

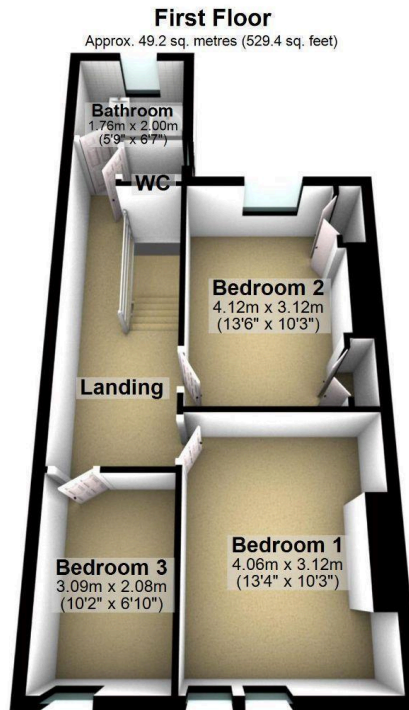
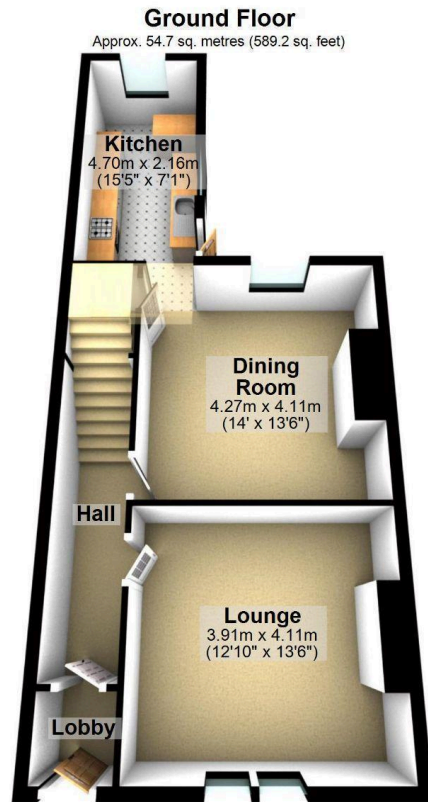
Fresh Property Centre is delighted to offer for sale this three bedroom, terraced house situated on Beanley Crescent in Tynemouth.

The accommodation comprises; entrance lobby, lounge, dining room and an extended breakfasting kitchen. On the first floor there are three bedrooms and a bathroom with separate WC.

Externally there is a town garden to the front and a yard to the rear. High levels of interest are anticipated, so early viewing is advised.







Total area: approx. 103.9 sq. metres (1118.6 sq. feet)

Do you have a property
to sell or let?

If you are thinking of selling your home or just curious to discover the value of your property, We would be pleased to provide free, no obligation sales and marketing advice.



01912576823



Fresh Property Centre, 63 Church Way, North Shields,
Tyne and Wear, NE29 0AE



sales@fresh.property



OPENING HOURS

Mon-Fri 9:00-17:30/Sat 10:00-15:00

Energy Performance Certificate

The energy efficiency rating is a measure of the overall efficacy of a home. The higher the rating the more energy efficient the home is and the lower the fuel bills will be.

Energy Efficiency Rating		
	Current	Potential
Very energy efficient - lower running costs		
(92-100) A		
(81-91) B		
(69-80) C		81
(55-68) D	64	
(39-54) E		
(21-38) F		
(1-20) G		
Not energy efficient - higher running costs		
England, Scotland & Wales	EU Directive 2002/91/EC	

DISCLAIMER

These particulars are intended to give a fair and reliable description of the property but no responsibility for any inaccuracy or error can be accepted and do not constitute an offer or contract. We have not tested any services or appliances (including central heating if fitted) referred to in these particulars and the purchasers are advised to satisfy themselves as to the working order and condition. If a property is unoccupied at any time there may be reconnection charges for any switched off/disconnected or drained services or appliances - All measurements are approximate.

