



Regent Terrace North Shields, NE29 0QE

We are pleased to offer for sale this two bedroom, ground floor flat situated on Regent Terrace, North Shields. The accommodation comprises; entrance hall, lounge, kitchen, two bedrooms and a four piece bathroom. Externally there is a garden to the front, a yard to the rear and a garage accessed via the parking area located to the rear of the property. Tastefully presented, early viewing is advised.

Asking Price £105,000



0191 257 6823

www.fresh.property

hello@fresh.property

63 Church Way, North Shields, Tyne & Wear, NE29 0AE



Zoopla

rightmove

PrimeLocation

OnTheMarket.com

We are pleased to offer for sale this two bedroom, ground floor flat situated on Regent Terrace, North Shields. The accommodation comprises; entrance hall, lounge, kitchen, two bedrooms and a four piece bathroom. Externally there is a garden to the front, a yard to the rear and a garage accessed via the parking area located to the rear of the property. Tastefully presented, early viewing is advised.

Entrance Hall

Via double glazed door. Built in cupboard, laminate flooring and radiator.

Lounge

Feature fireplace with coal effect electric fire, laminate flooring, radiator and double glazed window.



Bedroom One

Radiator and double glazed bay window.



Kitchen

Matching base and wall units with work surfaces over, stainless steel sink with drainer and mixer tap, built in oven with four ring gas hob and extractor fan over, plumbing for a washing machine, radiator, double glazed window and double glazed door to rear.



0191 257 6823

www.fresh.property

hello@fresh.property

63 Church Way, North Shields, Tyne & Wear, NE29 0AE



Zoopla

rightmove

PrimeLocation

onTheMarket.com

Bedroom Two

Radiator and double glazed window.



Bathroom

Four piece bathroom suite comprising; corner bath, shower cubicle, vanity hand wash basin and low level WC. Feature glass block window, tiled walls, extractor fan and heated towel rail.



Front

Paved front garden with borders.

Rear

Yard with gate.

Garage

Single garage with double doors to front and up and over door to rear, power and lights.



Please Note: All measurements are approximate and quoted in metric with imperial equivalents and for general guidance only and whilst every attempt has been made to ensure accuracy, they must not be relied on. The fixtures, fittings and appliances referred to have not been tested and therefore no guarantee can be given that they are in working order. Internal photographs are reproduced for general information and it must not be inferred that any item shown is included with the property.

Thinking of Moving?

Fresh can help you;

- Sell your home
- Arrange a mortgage
- Select a local solicitor

Call our team to see how we can help

0191 257 6823

www.fresh.property

hello@fresh.property

63 Church Way, North Shields, Tyne & Wear, NE29 0AE



Zoopla

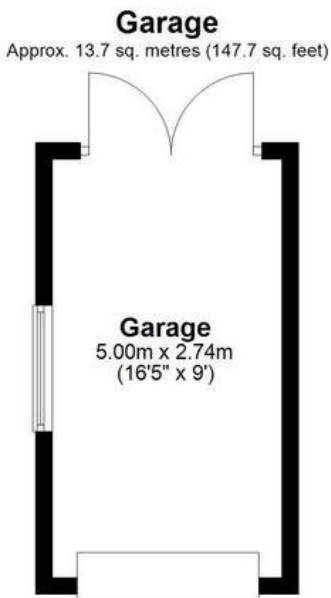
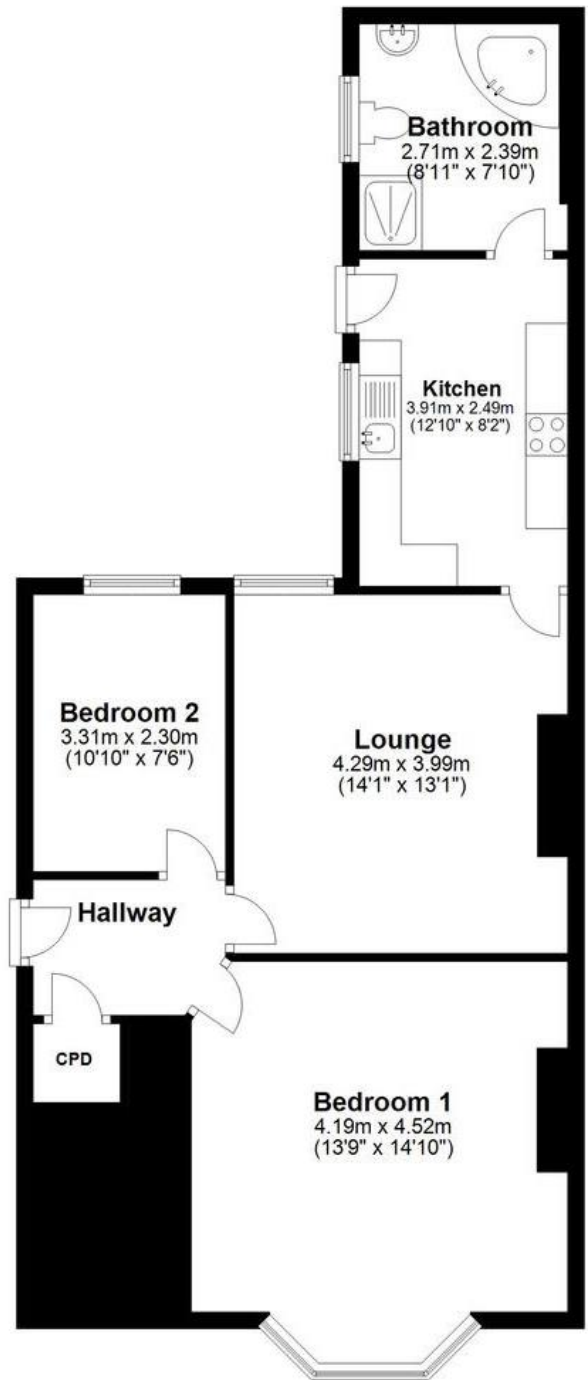
rightmove

PrimeLocation

onTheMarket.com

Ground Floor

Approx. 72.2 sq. metres (776.9 sq. feet)



Total area: approx. 85.9 sq. metres (924.6 sq. feet)

The floor plan is for illustrative purposes and is not to scale. Where measurements are shown, these are approximate and should not be relied upon. Sanitary ware and kitchen fittings are representative only and approximate to actual position, shape and style. No liability is accepted in respect of any consequential loss arising from the use of this plan.

0191 257 6823

www.fresh.property

hello@fresh.property

63 Church Way, North Shields, Tyne & Wear, NE29 0AE



Zoopla rightmove

PrimeLocation onTheMarket.com