



Chirton West View

North Shields, NE29 0EP

Fresh Property Centre are pleased to offer for sale this two bedroom, lower Tyneside flat situated on Chirton West View in North Shields. The accommodation comprises; entrance lobby, entrance hall, lounge, kitchen, two bedrooms and a bathroom/WC. Externally there is a yard to the rear. The property is available with no upper chain and would make an ideal first time buy or investment.



Offers Over £75,000



0191 257 6823

www.fresh.property

hello@fresh.property

63 Church Way, North Shields, Tyne & Wear, NE29 0AE



Zoopla

rightmove

PrimeLocation

OnTheMarket.com

Fresh Property Centre are pleased to offer for sale this two bedroom, lower Tyneside flat situated on Chirton West View in North Shields. The accommodation comprises; entrance lobby, entrance hall, lounge, kitchen, two bedrooms and a bathroom/WC. Externally there is a yard to the rear. The property is available with no upper chain and would make an ideal first time buy or investment.

Entrance Lobby

Via double glazed door. Door to;

Entrance Hall

Understairs cupboard, wall lights and dado rail.

Lounge

Feature fireplace, dado rail, radiator, double glazed door to rear.



Bedroom One

Coving to ceiling, dado rail, picture rail, radiator and two double glazed windows.



Bedroom Two

Dado rail, radiator and double glazed window to rear.



Kitchen

Matching base and wall units with work surfaces over, stainless steel sink with drainer and mixer tap, built in oven with four ring electric hob and stainless steel extractor fan over, plumbing for a washing machine, central heating boiler, radiator and double glazed window.



0191 257 6823

www.fresh.property

hello@fresh.property

63 Church Way, North Shields, Tyne & Wear, NE29 0AE



Zoopla

rightmove

PrimeLocation

OnTheMarket.com

Bathroom

Three piece bathroom suite comprising; panelled bath with shower over, pedestal hand wash basin and low level WC. Extractor fan, radiator and two frosted double glazed windows.



Rear

Yard with gate to lane.



Score	Energy rating	Current	Potential
92+	A		
81-91	B		
69-80	C		74 C
55-68	D	68 D	
39-54	E		
21-38	F		
1-20	G		

Please Note: All measurements are approximate and quoted in metric with imperial equivalents and for general guidance only and whilst every attempt has been made to ensure accuracy, they must not be relied on. The fixtures, fittings and appliances referred to have not been tested and therefore no guarantee can be given that they are in working order. Internal photographs are reproduced for general information and it must not be inferred that any item shown is included with the property.

Thinking of Moving?

Fresh can help you;

- Sell your home
- Arrange a mortgage
- Select a local solicitor

Call our team to see how we can help

0191 257 6823

www.fresh.property

hello@fresh.property

63 Church Way, North Shields, Tyne & Wear, NE29 0AE



Zoopla

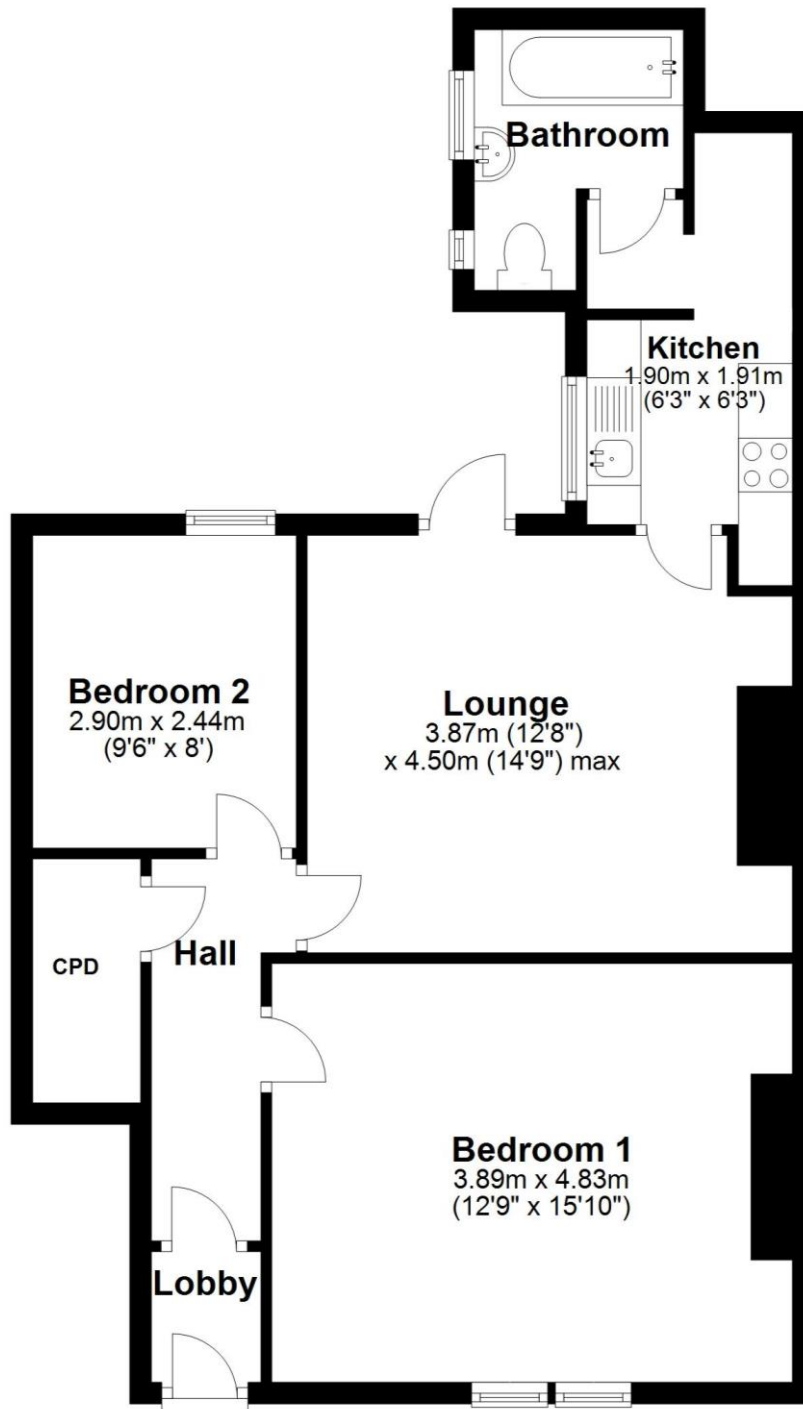
rightmove

PrimeLocation

onTheMarket.com

Ground Floor

Approx. 62.9 sq. metres (677.3 sq. feet)



Total area: approx. 62.9 sq. metres (677.3 sq. feet)

The floor plan is for illustrative purposes and is not to scale. Where measurements are shown, these are approximate and should not be relied upon. Sanitary ware and kitchen fittings are representative only and approximate to actual position, shape and style. No liability is accepted in respect of any consequential loss arising from the use of this plan.

0191 257 6823

www.fresh.property

hello@fresh.property

63 Church Way, North Shields, Tyne & Wear, NE29 0AE



Zoopla

rightmove

PrimeLocation

onTheMarket.com