



# Woolsington Road North Shields, NE29 8RS

Fresh Property Centre welcomes to the market this two bedroom semi detached home, situated on Woolsington Road, North Shields. The accommodation comprises; entrance hall, lounge, kitchen, utility room and store room. To the first floor there are two bedrooms and a two piece bathroom with separate WC. Externally there are gardens to both front and rear. The property benefits from double glazing and gas central heating. An ideal family home, early viewing is advised.



## Asking Price £139,950



**0191 257 6823**

[www.fresh.property](http://www.fresh.property)

[hello@fresh.property](mailto:hello@fresh.property)

63 Church Way, North Shields, Tyne & Wear, NE29 0AE



Zoopla

rightmove

PrimeLocation

OnTheMarket.com



**Fresh Property Centre welcomes to the market this two bedroom semi detached home, situated on Woolsington Road, North Shields. The accommodation comprises; entrance hall, lounge, kitchen, utility room and store room. To the first floor there are two bedrooms and a two piece bathroom with separate WC. Externally there are gardens to both front and rear. The property benefits from double glazing and gas central heating. An ideal family home, early viewing is advised.**

#### **Entrance Hall**

Via double glazed door. Built in cupboard, laminate flooring, radiator and double glazed window.

#### **Lounge**

Radiator and double glazed window.



#### **Kitchen**

Modern base and wall units with work surfaces over, sink with drainer and mixer tap, space for a range, two built in cupboards and two double glazed windows.



#### **Utility Room**

Base and wall units, double glazed window, double glazed door to rear and door to;

#### **Storage Room**

Lights, power points and double glazed double doors to front.

#### **Landing**

Loft access and double glazed window.

#### **Bedroom One**

Built in wardrobes, built in cupboards, radiator and double glazed window.



#### **Bedroom Two**

Radiator and double glazed window.



**0191 257 6823**

[www.fresh.property](http://www.fresh.property)

[hello@fresh.property](mailto:hello@fresh.property)

63 Church Way, North Shields, Tyne & Wear, NE29 0AE



**Zoopla**

**rightmove**

**PrimeLocation**

**onTheMarket.com**

### Bathroom

Two piece bathroom suite comprising; panelled bath with shower over and pedestal hand wash basin. Built in cupboard, part tiled and frosted double glazed window.



### Separate WC

Low level WC and frosted double glazed window.



### Rear

Laid to lawn with patio area.



Please Note: All measurements are approximate and quoted in metric with imperial equivalents and for general guidance only and whilst every attempt has been made to ensure accuracy, they must not be relied on. The fixtures, fittings and appliances referred to have not been tested and therefore no guarantee can be given that they are in working order. Internal photographs are reproduced for general information and it must not be inferred that any item shown is included with the property.

### Thinking of Moving?

Fresh can help you;

- Sell your home
- Arrange a mortgage
- Select a local solicitor

Call our team to see how we can help

0191 257 6823

www.fresh.property

hello@fresh.property

63 Church Way, North Shields, Tyne & Wear, NE29 0AE



Zoopla

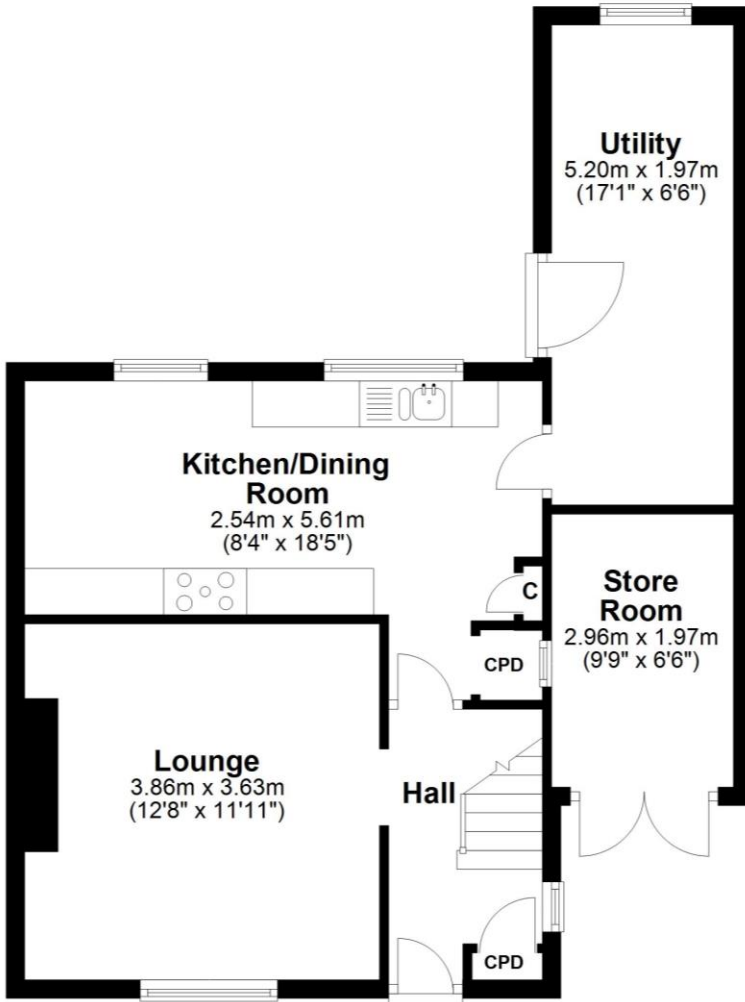
rightmove

PrimeLocation

onTheMarket.com

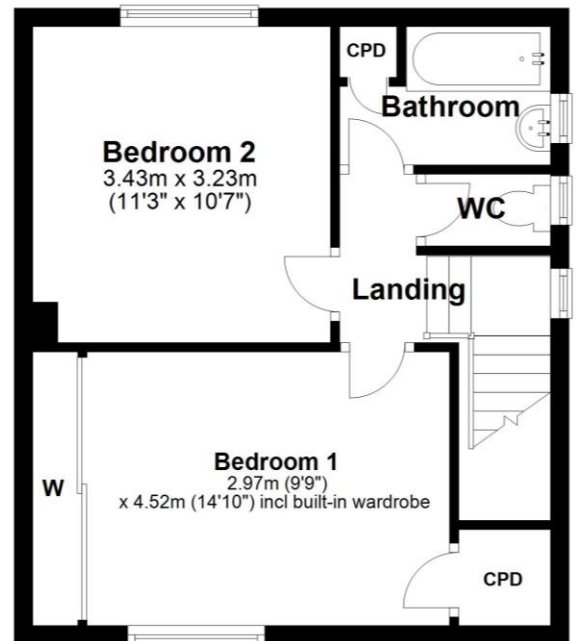
## Ground Floor

Approx. 52.4 sq. metres (563.5 sq. feet)



## First Floor

Approx. 36.5 sq. metres (392.5 sq. feet)



Total area: approx. 88.8 sq. metres (956.0 sq. feet)

The floor plan is for illustrative purposes and is not to scale. Where measurements are shown, these are approximate and should not be relied upon. Sanitary ware and kitchen fittings are representative only and approximate to actual position, shape and style. No liability is accepted in respect of any consequential loss arising from the use of this plan.

0191 257 6823

www.fresh.property

hello@fresh.property

63 Church Way, North Shields, Tyne & Wear, NE29 0AE



Zoopla rightmove

PrimeLocation onTheMarket.com