

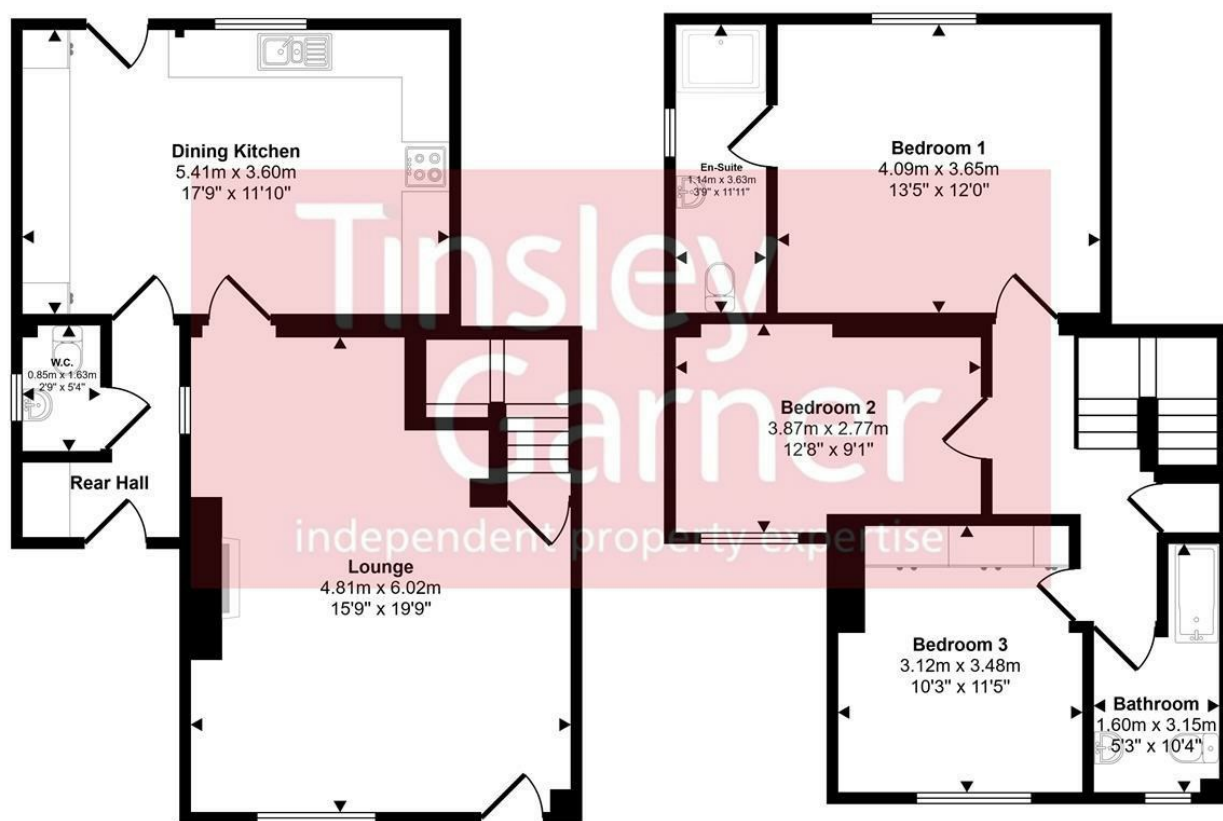


## 2 Fitzherbert Cottages Early Lane, Swynnerton, Stone, Staffordshire, ST15 0RB

MOVE IN FOR CHRISTMAS. PET FRIENDLY RENTAL. A picture-perfect cottage in a sought after village location close to Stone. 2 Fitzherbert Cottages is centrally located within the village, strolling distance from the Fitzherbert Arms, village church and cricket club, and has some lovely countryside quite literally on the doorstep. Spacious accommodation featuring sitting room with wood burning stove, traditional style kitchen with space for a breakfast table, 3 bedrooms, en-suite shower room and bathroom. Easily managed garden and off road parking for several cars. This is a really lovely house in a super location. Unfurnished. Available immediately. Pets will be considered. Upvc double glazed windows. Oil central heating.

**£1,350 PCM**

Approx Gross Internal Area  
110 sq m / 1184 sq ft



Ground Floor  
Approx 55 sq m / 591 sq ft

First Floor  
Approx 55 sq m / 592 sq ft

This floorplan is only for illustrative purposes and is not to scale. Measurements of rooms, doors, windows, and any items are approximate and no responsibility is taken for any error, omission or mis-statement. Icons of items such as bathroom suites are representations only and may not look like the real items. Made with Made Snappy 360.

