



11 Wesley Drive, Stone, Staffordshire, ST15 8FQ

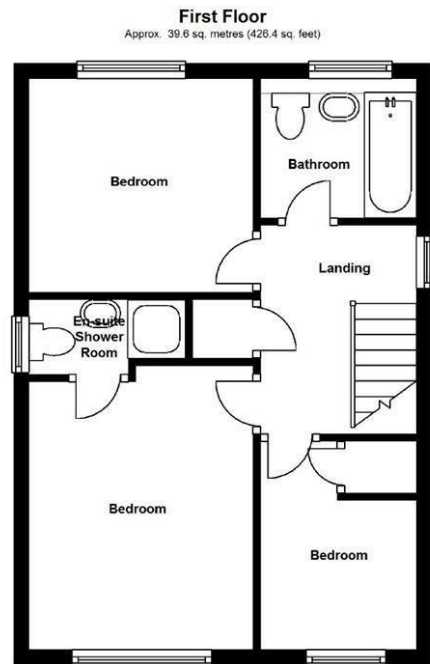
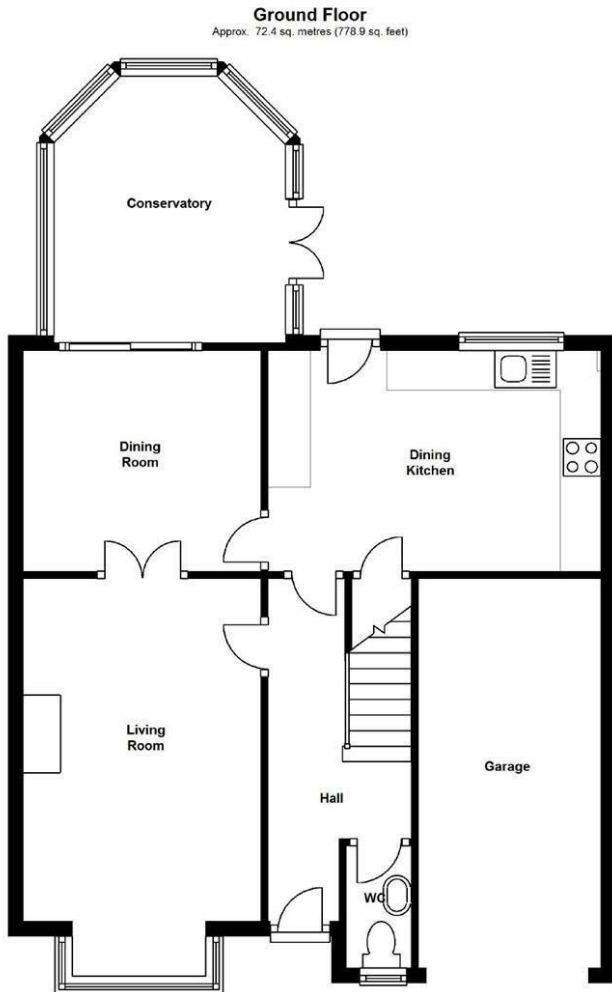
A lovely detached house situated in a quiet leafy cul-de-sac on the southern outskirts of Stone. Recently upgraded and decorated throughout, with spacious accommodation including; entrance hall, guest cloakroom, living room, dining room, conservatory, breakfast kitchen with appliances, three bedrooms, en-suite shower room and a family bathroom. Located within easy reach of a variety of local amenities, five minutes from the canal, and ten minutes walk into the town centre. Also benefitting from Upvc double glazed windows and doors, gas combi central heating, off road parking before a single garage, plus a lovely mature garden to the rear.

A super house in a great location.

Unfurnished - Available early Aug.24

NO PETS

£1,325 PCM



Total area: approx. 112.0 sq. metres (1205.3 sq. feet)

