



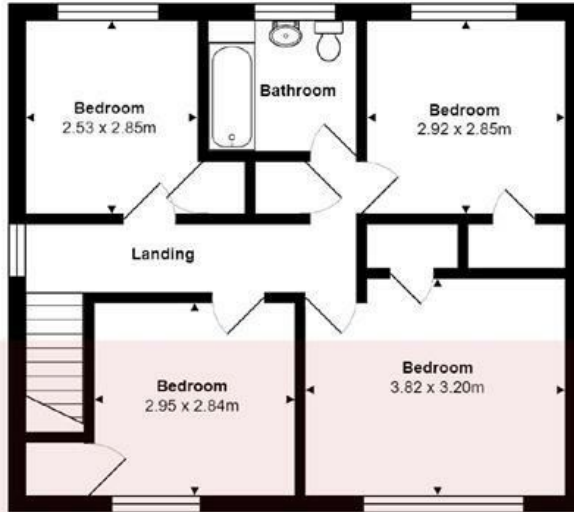
9 Cedar Park, Stone, Staffordshire, ST15 8PE

Do you need a little more convenience in your life? That being the case this mature detached house could well be the one for you. Cedar Park is a pleasant tree-lined cul-de-sac in a very handy location strolling distance to Stone town centre, close to Stone cricket club and about half a mile from St Michael's school. This is a well presented family home which features spacious accommodation with two reception rooms, stylish modern kitchen with integrated appliances, separate utility, four bedrooms, & family bathroom. Good size plot with pleasant mature gardens, off road parking for several cars & a detached double garage.

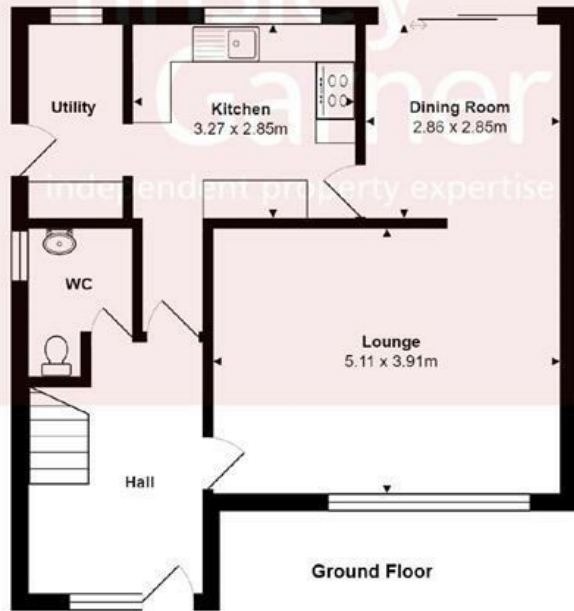
Available April 2024.

Sorry - no pets

£1,100 Per Month



First Floor



Ground Floor

Total Area: 113.6 m²

All measurements are approximate and for display purposes only

Energy Efficiency Rating		Current	Potential
Very energy efficient - lower running costs			
(92 plus) A			
(81-91) B			
(69-80) C			
(55-68) D			
(39-54) E			
(21-38) F			
(1-20) G		1	1
Not energy efficient - higher running costs			
England & Wales		EU Directive 2002/91/EC	

Environmental Impact (CO ₂) Rating		Current	Potential
Very environmentally friendly - lower CO ₂ emissions			
(92 plus) A			
(81-91) B			
(69-80) C			
(55-68) D			
(39-54) E			
(21-38) F			
(1-20) G		1	1
Not environmentally friendly - higher CO ₂ emissions			
England & Wales		EU Directive 2002/91/EC	