

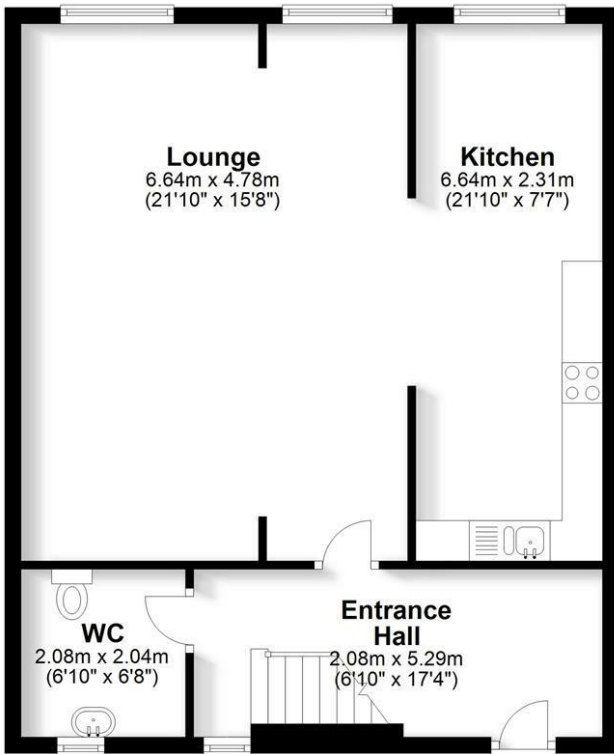


## 28 Chetwynd Court, Stafford, Staffordshire, ST17 4FQ

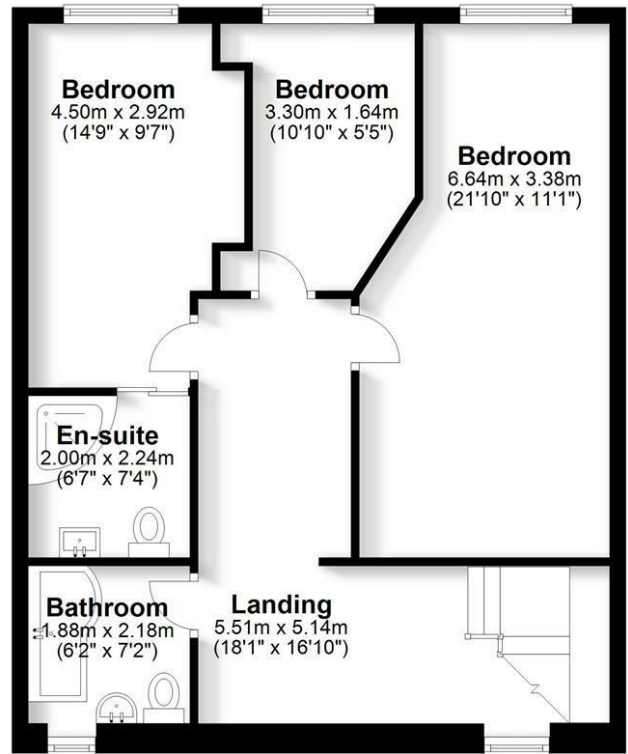
Plot 28 is a Grade II listed town house, with open plan living room, dining kitchen, 3 bedrooms, en-suite shower room and guest bathroom. Featuring spacious interiors, high quality specification and a host of period features whilst catering for every requirement of twenty first century living. Secure parking for 2 cars within the courtyard. Chetwynd Court is an imaginative recreation of one of the town's most iconic buildings, the former Chetwynd Centre located in the heart of Stafford and just moments walk from the railway station. This exclusive gated development comprises 37 individual properties including 1, 2 & 3 bedroom apartments, and 3 bedroom town houses within the original Grade II listed building together with 10 newly built 4 bedroom town houses. The mainline railway station is within 5 minutes walk giving easy access to Birmingham New Street within 40 minutes and London Euston in 1hr 20mins. First phase now nearing completion. Photographs and video tour are of a similar but not the exact property

**£285,000**

### Ground Floor



### First Floor



We accept no responsibility for any mistake or inaccuracy contained within the floorplan. The floorplan is provided as a guide only and should be taken as an illustration only. The measurements, contents and positioning are approximations only and provided as a guidance tool and not an exact replication of the property.  
Plan produced using PlanUp.

