

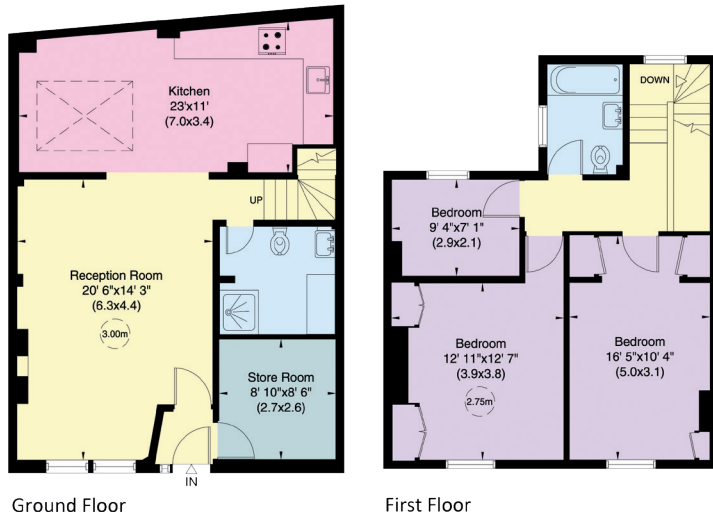
Caroline Place Mews, W2



Caroline Place Mews, W2

Approximate Gross Internal Area
122 sq m/ 1309 sq ft

Not to Scale, for identification only



PET FRIENDLY - A charming three bedroom mews house with off-street parking within a stone's throw of Hyde Park & Kensington Gardens.

- 3 Bedrooms
- Bathroom & shower room
- Large reception room
- Kitchen with dining area
- Store room
- Off-street parking
- PET FRIENDLY

Terms

Rent: £1,600 per week
£6,933.33 per calendar month

Furniture: Unfurnished

Availability: Now

EPC: C

Council Tax: Band G

For clarification purposes we wish to inform all interested parties that we have prepared these particulars as a general guide. We have not carried out a detailed survey nor tested the services, appliances and specific fittings. Room sizes should not be relied upon for carpets and furnishings

JOHN WILCOX
& Co.

020 7602 2352

www.johnwilcox.co.uk