



Taverners Close,
W11

Taverners Close, W11

A CONTEMPORARY MEWS HOUSE WITH OFF STREET PARKING AND PATIO GARDEN.

Situated in a gated mews off Addison Avenue in a desirable location between Royal Crescent, Norland Square and close to the shops, bars and transport links of Holland Park Avenue.

The property comprises spacious and well laid out accommodation arranged around a central staircase over three floors. The ground floor features a reception room, kitchen and reception room, kitchen and separate dining room with doors leading out to the patio garden.

At first floor there are two double bedrooms and a spacious family bathroom. On the third floor is a master bedroom suite with vaulted ceilings, and a generous ensuite.

Terms

Tenure Freehold

EPC Rating D

Local Authority The Royal Borough of Kensington and Chelsea

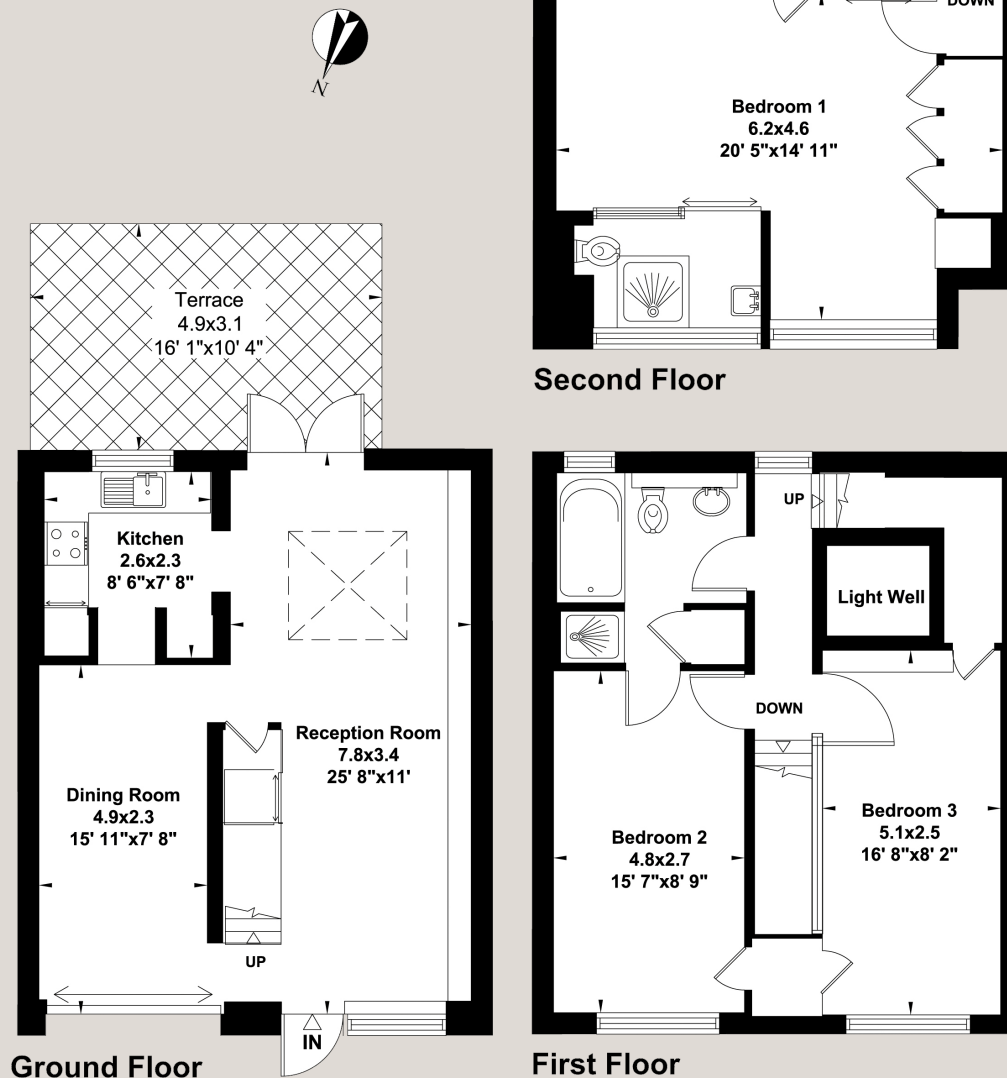
Price £1,950,000 Subject to Contract





Approx. Gross Internal Area

1,377 sq ft (128 sq m)



The accommodation comprises

- Three bedrooms, including principal suite
- Reception room
- Kitchen
- Family bathroom
- Private patio garden
- Off street parking
- Gated mews
- 1347 square feet
- Freehold

For clarification purposes we wish to inform all interested parties that we have prepared these particulars as a general guide. We have not carried out a detailed survey nor tested the services, appliances and specific fittings. Room sizes should not be relied upon for carpets and furnishings

JOHN WILCOX
& Co.

020 7602 2352

www.johnwilcox.co.uk