



192 Crompton Way, Bolton

Bolton

£355,000





## 192 Crompton Way

Bolton, Bolton

Stunning and Beautifully Presented Bow Fronted 1930's Extended 3 Bedroom Semi Detached House. 2 Receptions with Additional Study/Bed 4, G/f Showerroom & 1st Floor Showerroom, 2 Reception Rooms, Kitchen and Separate Utility. Impressive, Extensive Rear Garden & Decking, Spacious Drive leading to Garage  
Council Tax band: D

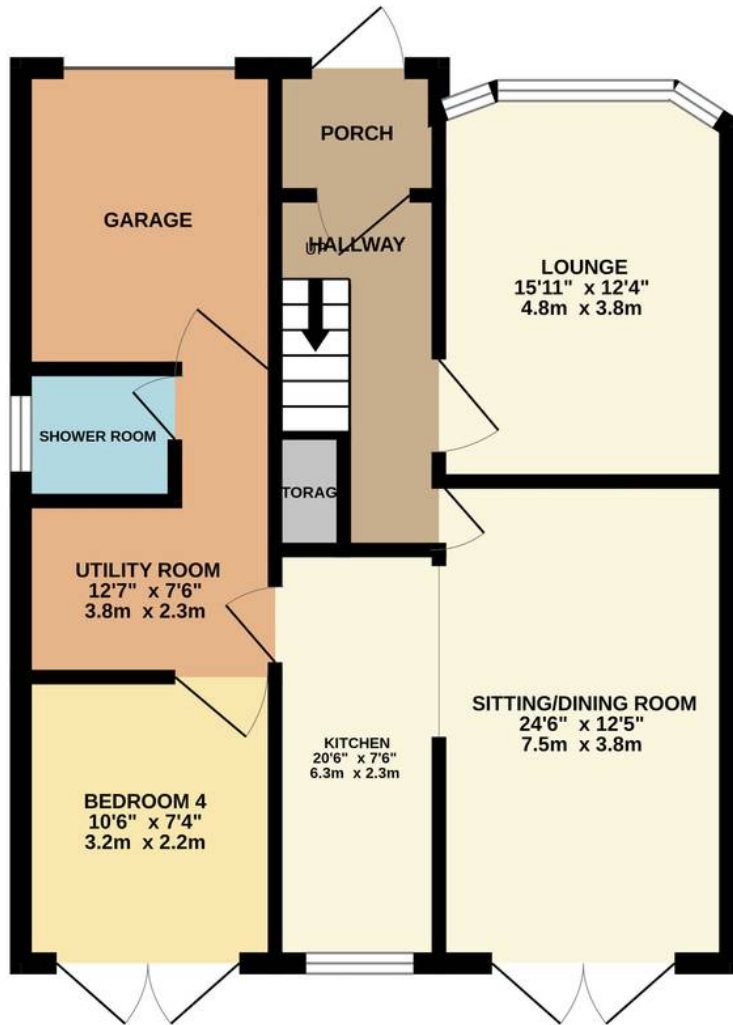
Tenure: Freehold

EPC Energy Efficiency Rating: C

EPC Environmental Impact Rating: C

- SUPERB BOW FRONTED 1930'S EXTENDED SEMI DETACHED HOUSE
- TASTEFULLY AND BEAUTIFULLY PRESENTED THROUGHOUT
- ENTRANCE PORCH, HALLWALLY, LOUNGE, DINING ROOM/SITTING ROOM
- WELL EQUIPPED FITTED BREAKFAST KITCHEN WITH SEPARATE UTILITY ROOM
- G/FLOOR SHOWER ROOM WITH STUDY/BEDROOM 4
- 3 FIRST FLOOR BEDROOMS AND FAMILY SHOWER ROOM
- IMPRESSIVE & EXTENSIVE LAWN REAR GARDEN WITH ATTRACTIVE DECKED PATIO
- INTEGRAL GARAGE WITH REMOTE ELECTRIC DOOR, SERVED BY SPACIOUS PAVED 3 CAR DRIVEWAY

GROUND FLOOR



1ST FLOOR

