



7 Sherwood Drive, Harrogate, North Yorkshire, HG2 7HE

**£230,000**



## 7 Sherwood Drive, Harrogate, North Yorkshire, HG2 7HE

---

A well-presented two-bedroom end-of-terrace house offering good-sized accommodation with an attractive rear garden, generous driveway, and single garage.

---

The property features a spacious sitting room, modern dining kitchen, two good-sized bedrooms and a shower room. It benefits from gas central heating and double glazing throughout.

The property is located on a quiet residential street, well served by local shops, schools, and amenities, and is ideally situated for access to both Harrogate and Knaresborough. An internal viewing is strongly recommended.







## **GROUND FLOOR ENTRANCE HALL**

### **DINING KITCHEN**

With space for a dining table. The kitchen comprises a range of fitted wall and base units with gas hob, integrated oven and space for appliances.

### **SITTING ROOM**

A spacious reception room with window to the front and useful fitted cupboard.

## **FIRST FLOOR**

### **BEDROOMS**

There are two good-sized bedrooms on the first floor. The main bedroom has fitted wardrobes.

### **SHOWER ROOM**

A modern suite comprising WC, washbasin and shower.

### **OUTSIDE**

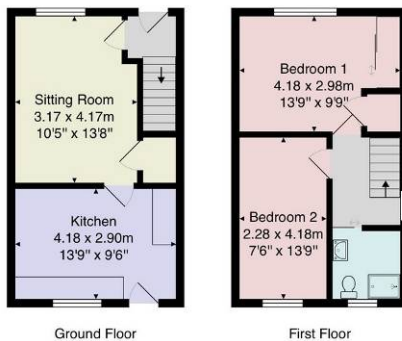
A driveway provides off-road parking and leads to a single garage. To the rear of the property, there is an attractive and good-sized garden with lawn and patio sitting area.

**Tenure** - Freehold

**Council Tax Band** - B







Total Area: 61.2 m<sup>2</sup> ... 659 ft<sup>2</sup>  
 All measurements are approximate and for display purposes only.  
 No liability is accepted by either the agency or Box Property Solutions Ltd as to the exact measurements of the rooms.  
 Box Property Solutions Ltd retains the copyright on this plan and allows agents to use it with agreed permission.

**Verity Frearson**

26 Albert Street, Harrogate,  
 North Yorkshire, HG1 1JT

For all enquiries contact us on:

**01423 562531**

[sales@verityfearson.co.uk](mailto:sales@verityfearson.co.uk)