



28 Harlow Park Crescent, Harrogate, HG2 0AW

£350,000

28 Harlow Park Crescent, Harrogate, HG2 0AW

An impressive three-bedroomed semi-detached home offering stylish accommodation finished to a high standard, including low maintenance gardens and ample off-street parking.

The property has undergone a comprehensive refurbishment programme in recent years to reveal well-presented accommodation throughout, featuring a stunning open-plan dining kitchen with double doors leading to an enclosed garden, sitting room with 'two-sided fireplace', three bedrooms and bathroom.

Situated in a popular residential location, well served by local shops and services and within easy walking distance of the town centre. The area is well served by good primary and secondary schools.





GROUND FLOOR

ENTRANCE HALL

uPVC front entrance door. Central heating radiator and stairs leading to the first floor.

SITTING ROOM

Window to front and central heating radiator. Two-sided fireplace shared with the dining kitchen having remote-controlled inset gas fire.

OPEN-PLAN DINING KITCHEN

A beautifully presented open-plan dining kitchen, which has been finished to a high standard and comprises -

KITCHEN

Having a range of wall and base unit with Corian work surfaces having moulded inset 1.5-bowl sink unit. Integral Smeg microwave oven and induction hob with vented extractor above. Integrated dishwasher, washing machine and fridge/ freezer. Bespoke wood-effect flooring with under-floor heating. Useful under-stairs storage cupboard and pull-out pantry. Window to rear and exterior door to side.

DINING AREA

With space for family dining table. Double doors to rear leading to the enclosed garden. Two-sided fireplace with inset remote-controlled gas fire. Under-floor heating. Vertical central heating radiator and glazed double doors leading to -

FIRST FLOOR

LANDING

With access to boarded loft space. Double-glazed window to side and central heating radiator.

BEDROOM 1

Window to front, central heating radiator and fitted wardrobes with sliding doors.

BEDROOM 2

Window to rear and central heating radiator.

BEDROOM 3

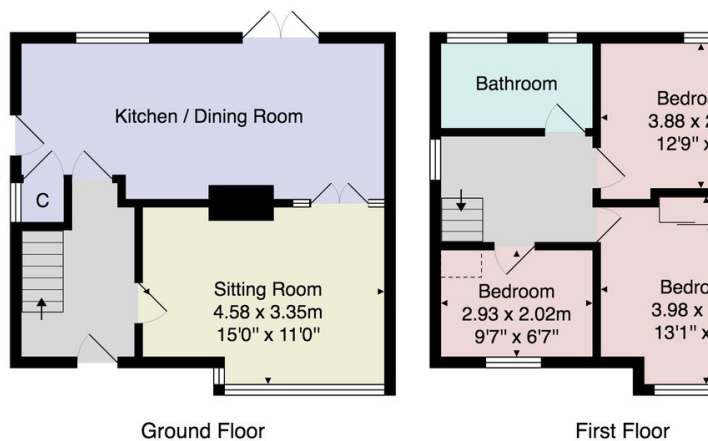
Window to front and central heating radiator.

BATHROOM

Fully tiled. Stylish suite comprising panelled bath with shower above and shower screen, low-flush WC and wall-mounted vanity unit with inset washbasin. Wall-mounted mirror with lighting. Chrome heated towel rail, window to rear and under-floor heating.

OUTSIDE

Block-paved driveway to front providing off-street parking. Access to side lead to enclosed garden to rear, with Astroturf lawn and timber garden shed with power, light and plumbing.



Total Area: 24.0m² - 254.6sq

Verity Frearson

26 Albert Street, Harrogate,
North Yorkshire, HG1 1JT

For all enquiries contact us on:

01423 562531

sales@verityfearson.co.uk