



VERITY
FREARSON

10 EAST VIEW COURT, GOLDSBOROUGH, KNARESBOROUGH, HG5 8PT

GUIDE PRICE £565,000

10 EAST VIEW COURT, GOLDSBOROUGH,

Knaresborough, HG5 8PT

A fantastic opportunity to purchase a substantial four / five-bedroom property with attractive south-facing gardens, situated in the heart of this highly sought-after village.

The beautifully presented and spacious accommodation comprises a stunning open-plan kitchen and living area with glazed bi-folding doors leading to the garden. There is also a sitting room with a wood-burning stove, and a further reception room which could provide an additional sitting or dining area. There is a useful downstairs WC and access to the integral garage. Upstairs, there are four good-sized bedrooms, including the main bedroom which has a large adjoining dressing room and stunning en-suite shower room. The dressing room could easily be adapted to provide a fifth bedroom if required. There is also a modern family bathroom. A driveway provides parking and leads to an integral single garage and there is an attractive south-facing garden with lawn and paved sitting areas.



2 Reception Rooms · Dining Kitchen · Cloakroom · Utility Room

4 Bedrooms · En-Suite Shower Room · Dressing Room · Bathroom

Off-Road Parking · Integral Garage · Lawned Garden To Rear With South-Facing Aspect







ACCOMMODATION

GROUND FLOOR RECEPTION HALL

SITTING ROOM

A spacious reception room with attractive brick fireplace and wood-burning stove.

DINING KITCHEN

A stunning open-plan kitchen with living / dining area and glazed bi-folding doors leading to the rear garden. The kitchen comprises a range of stylish wall and base units with marble worktops, range cooker, integrated microwave, dishwasher and fridge / freezer.

SNUG / DINING ROOM

Providing a further reception room which could be used as an additional sitting area or dining room. Windows on two sides.

UTILITY ROOM

Useful laundry space with plumbing for washing machine.

CLOAKROOM

With WC and washbasin.

FIRST FLOOR BEDROOMS

There are four good-sized bedrooms on the first floor. The main bedroom is of particularly generous proportions and has an adjoining dressing room and impressive en-suite shower room. The dressing room could easily be adapted for use as a fifth bedroom if required.

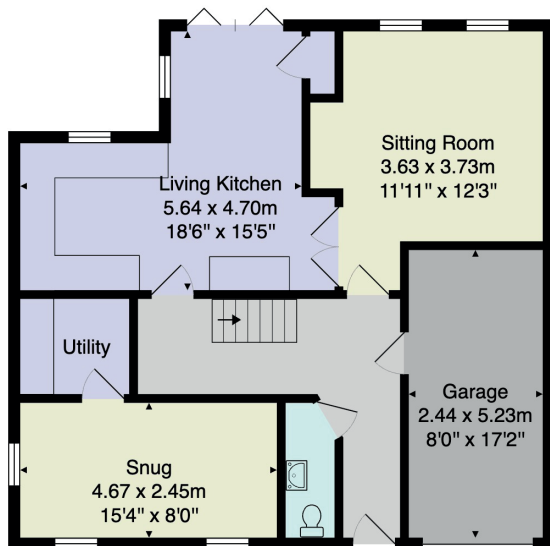
EN-SUITE SHOWER ROOM

A white modern suite comprising WC, twin washbasins set within a vanity unit, and large walk-in shower. Tiled walls and floor.

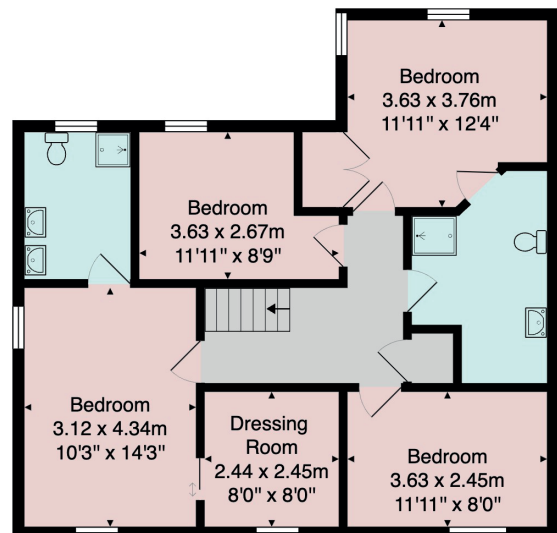
BATHROOM

A white suite comprising WC, washbasin set within a vanity unit and bath.

FLOOR PLAN



Ground Floor



First Floor

Total Area: 161.1 m² ... 1734 ft²

All measurements are approximate and for display purposes only.

No liability is accepted by either the agency or Box Property Solutions Ltd as to the exact measurements of the rooms.

Box Property Solutions Ltd retains the copyright on this plan and allows agents to use it with agreed permission.

Outside

A drive provides parking and leads to an integral single garage. To the rear of the property there is an attractive rear garden with lawn and paved sitting areas enjoying a south-facing aspect.

Location

The property is situated in the heart of this popular and well-regarded village, which is well served by excellent village amenities including a Church of England affiliated primary school, the Bay Horse Inn and a church. The 16th century Goldsborough Hall is a historic house within the village, providing five-star luxury accommodation, dining, and with award-winning gardens. Goldsborough is surrounded by beautiful open countryside and is convenient for access to Knaresborough, Harrogate, York, Leeds on the A1(M).

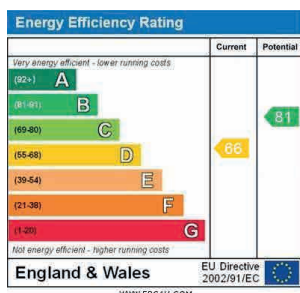
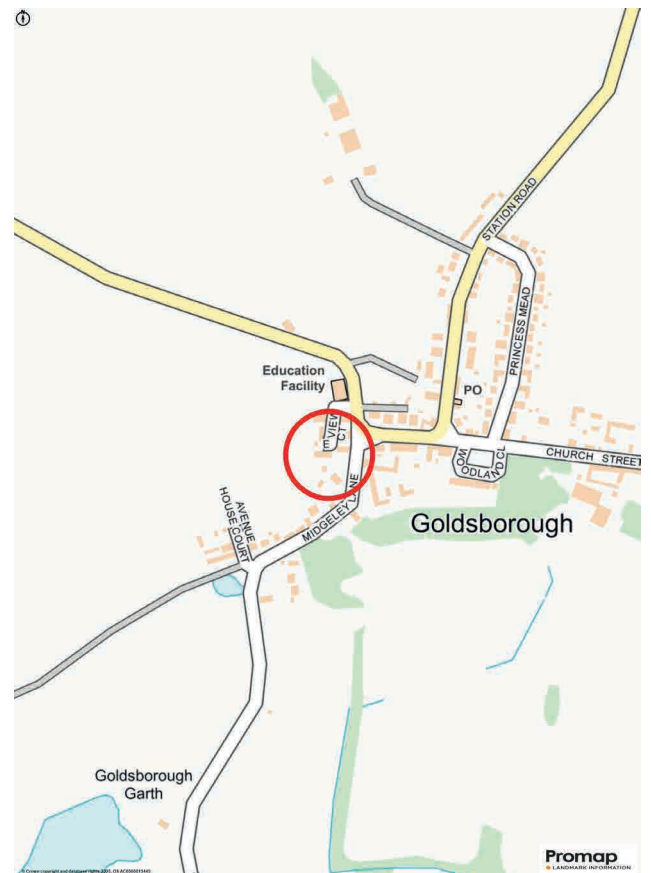
Services

All mains services connected.

Tenure

Freehold

Council Tax Band - F



Harrogate

26 Albert Street, Harrogate
North Yorkshire, HG1 1JT

Sales 01423 562 531
Lettings 01423 530 000

sales@verityfearson.co.uk
verityfearson.co.uk





VERITY
FREARSON

verityfearson.co.uk