



Lancaster House, WD23. This elegant split-level apartment is located within the prestigious Royal Connaught Park, one of the area's most sought-after developments. Generously proportioned and beautifully presented, this luxury home offers two spacious double bedrooms, two luxurious bathrooms, a guest WC, and a bright open-plan living and dining space. Two private balconies extend the living areas outdoors – perfect for relaxing or entertaining

Residents enjoy exclusive access to first-class on-site facilities, including a private indoor swimming pool, fully equipped gym, tennis court, steam room, and sauna. A 24-hour concierge and security service ensure both convenience and peace of mind. Available immediately, the property can be offered furnished or unfurnished.

Marlborough Drive, Bushey, WD23 2GU

£4,500 pcm

HOBARTS ESTATE AGENTS - LONDON (North)
8 CRESCENT ROAD
Alexandra Park
LONDON N22 7RS

rent@hobartsproperty.co.uk
www.hobartsproperty.co.uk
0208 348 3333



- Connaught Park, WD23
- Excellent Local Amenities
- Transport to Central London
- Gym / Tennis Courts
- 24 Hour Concierge / Security

- Elegantly Modern
- Luxury Apartment
- Swimming Pool
- Sauna
- Balcony

Lancaster House, WD23

Approximate gross internal area

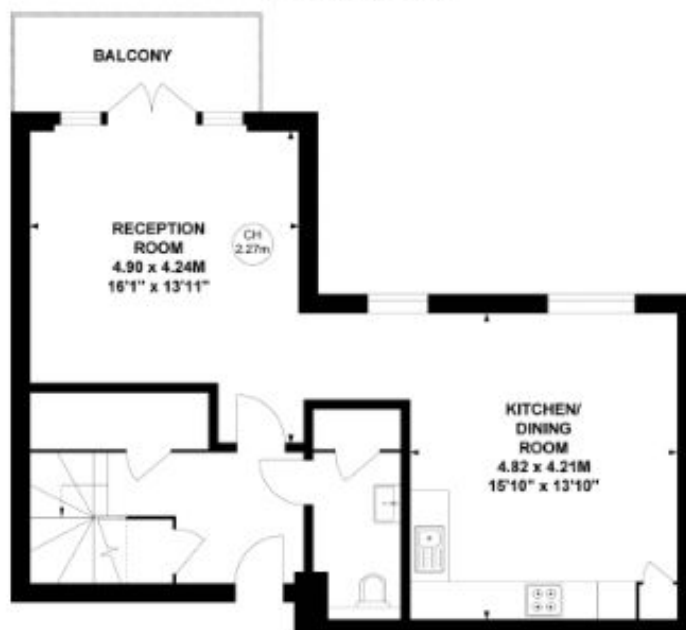
129.67 sq m / 1396 sq ft

Key :

CH - Ceiling Height



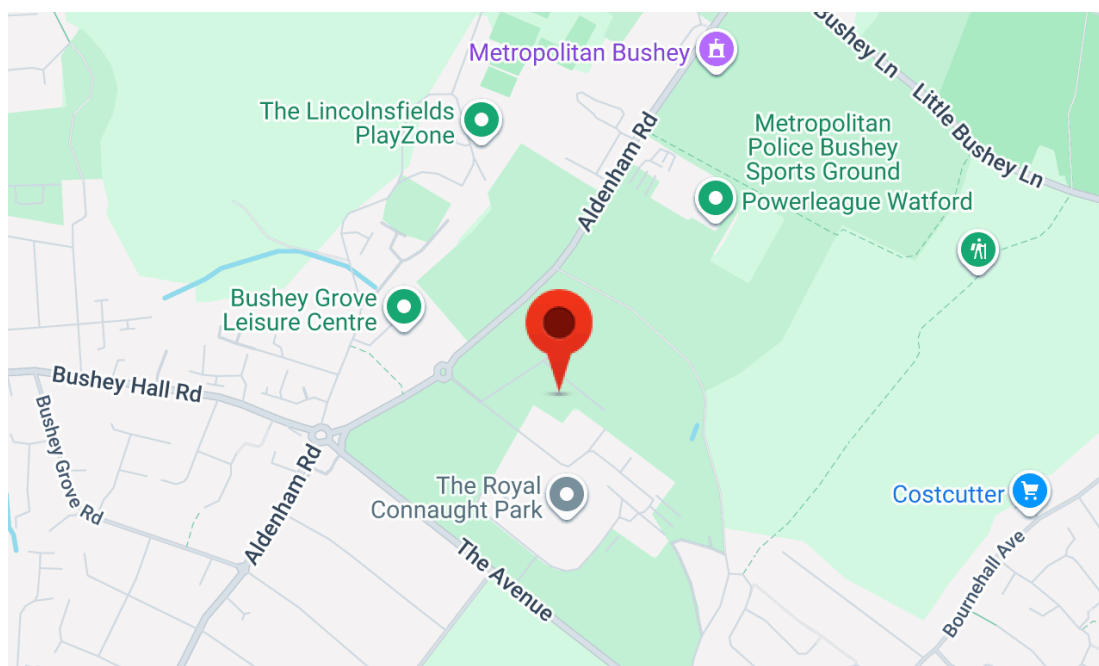
Second Floor



First Floor

Not to scale, for guidance only and must not be relied upon as a statement of fact.

All measurements and areas are approximate only



Energy Efficiency Rating		
	Current	Potential
Very energy efficient - lower running costs		
(92+) A		
(81-91) B	86	86
(69-80) C		
(55-68) D		
(39-54) E		
(21-38) F		
(1-20) G		
Not energy efficient - higher running costs		
England, Scotland & Wales		
EU Directive 2002/91/EC		

Address: Marlborough Drive, WD23

Viewings:

Strictly by appointment via
HOBARTS ESTATE AGENTS
0208 348 3333

Contact:

8 CRESCENT ROAD, Alexandra
Park, LONDON N22 7RS

rent@hobartsproperty.co.uk
www.hobartsproperty.co.uk

rightmove

PrimeLocation.com

homes24.co.uk

Zoopa.co.uk

propertyfinder.com



These property details, including measurements, floor plans and items depicted in photographs etc. are intended only as a brief guide to prospective purchasers and are not intended to be relied upon for any purpose whatsoever. Any interested party should satisfy themselves by inspection or otherwise as to the correctness of each statement contained in these details.