



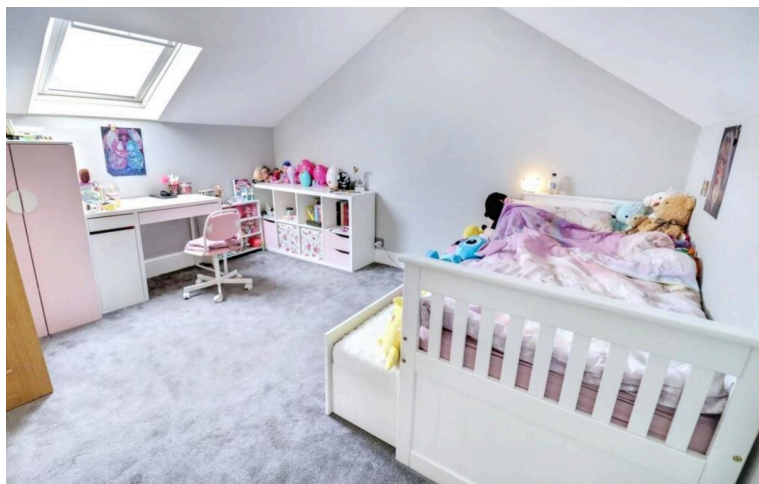
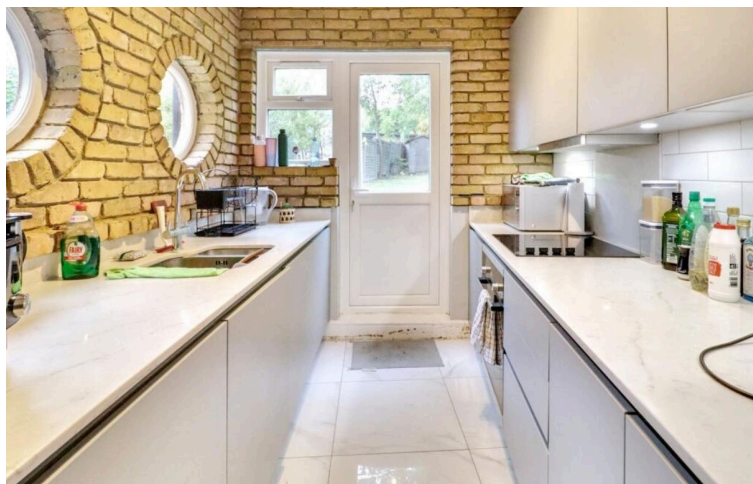
An exceptional four-bedroom, three-storey period home situated within the sought-after Hutton Grove, North Finchley N12, recently refurbished to a very high standard throughout with quality fixtures, contemporary finishes, and interior designed. The ground floor features marble flooring and comprises a spacious, bright reception room, a newly fitted state-of-the-art kitchen/dining room with top-of-the-range and integrated appliances, a separate utility room, a modern shower room, and direct access to a generously sized private rear garden. On the first floor, there are two spacious double bedrooms, both with ample fitted wardrobes. The top floor features two additional double bedrooms, a stylish contemporary bathroom, and a shower suite. This elegant, modern, and spacious house enjoys a prime location just a short walk from Woodside Park Underground Station (Northern Line) and an unparalleled range of local amenities, including bespoke boutiques, cafes, bars, fine restaurants, and supermarkets.

Hutton Grove, North Finchley, London, N12 8DR

£3,250 pcm

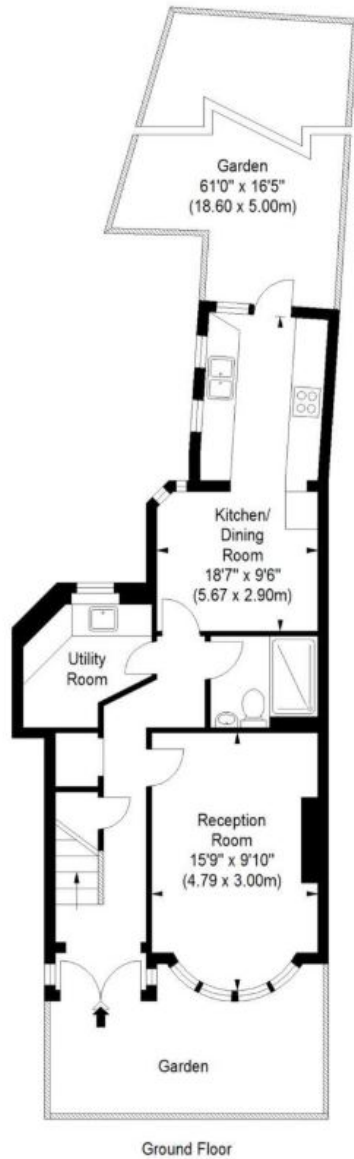
HOBARTS ESTATE AGENTS - LONDON (North)
8 CRESCENT ROAD
Alexandra Park
LONDON N22 7RS

rent@hobartsproperty.co.uk
www.hobartsproperty.co.uk
0208 348 3333

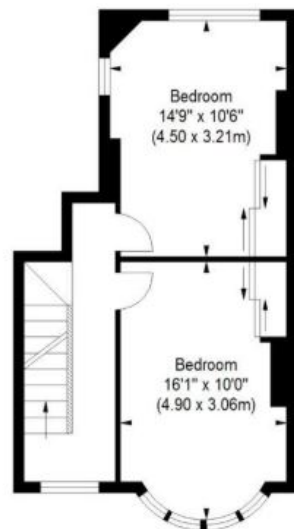


- Hutton Grove, North Finchley N12
- Separate Living Room
- Impressive Kitchen/Diner
- Two Modern Bath/Shower Rooms
- Excellent Local Amenities
- close to Highly Rated Schools

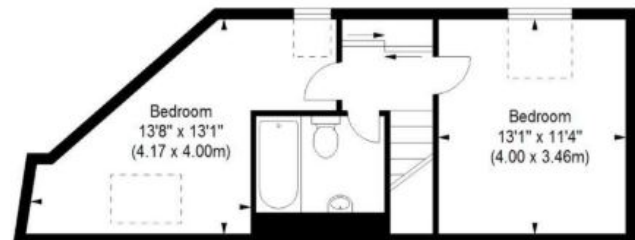
- Stunning Modern 4 Bedroom House
- Interior Designed
- Utility Room
- Generous Private Garden
- 25/30 Mins City/West End



Ground Floor



First Floor



Second Floor

ILLUSTRATION FOR IDENTIFICATION PURPOSES ONLY

Hutton Grove
Approximate Gross Internal Area
1342 sq ft / 124.72 sq m



Activate W
Go to Settings



Energy Efficiency Rating		
	Current	Potential
Very energy efficient - lower running costs		
(92+) A		
(81-91) B		85
(69-80) C		
(55-68) D		
(39-54) E	55	
(21-38) F		
(1-20) G		
Not energy efficient - higher running costs		
England, Scotland & Wales		
EU Directive 2002/91/EC		

Address: Hutton Grove, London N12

Viewings:

Strictly by appointment via
HOBARTS ESTATE AGENTS
0208 348 3333

Contact:

8 CRESCENT ROAD, Alexandra
Park, LONDON N22 7RS

rent@hobartsproperty.co.uk
www.hobartsproperty.co.uk

rightmove

PrimeLocation.com

homes24.co.uk

Zoopa.co.uk

propertyfinder.com



These property details, including measurements, floor plans and items depicted in photographs etc. are intended only as a brief guide to prospective purchasers and are not intended to be relied upon for any purpose whatsoever. Any interested party should satisfy themselves by inspection or otherwise as to the correctness of each statement contained in these details.